

Product datasheet for **TA349862S**

Cytochrome b5 (CYB5A) Rabbit Polyclonal Antibody

Product data:

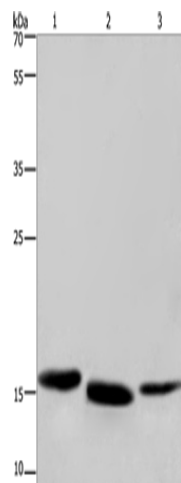
Product Type:	Primary Antibodies
Applications:	IHC, WB
Recommended Dilution:	WB: 200-1000 WB positive control: Human kidney cancer, mouse liver and human bladder carcinoma tissue IHC: 50-200 Positive control: Human thyroid cancer Predicted cell location: Cytoplasm
Reactivity:	Human, Mouse, Rat
Host:	Rabbit
Isotype:	IgG
Clonality:	Polyclonal
Immunogen:	Fusion protein of human CYB5A
Formulation:	pH7.4 PBS, 0.05% NaN ₃ , 40% Glycerol
Purification:	Antigen affinity purification
Conjugation:	Unconjugated
Storage:	Store at -20°C as received.
Stability:	Stable for 12 months from date of receipt.
Predicted Protein Size:	15 kDa
Gene Name:	cytochrome b5 type A
Database Link:	NP_683725 Entrez Gene 64001 Rat Entrez Gene 109672 Mouse Entrez Gene 1528 Human P00167
Background:	The protein encoded by this gene is a membrane-bound cytochrome that reduces ferric hemoglobin (methemoglobin) to ferrous hemoglobin, which is required for stearyl-CoA-desaturase activity. Defects in this gene are a cause of type IV hereditary methemoglobinemia. Three transcript variants encoding different isoforms have been found for this gene.
Synonyms:	CYB5; MCB5



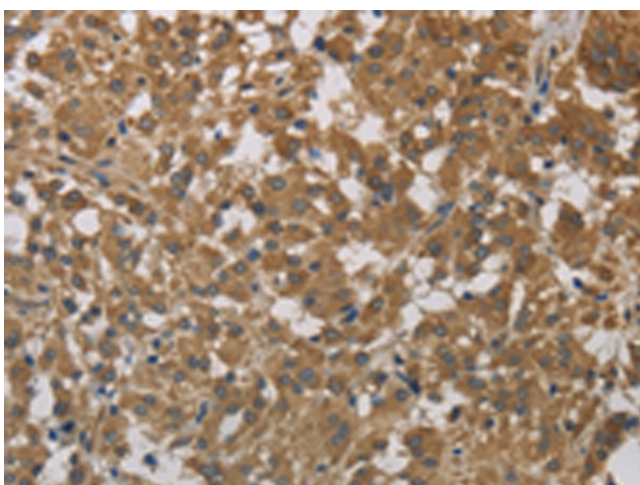
[View online »](#)

Protein Families: Transmembrane

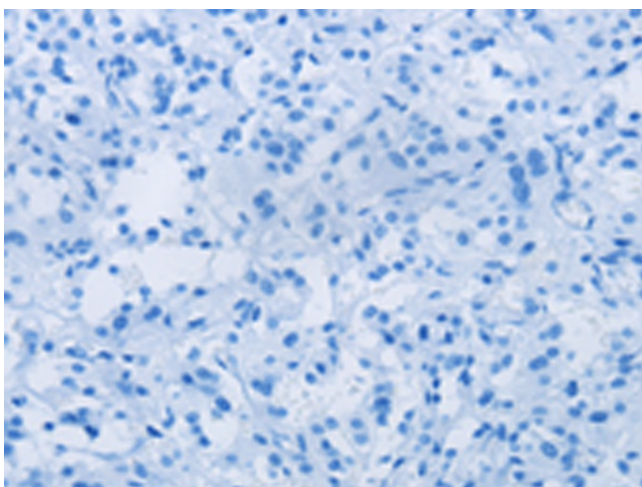
Product images:



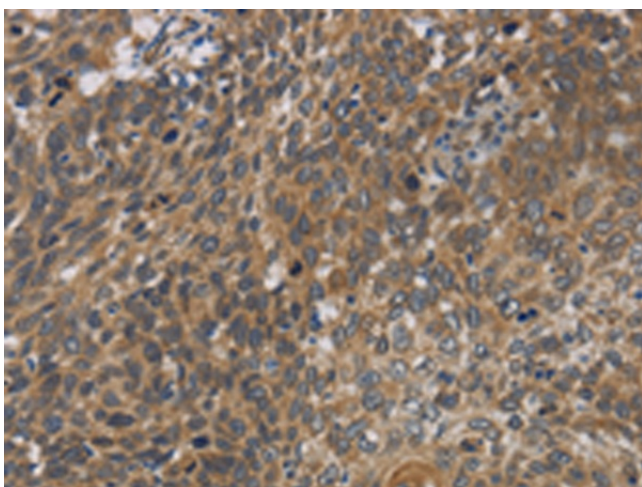
Gel: 10%SDS-PAGE
Lysate: 40 μ g
Lane 1-3: Human kidney cancer tissue
mouse liver tissue
human bladder carcinoma tissue
Primary antibody: [TA349862] (CYB5A Antibody)
at dilution 1/300
Secondary antibody: Goat anti rabbit IgG at
1/8000 dilution
Exposure time: 1 minute



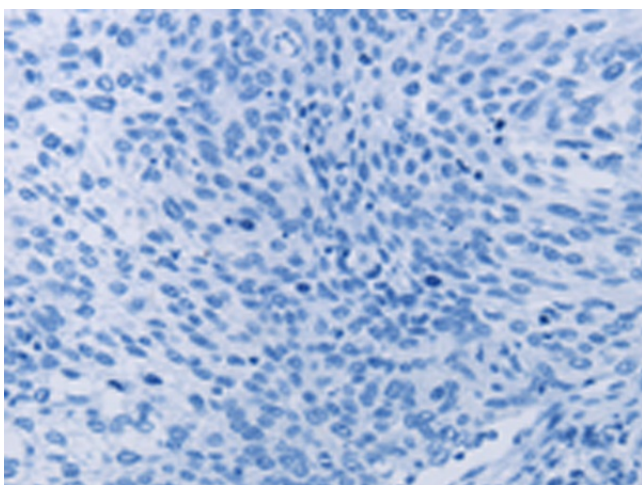
Immunohistochemistry of paraffin-embedded
Human thyroid cancer tissue using [TA349862]
(CYB5A Antibody) at dilution 1/40 (Original
magnification: \times 200)



Immunohistochemistry of paraffin-embedded Human thyroid cancer tissue using [TA349862] (CYB5A Antibody) at dilution 1/40, treated with fusion protein. (Original magnification: $\times 200$)



Immunohistochemistry of paraffin-embedded Human cervical cancer tissue using [TA349862] (CYB5A Antibody) at dilution 1/40 (Original magnification: $\times 200$)



Immunohistochemistry of paraffin-embedded Human cervical cancer tissue using [TA349862] (CYB5A Antibody) at dilution 1/40, treated with fusion protein. (Original magnification: $\times 200$)