

## Product datasheet for **TA349857**

### Cytochrome P450 4A (CYP4A11) Rabbit Polyclonal Antibody

#### Product data:

Product Type:	Primary Antibodies
Applications:	IHC, WB
Recommended Dilution:	WB: 500-2000 WB positive control: A431 cell lysate IHC: 50-200 Positive control: Human liver cancer Predicted cell location: Cytoplasm
Reactivity:	Human
Host:	Rabbit
Isotype:	IgG
Clonality:	Polyclonal
Immunogen:	Fusion protein of human CYP4A11
Formulation:	pH7.4 PBS, 0.05% NaN <sub>3</sub> , 40% Glycerol
Concentration:	lot specific
Purification:	Antigen affinity purification
Conjugation:	Unconjugated
Storage:	Store at -20°C as received.
Stability:	Stable for 12 months from date of receipt.
Predicted Protein Size:	59 kDa
Gene Name:	cytochrome P450 family 4 subfamily A member 11
Database Link:	<a href="#">NP_000769</a> <a href="#">Entrez Gene 1579 Human</a> <a href="#">Q02928</a>

**Background:** This gene encodes a member of the cytochrome P450 superfamily of enzymes. The cytochrome P450 proteins are monooxygenases which catalyze many reactions involved in drug metabolism and synthesis of cholesterol, steroids and other lipids. This protein localizes to the endoplasmic reticulum and hydroxylates medium-chain fatty acids such as laurate and myristate.



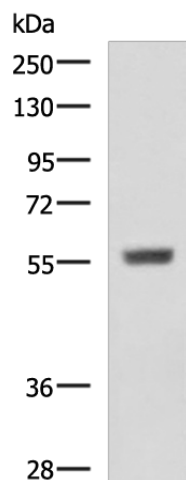
[View online »](#)

**Synonyms:** CP4Y; CYP4A2; CYP4A11

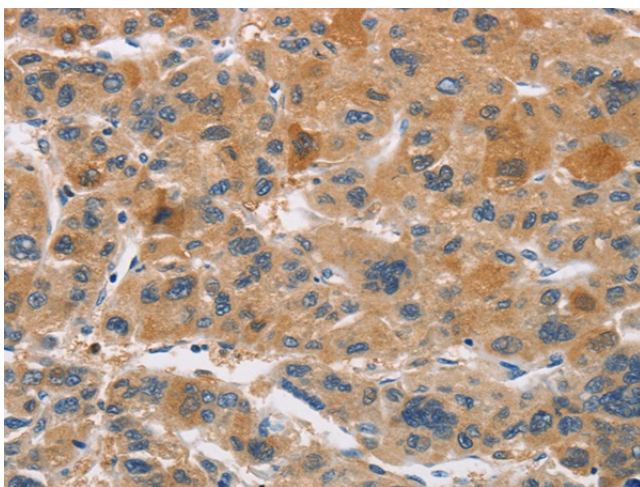
**Protein Families:** Druggable Genome, P450, Transmembrane

**Protein Pathways:** Arachidonic acid metabolism, Fatty acid metabolism, Metabolic pathways, PPAR signaling pathway, Retinol metabolism, Vascular smooth muscle contraction

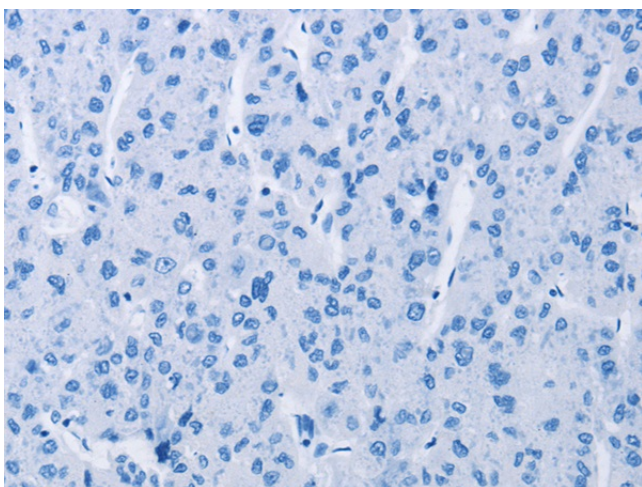
### Product images:



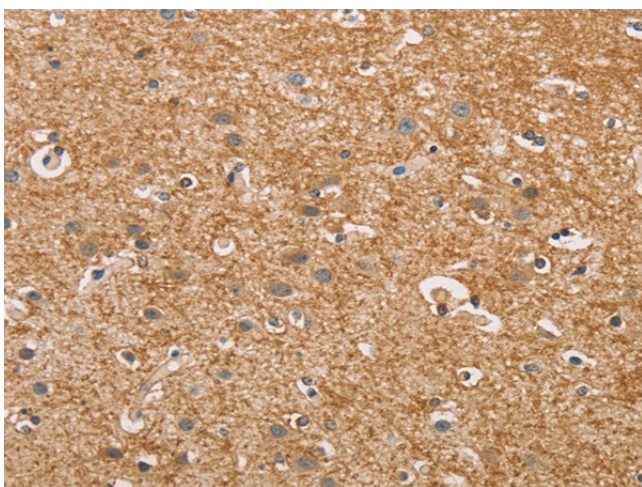
Gel: 8%SDS-PAGE  
Lysate: 40 µg  
Lane: A431 cell lysate  
Primary antibody: TA349857 (CYP4A11 Antibody) at dilution 1/400  
Secondary antibody: Goat anti rabbit IgG at 1/5000 dilution  
Exposure time: 1 minute



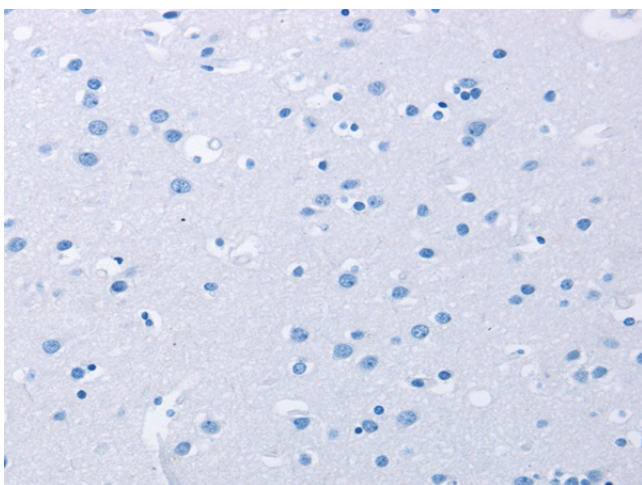
Immunohistochemistry of paraffin-embedded Human liver cancer tissue using TA349857 (CYP4A11 Antibody) at dilution 1/30 (Original magnification: ×200)



Immunohistochemistry of paraffin-embedded Human liver cancer tissue using TA349857 (CYP4A11 Antibody) at dilution 1/30, treated with fusion protein. (Original magnification: ×200)



Immunohistochemistry of paraffin-embedded Human brain tissue using TA349857 (CYP4A11 Antibody) at dilution 1/30 (Original magnification: ×200)



Immunohistochemistry of paraffin-embedded Human brain tissue using TA349857 (CYP4A11 Antibody) at dilution 1/30, treated with fusion protein. (Original magnification: ×200)