

## Product datasheet for **TA349852S**

### Cytochrome P450 17A1 (CYP17A1) Rabbit Polyclonal Antibody

#### Product data:

|                       |   |
|-----------------------|---|
| Product Type:         | Primary Antibodies  |
| Applications:         | IHC   |
| Recommended Dilution: | IHC: 50-200<br>Positive control: Human liver cancer<br>Predicted cell location: Cytoplasm     |
| Reactivity:           | Human   |
| Host:                 | Rabbit  |
| Isotype:              | IgG   |
| Clonality:            | Polyclonal  |
| Immunogen:            | Fusion protein of human CYP17A1   |
| Formulation:          | pH7.4 PBS, 0.05% NaN <sub>3</sub> , 40% Glycerol  |
| Purification:         | Antigen affinity purification   |
| Conjugation:          | Unconjugated  |
| Storage:              | Store at -20°C as received.   |
| Stability:            | Stable for 12 months from date of receipt.  |
| Gene Name:            | cytochrome P450 family 17 subfamily A member 1  |
| Database Link:        | <a href="#">NP_000093</a><br><a href="#">Entrez Gene 1586 Human</a><br><a href="#">P05093</a> |

**Background:** This gene encodes a member of the cytochrome P450 superfamily of enzymes. The cytochrome P450 proteins are monooxygenases which catalyze many reactions involved in drug metabolism and synthesis of cholesterol, steroids and other lipids. This protein localizes to the endoplasmic reticulum. It has both 17 $\alpha$ -hydroxylase and 17,20-lyase activities and is a key enzyme in the steroidogenic pathway that produces progestins, mineralocorticoids, glucocorticoids, androgens, and estrogens. Mutations in this gene are associated with isolated steroid-17  $\alpha$ -hydroxylase deficiency, 17- $\alpha$ -hydroxylase/17,20-lyase deficiency, pseudohermaphroditism, and adrenal hyperplasia.

**Synonyms:** CPT7; CYP17; P450C17; S17AH

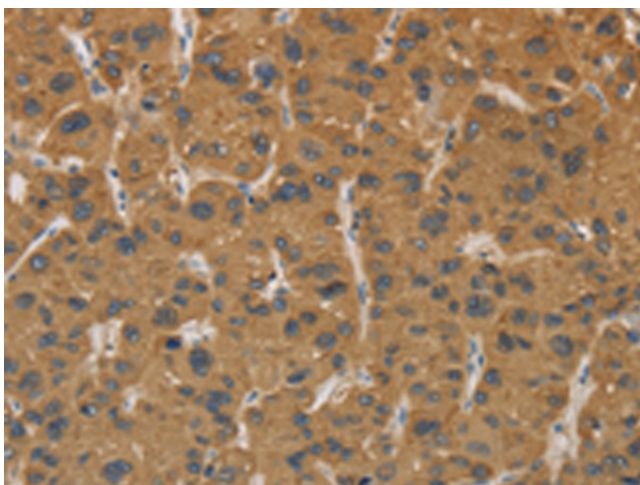


[View online »](#)

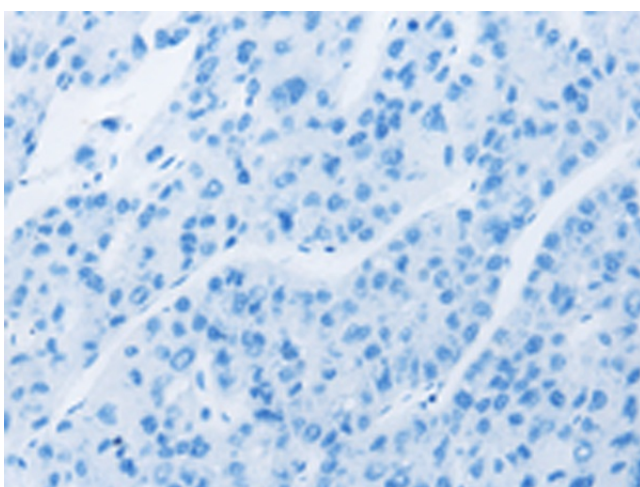
Protein Families: Druggable Genome, P450

Protein Pathways: C21-Steroid hormone metabolism, Metabolic pathways

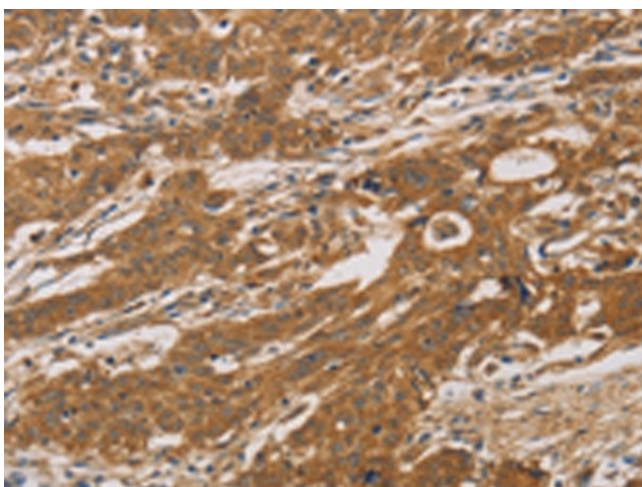
### Product images:



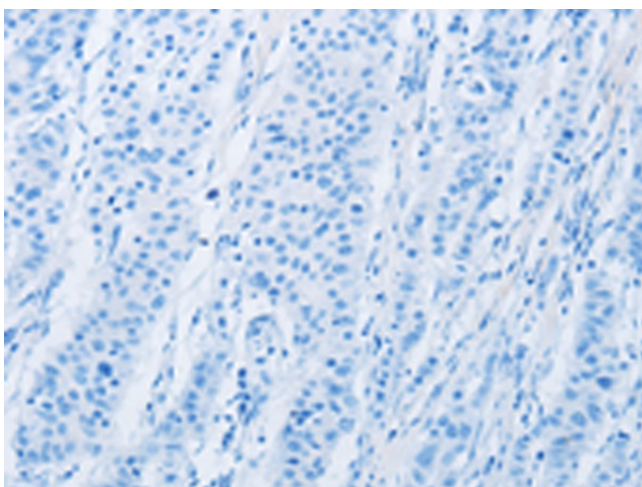
Immunohistochemistry of paraffin-embedded Human liver cancer tissue using [TA349852] (CYP17A1 Antibody) at dilution 1/30 (Original magnification:  $\times 200$ )



Immunohistochemistry of paraffin-embedded Human liver cancer tissue using [TA349852] (CYP17A1 Antibody) at dilution 1/30, treated with fusion protein. (Original magnification:  $\times 200$ )



Immunohistochemistry of paraffin-embedded Human gastric cancer tissue using [TA349852] (CYP17A1 Antibody) at dilution 1/30 (Original magnification:  $\times 200$ )



Immunohistochemistry of paraffin-embedded Human gastric cancer tissue using [TA349852] (CYP17A1 Antibody) at dilution 1/30, treated with fusion protein. (Original magnification:  $\times 200$ )