

## Product datasheet for **TA349850S**

### CYP11A1 Rabbit Polyclonal Antibody

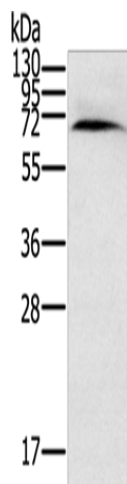
#### Product data:

Product Type:	Primary Antibodies
Applications:	WB
Recommended Dilution:	WB: 200-1000 WB positive control: Human normal kidney tissue
Reactivity:	Human
Host:	Rabbit
Isotype:	IgG
Clonality:	Polyclonal
Immunogen:	Fusion protein of human CYP11A1
Formulation:	pH7.4 PBS, 0.05% NaN <sub>3</sub> , 40% Glycerol
Purification:	Antigen affinity purification
Conjugation:	Unconjugated
Storage:	Store at -20°C as received.
Stability:	Stable for 12 months from date of receipt.
Predicted Protein Size:	60 kDa
Gene Name:	cytochrome P450 family 11 subfamily A member 1
Database Link:	<a href="#">NP_001093243</a> <a href="#">Entrez Gene 1583 Human P05108</a>
Background:	This gene encodes a member of the cytochrome P450 superfamily of enzymes. The cytochrome P450 proteins are monooxygenases which catalyze many reactions involved in drug metabolism and synthesis of cholesterol, steroids and other lipids. This protein localizes to the mitochondrial inner membrane and catalyzes the conversion of cholesterol to pregnenolone, the first and rate-limiting step in the synthesis of the steroid hormones.
Synonyms:	CYP11A; CYPXIA1; P450SCC
Protein Families:	Druggable Genome, P450
Protein Pathways:	C21-Steroid hormone metabolism, Metabolic pathways



[View online »](#)

## Product images:



Gel: 8%SDS-PAGE  
Lysate: 40  $\mu$ g  
Lane: Human normal kidney tissue  
Primary antibody: [TA349850] (CYP11A1 Antibody) at dilution 1/200  
Secondary antibody: Goat anti rabbit IgG at 1/8000 dilution  
Exposure time: 5 minutes