

## Product datasheet for **TA349848**

### CYP27A1 Rabbit Polyclonal Antibody

#### Product data:

Product Type:	Primary Antibodies
Applications:	IHC, WB
Recommended Dilution:	WB: 200-1000 WB positive control: Mouse liver and human fetal liver tissue IHC: 25-100 Positive control: Human liver cancer Predicted cell location: Cytoplasm
Reactivity:	Human, Mouse
Host:	Rabbit
Isotype:	IgG
Clonality:	Polyclonal
Immunogen:	Fusion protein of human CYP27A1
Formulation:	pH7.4 PBS, 0.05% NaN <sub>3</sub> , 40% Glycerol
Concentration:	lot specific
Purification:	Antigen affinity purification
Conjugation:	Unconjugated
Storage:	Store at -20°C as received.
Stability:	Stable for 12 months from date of receipt.
Predicted Protein Size:	60 kDa
Gene Name:	cytochrome P450 family 27 subfamily A member 1
Database Link:	<a href="#">NP_000775</a> <a href="#">Entrez Gene 104086 Mouse</a> <a href="#">Entrez Gene 1593 Human</a> <a href="#">Q02318</a>



[View online »](#)

**Background:**

This gene encodes a member of the cytochrome P450 superfamily of enzymes. The cytochrome P450 proteins are monooxygenases which catalyze many reactions involved in drug metabolism and synthesis of cholesterol, steroids and other lipids. This mitochondrial protein oxidizes cholesterol intermediates as part of the bile synthesis pathway. Since the conversion of cholesterol to bile acids is the major route for removing cholesterol from the body, this protein is important for overall cholesterol homeostasis. Mutations in this gene cause cerebrotendinous xanthomatosis, a rare autosomal recessive lipid storage disease.

**Synonyms:**

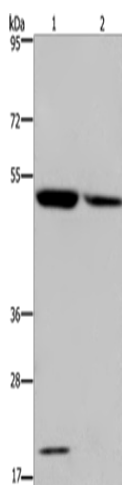
CP27; CTX; CYP27

**Protein Families:**

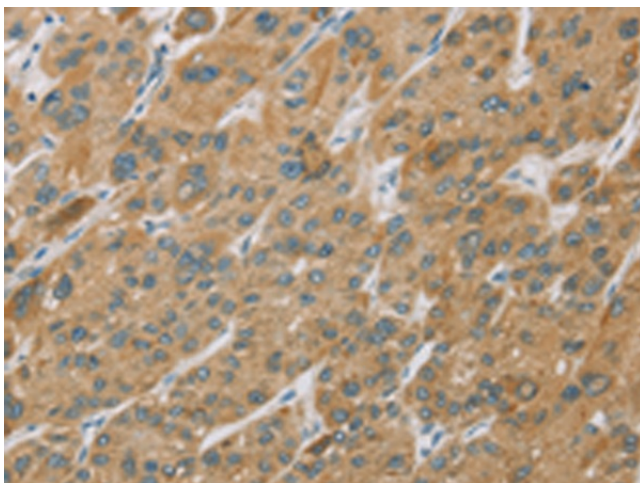
Druggable Genome, P450

**Protein Pathways:**

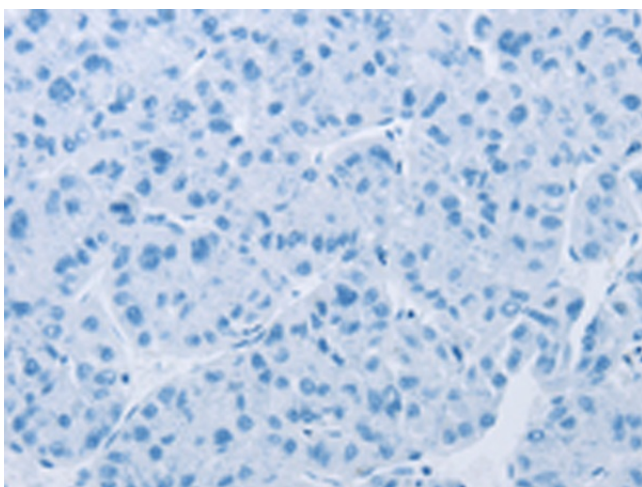
Metabolic pathways, PPAR signaling pathway, Primary bile acid biosynthesis

**Product images:**

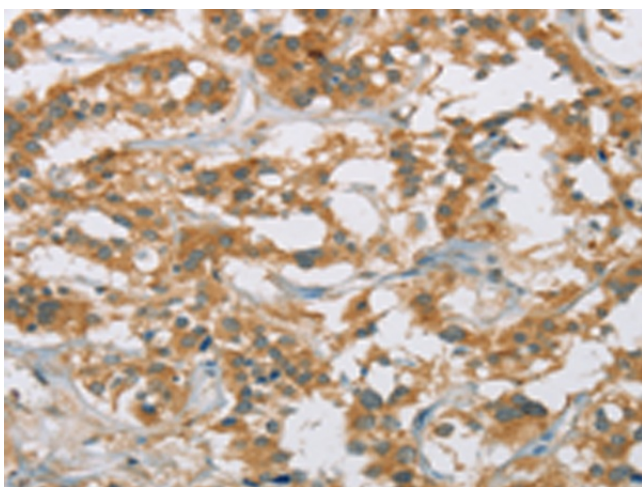
Gel: 6%SDS-PAGE  
Lysate: 40 µg  
Lane 1-2: Mouse liver tissue  
human fetal liver tissue  
Primary antibody: TA349848 (CYP27A1 Antibody)  
at dilution 1/200  
Secondary antibody: Goat anti rabbit IgG at  
1/8000 dilution  
Exposure time: 7 minutes



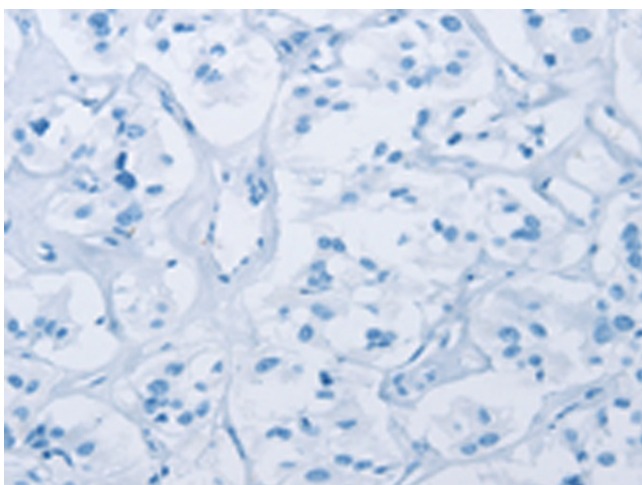
Immunohistochemistry of paraffin-embedded  
Human liver cancer tissue using TA349848  
(CYP27A1 Antibody) at dilution 1/25 (Original  
magnification: ×200)



Immunohistochemistry of paraffin-embedded Human liver cancer tissue using TA349848 (CYP27A1 Antibody) at dilution 1/25, treated with fusion protein. (Original magnification: ×200)



Immunohistochemistry of paraffin-embedded Human thyroid cancer tissue using TA349848 (CYP27A1 Antibody) at dilution 1/25 (Original magnification: ×200)



Immunohistochemistry of paraffin-embedded Human thyroid cancer tissue using TA349848 (CYP27A1 Antibody) at dilution 1/25, treated with fusion protein. (Original magnification: ×200)