

## Product datasheet for **TA349845**

### Cytochrome P450 2E1 (CYP2E1) Rabbit Polyclonal Antibody

#### Product data:

|                         |   |
|-------------------------|---|
| Product Type:           | Primary Antibodies  |
| Applications:           | IHC, WB   |
| Recommended Dilution:   | WB: 500-2000<br>WB positive control: Mouse liver tissue<br>IHC: 25-100<br>Positive control: Human thyroid cancer<br>Predicted cell location: Cytoplasm                      |
| Reactivity:             | Human, Mouse, Rat   |
| Host:                   | Rabbit  |
| Isotype:                | IgG   |
| Clonality:              | Polyclonal  |
| Immunogen:              | Fusion protein of human CYP2E1  |
| Formulation:            | pH7.4 PBS, 0.05% NaN <sub>3</sub> , 40% Glycerol  |
| Concentration:          | lot specific  |
| Purification:           | Antigen affinity purification   |
| Conjugation:            | Unconjugated  |
| Storage:                | Store at -20°C as received.   |
| Stability:              | Stable for 12 months from date of receipt.  |
| Predicted Protein Size: | 57 kDa  |
| Gene Name:              | cytochrome P450 family 2 subfamily E member 1   |
| Database Link:          | <a href="#">NP_000764</a><br><a href="#">Entrez Gene 13106 Mouse</a> <a href="#">Entrez Gene 25086 Rat</a> <a href="#">Entrez Gene 1571 Human</a><br><a href="#">P05181</a> |



[View online »](#)

**Background:**

This gene encodes a member of the cytochrome P450 superfamily of enzymes. The cytochrome P450 proteins are monooxygenases which catalyze many reactions involved in drug metabolism and synthesis of cholesterol, steroids and other lipids. This protein localizes to the endoplasmic reticulum and is induced by ethanol, the diabetic state, and starvation. The enzyme metabolizes both endogenous substrates, such as ethanol, acetone, and acetal, as well as exogenous substrates including benzene, carbon tetrachloride, ethylene glycol, and nitrosamines which are premutagens found in cigarette smoke. Due to its many substrates, this enzyme may be involved in such varied processes as gluconeogenesis, hepatic cirrhosis, diabetes, and cancer.

**Synonyms:**

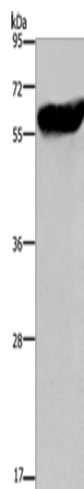
CPE1; CYP2E; P450-J; P450C2E

**Protein Families:**

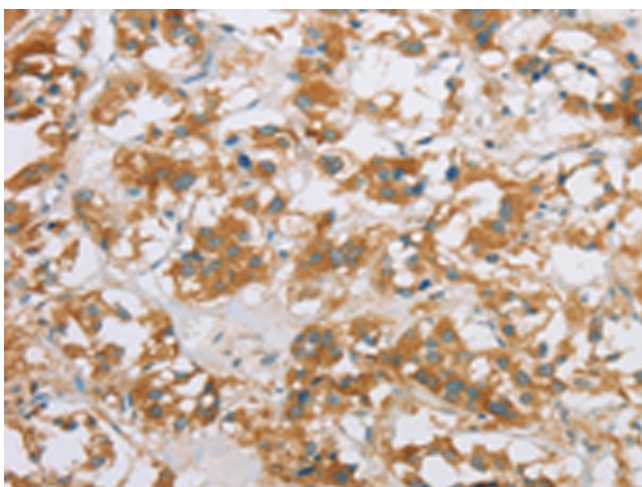
Druggable Genome, P450, Transmembrane

**Protein Pathways:**

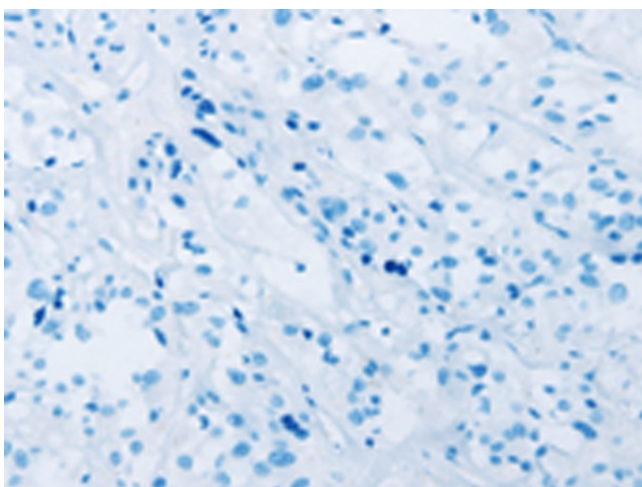
Arachidonic acid metabolism, Drug metabolism - cytochrome P450, Linoleic acid metabolism, Metabolic pathways, Metabolism of xenobiotics by cytochrome P450

**Product images:**

Gel: 8%SDS-PAGE  
Lysate: 40 µg  
Lane: Mouse liver tissue  
Primary antibody: TA349845 (CYP2E1 Antibody) at dilution 1/300  
Secondary antibody: Goat anti rabbit IgG at 1/8000 dilution  
Exposure time: 20 seconds



Immunohistochemistry of paraffin-embedded Human thyroid cancer tissue using TA349845 (CYP2E1 Antibody) at dilution 1/35 (Original magnification:  $\times 200$ )



Immunohistochemistry of paraffin-embedded Human thyroid cancer tissue using TA349845 (CYP2E1 Antibody) at dilution 1/35, treated with fusion protein. (Original magnification:  $\times 200$ )