

## Product datasheet for **TA349843S**

### CYFIP2 Rabbit Polyclonal Antibody

#### Product data:

Product Type:	Primary Antibodies
Applications:	IHC, WB
Recommended Dilution:	WB: 500-2000 WB positive control: Mouse brain and human fetal brain tissue IHC: 50-200 Positive control: Human liver cancer Predicted cell location: Cytoplasm
Reactivity:	Human, Mouse
Host:	Rabbit
Isotype:	IgG
Clonality:	Polyclonal
Immunogen:	Fusion protein of human CYFIP2
Formulation:	pH7.4 PBS, 0.05% NaN <sub>3</sub> , 40% Glycerol
Purification:	Antigen affinity purification
Conjugation:	Unconjugated
Storage:	Store at -20°C as received.
Stability:	Stable for 12 months from date of receipt.
Predicted Protein Size:	148 kDa
Gene Name:	cytoplasmic FMR1 interacting protein 2
Database Link:	<a href="#">NP_055191</a> <a href="#">Entrez Gene 76884 Mouse</a> <a href="#">Entrez Gene 26999 Human</a> <a href="#">Q96F07</a>



[View online »](#)

**Background:**

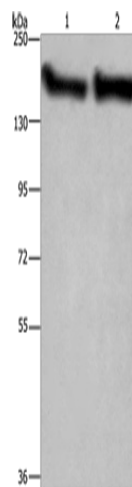
CYFIP2 (Cytoplasmic FMR1-interacting protein 2, p53-inducible protein 121) is a 1,278 amino acid protein encoded by the human gene CYFIP2. CYFIP2 belongs to the CYFIP family and is involved in T-cell adhesion and p53-dependent induction of apoptosis. It interacts with FMR1, FXR1 and FXR2 and is a component of the WAVE1 complex composed of Abi-2, CYFIP2, C3orf10/HSPC300, NAP125 and WASF1/WAVE1. Upon binding to activated Rac 1, CYFIP2 causes the complex to dissociate, releasing activated WASF1. The CYFIP2 promoter contains a p53-responsive element that confers p53 binding as well as transcriptional activation of a heterologous reporter. Induced expression of CYFIP2 is sufficient for caspase activation and cellular apoptosis, reminiscent of p53 activation.

**Synonyms:**

PIR121

**Protein Pathways:**

Regulation of actin cytoskeleton

**Product images:**


Gel: 6%SDS-PAGE

Lysate: 40 µg

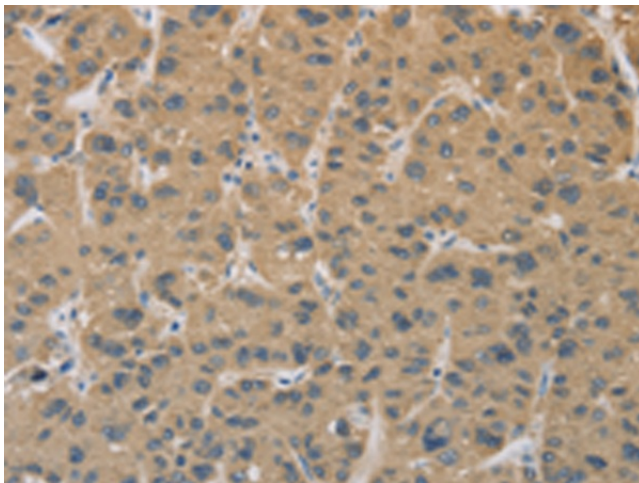
Lane 1-2: Mouse brain tissue

human fetal brain tissue

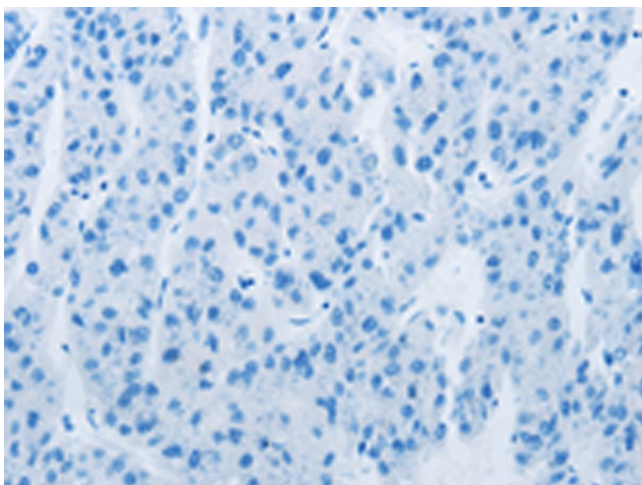
Primary antibody: [TA349843] (CYFIP2 Antibody)  
at dilution 1/300

Secondary antibody: Goat anti rabbit IgG at  
1/8000 dilution

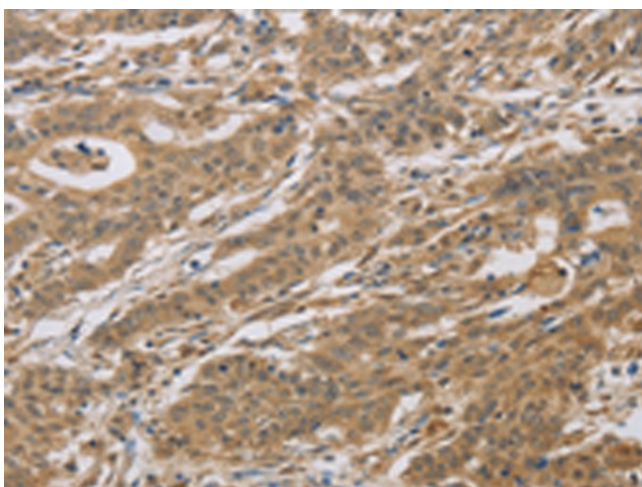
Exposure time: 2 minutes



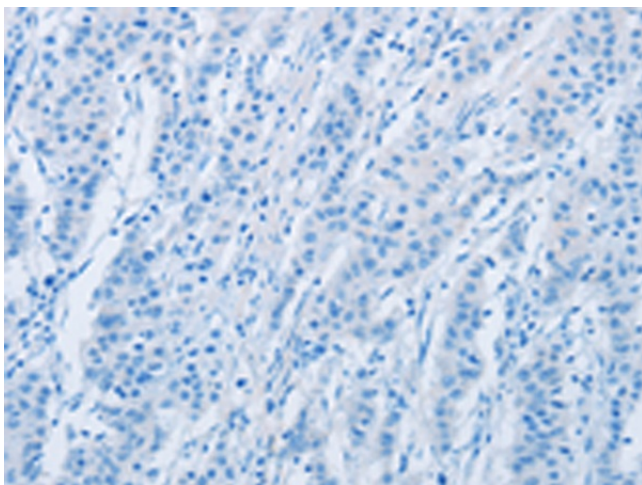
Immunohistochemistry of paraffin-embedded  
Human liver cancer tissue using [TA349843]  
(CYFIP2 Antibody) at dilution 1/25 (Original  
magnification: ×200)



Immunohistochemistry of paraffin-embedded Human liver cancer tissue using [TA349843] (CYFIP2 Antibody) at dilution 1/25, treated with fusion protein. (Original magnification:  $\times 200$ )



Immunohistochemistry of paraffin-embedded Human gastric cancer tissue using [TA349843] (CYFIP2 Antibody) at dilution 1/25 (Original magnification:  $\times 200$ )



Immunohistochemistry of paraffin-embedded Human gastric cancer tissue using [TA349843] (CYFIP2 Antibody) at dilution 1/25, treated with fusion protein. (Original magnification:  $\times 200$ )