

## Product datasheet for **TA349842S**

### Cyclophilin F (PPIF) Rabbit Polyclonal Antibody

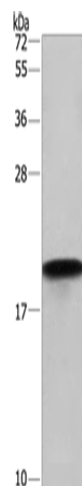
#### Product data:

|                         |   |
|-------------------------|---|
| Product Type:           | Primary Antibodies  |
| Applications:           | IHC, WB   |
| Recommended Dilution:   | WB: 500-2000<br>WB positive control: Hela cells<br>IHC: 100-300<br>Positive control: Human breast cancer<br>Predicted cell location: Cytoplasm  |
| Reactivity:             | Human, Mouse, Rat   |
| Host:                   | Rabbit  |
| Isotype:                | IgG   |
| Clonality:              | Polyclonal  |
| Immunogen:              | Fusion protein of human PPIF  |
| Formulation:            | pH7.4 PBS, 0.05% NaN <sub>3</sub> , 40% Glycerol  |
| Purification:           | Antigen affinity purification   |
| Conjugation:            | Unconjugated  |
| Storage:                | Store at -20°C as received.   |
| Stability:              | Stable for 12 months from date of receipt.  |
| Predicted Protein Size: | 22 kDa  |
| Gene Name:              | peptidylprolyl isomerase F  |
| Database Link:          | <a href="#">NP_005720</a><br><a href="#">Entrez Gene 105675</a> <a href="#">MouseEntrez Gene 282819</a> <a href="#">RatEntrez Gene 10105</a> <a href="#">Human P30405</a>   |
| Background:             | The protein encoded by this gene is a member of the peptidyl-prolyl cis-trans isomerase (PPIase) family. PPIases catalyze the cis-trans isomerization of proline imidic peptide bonds in oligopeptides and accelerate the folding of proteins. This protein is part of the mitochondrial permeability transition pore in the inner mitochondrial membrane. Activation of this pore is thought to be involved in the induction of apoptotic and necrotic cell death. |
| Synonyms:               | Cyp-D; CyP-M; CYP3; CypD  |

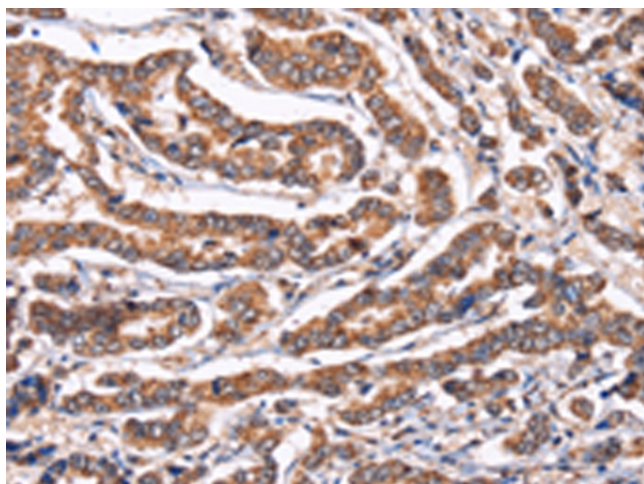


[View online »](#)

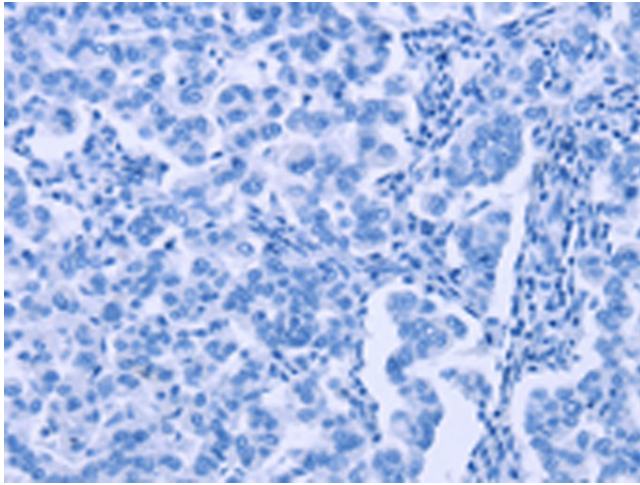
## Product images:



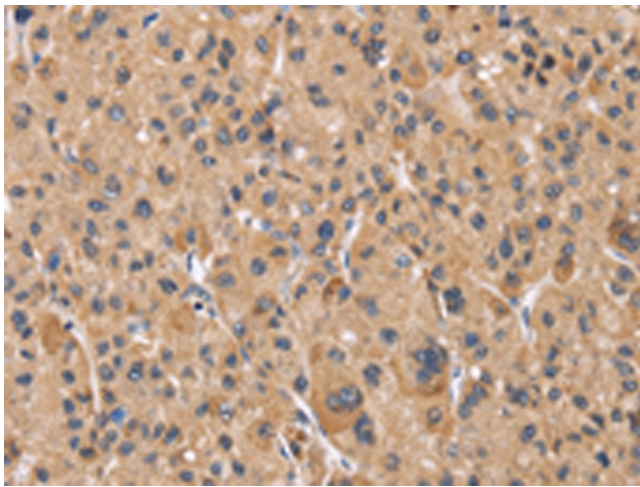
Gel: 10%SDS-PAGE  
Lysate: 40  $\mu$ g  
Lane: HeLa cells  
Primary antibody: [TA349842] (PPIF Antibody) at dilution 1/675  
Secondary antibody: Goat anti rabbit IgG at 1/8000 dilution  
Exposure time: 30 seconds



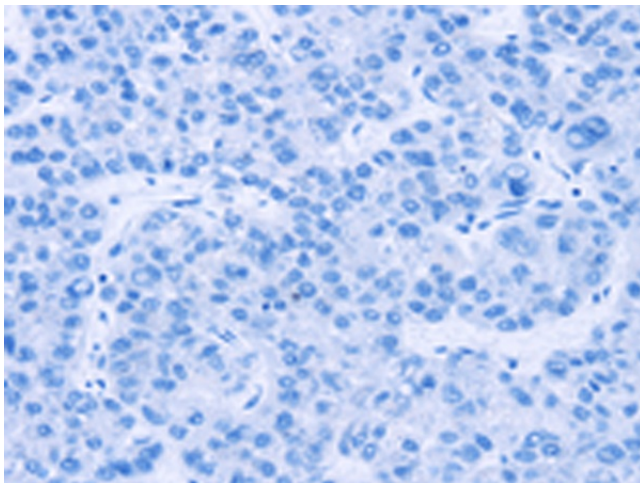
Immunohistochemistry of paraffin-embedded Human breast cancer tissue using [TA349842] (PPIF Antibody) at dilution 1/60 (Original magnification:  $\times$ 200)



Immunohistochemistry of paraffin-embedded Human breast cancer tissue using [TA349842] (PPIF Antibody) at dilution 1/60, treated with fusion protein. (Original magnification:  $\times 200$ )



Immunohistochemistry of paraffin-embedded Human liver cancer tissue using [TA349842] (PPIF Antibody) at dilution 1/60 (Original magnification:  $\times 200$ )



Immunohistochemistry of paraffin-embedded Human liver cancer tissue using [TA349842] (PPIF Antibody) at dilution 1/60, treated with fusion protein. (Original magnification:  $\times 200$ )