

## Product datasheet for **TA349841**

### Cyclophilin B (PPIB) Rabbit Polyclonal Antibody

#### Product data:

Product Type:	Primary Antibodies
Applications:	IHC, WB
Recommended Dilution:	WB: 500-2000 WB positive control: Human fetal liver tissue and 293T cells, human liver cancer tissue and hela cells IHC: 50-200 Positive control: Human ovarian cancer Predicted cell location: Cytoplasm
Reactivity:	Human, Mouse, Rat
Host:	Rabbit
Isotype:	IgG
Clonality:	Polyclonal
Immunogen:	Fusion protein of human PPIB
Formulation:	pH7.4 PBS, 0.05% NaN <sub>3</sub> , 40% Glycerol
Concentration:	lot specific
Purification:	Antigen affinity purification
Conjugation:	Unconjugated
Storage:	Store at -20°C as received.
Stability:	Stable for 12 months from date of receipt.
Predicted Protein Size:	24 kDa
Gene Name:	peptidylprolyl isomerase B
Database Link:	<a href="#">NP_000933</a> <a href="#">Entrez Gene 19035 Mouse</a> <a href="#">Entrez Gene 64367 Rat</a> <a href="#">Entrez Gene 5479 Human</a> <a href="#">P23284</a>



[View online »](#)

**Background:**

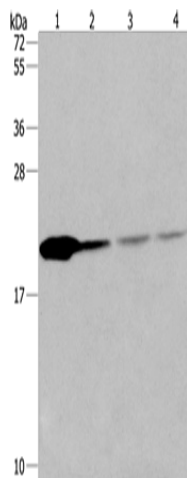
The protein encoded by this gene is a cyclosporine-binding protein and is mainly located within the endoplasmic reticulum. It is associated with the secretory pathway and released in biological fluids. This protein can bind to cells derived from T- and B-lymphocytes, and may regulate cyclosporine A-mediated immunosuppression. Variants have been identified in this protein that give rise to recessive forms of osteogenesis imperfecta.

**Synonyms:**

CYP-S1; CYPB; HEL-S-39; OI9; SCYLP

**Protein Families:**

Druggable Genome, Transmembrane

**Product images:**


Gel: 10%SDS-PAGE

Lysate: 40 µg

Lane 1-4: Human fetal liver tissue

293T cells

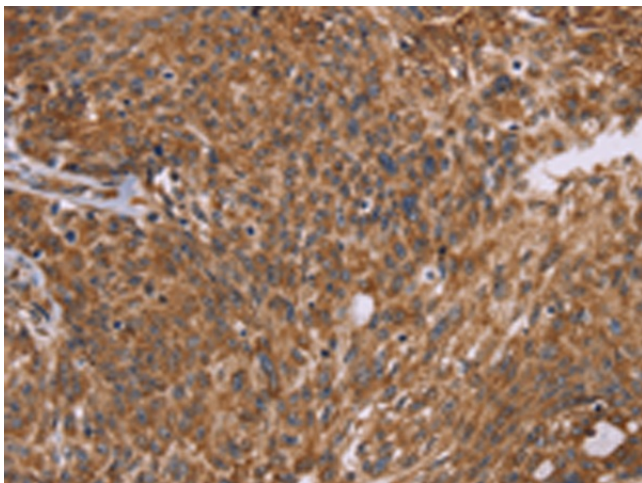
human liver cancer tissue

hela cells

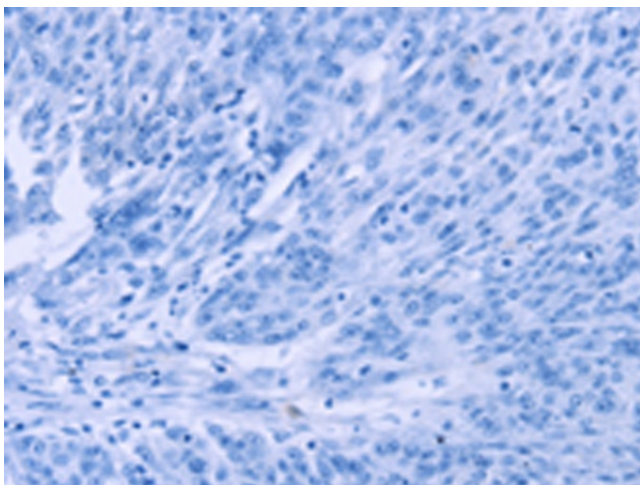
Primary antibody: TA349841 (PPIB Antibody) at dilution 1/500

Secondary antibody: Goat anti rabbit IgG at 1/8000 dilution

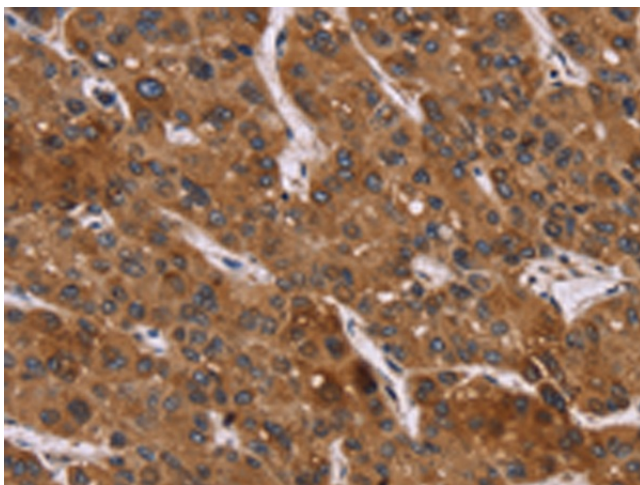
Exposure time: 10 seconds



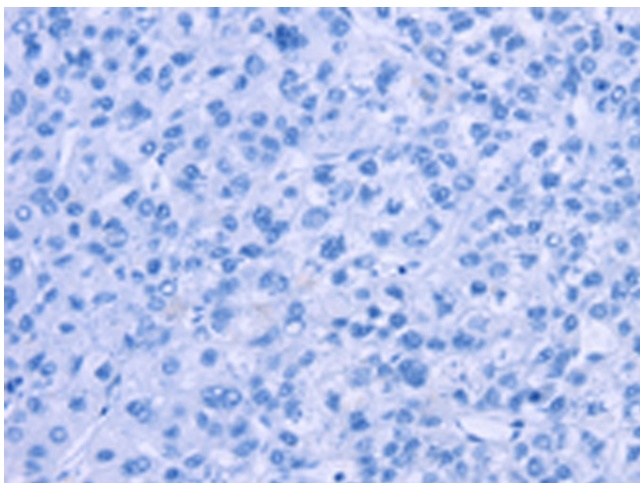
Immunohistochemistry of paraffin-embedded Human ovarian cancer tissue using TA349841 (PPIB Antibody) at dilution 1/45 (Original magnification: ×200)



Immunohistochemistry of paraffin-embedded Human ovarian cancer tissue using TA349841 (PPIB Antibody) at dilution 1/45, treated with fusion protein. (Original magnification:  $\times 200$ )



Immunohistochemistry of paraffin-embedded Human liver cancer tissue using TA349841 (PPIB Antibody) at dilution 1/45 (Original magnification:  $\times 200$ )



Immunohistochemistry of paraffin-embedded Human liver cancer tissue using TA349841 (PPIB Antibody) at dilution 1/45, treated with fusion protein. (Original magnification:  $\times 200$ )