

## Product datasheet for **TA349840**

### CXXC5 Rabbit Polyclonal Antibody

#### Product data:

Product Type:	Primary Antibodies
Applications:	IHC, WB
Recommended Dilution:	WB: 1000-5000 WB positive control: 231 cell lysate IHC: 150-300 Positive control: Human liver cancer Predicted cell location: Cytoplasm
Reactivity:	Human, Mouse, Rat
Host:	Rabbit
Isotype:	IgG
Clonality:	Polyclonal
Immunogen:	Fusion protein of human CXXC5
Formulation:	pH7.4 PBS, 0.05% NaN <sub>3</sub> , 40% Glycerol
Concentration:	lot specific
Purification:	Antigen affinity purification
Conjugation:	Unconjugated
Storage:	Store at -20°C as received.
Stability:	Stable for 12 months from date of receipt.
Predicted Protein Size:	33 kDa
Gene Name:	CXXC finger protein 5
Database Link:	<a href="#">NP_057547</a> <a href="#">Entrez Gene 67393 Mouse</a> <a href="#">Entrez Gene 291670 Rat</a> <a href="#">Entrez Gene 51523 Human</a> <a href="#">Q7LFL8</a>

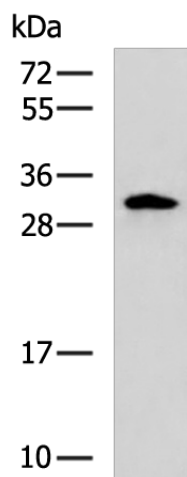
**Background:** CXXC5 (CXXC finger 5), also known as RINF or HSPC195, is a 322 amino acid protein that localizes to both the nucleus and the cytoplasm and contains one CXXC-type zinc finger. Interacting with Dvl-1, CXXC5 acts as a mediator of Wnt signaling in neural stem cells and is thought to participate in the activation of MAP kinase pathways. The gene encoding CXXC5 maps to human chromosome 5 and is expressed as multiple alternatively spliced isoforms.



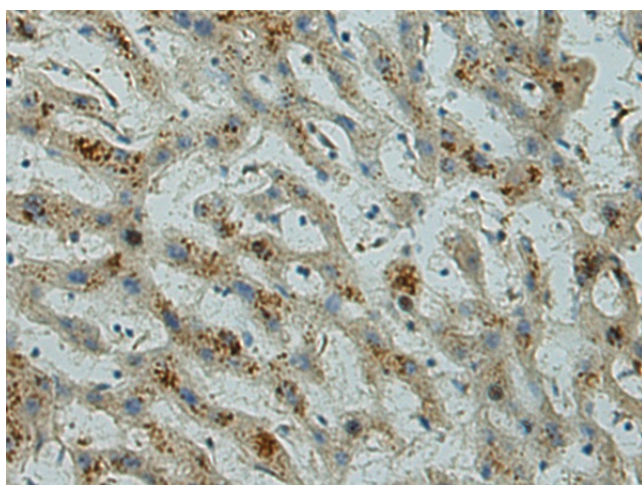
[View online »](#)

Synonyms: CF5; HSPC195; RINF; WID

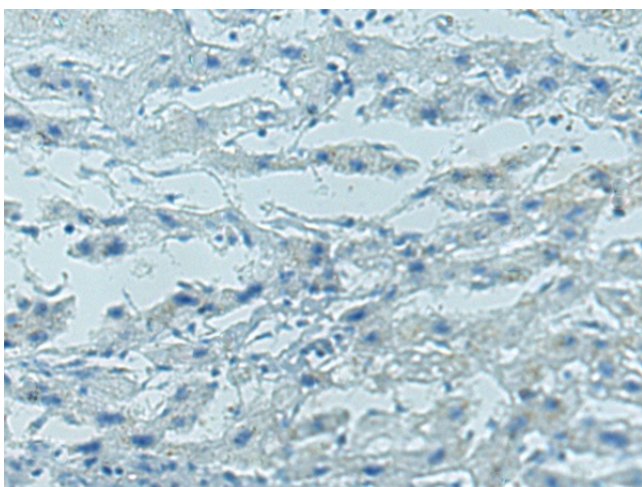
### Product images:



Gel: 12%SDS-PAGE  
Lysate: 40  $\mu$ g  
Lane: 231 cell lysate  
Primary antibody: TA349840 (CXXC5 Antibody) at dilution 1/800  
Secondary antibody: Goat anti rabbit IgG at 1/5000 dilution  
Exposure time: 2 minutes



Immunohistochemistry of paraffin-embedded Human liver cancer tissue using TA349840 (CXXC5 Antibody) at dilution 1/160 (Original magnification:  $\times$ 200)



Immunohistochemistry of paraffin-embedded Human liver cancer tissue using TA349840 (CXXC5 Antibody) at dilution 1/160, treated with fusion protein. (Original magnification: ×200)