

Product datasheet for **TA349839**

Bonzo (CXCR6) Rabbit Polyclonal Antibody

Product data:

Product Type:	Primary Antibodies
Applications:	IHC, WB
Recommended Dilution:	WB: 200-1000 WB positive control: Mouse brain tissue IHC: 50-200 Positive control: Human liver cancer Predicted cell location: Cytoplasm
Reactivity:	Human, Mouse
Host:	Rabbit
Isotype:	IgG
Clonality:	Polyclonal
Immunogen:	Fusion protein of human CXCR6
Formulation:	pH7.4 PBS, 0.05% NaN ₃ , 40% Glycerol
Concentration:	lot specific
Purification:	Antigen affinity purification
Conjugation:	Unconjugated
Storage:	Store at -20°C as received.
Stability:	Stable for 12 months from date of receipt.
Predicted Protein Size:	39 kDa
Gene Name:	C-X-C motif chemokine receptor 6
Database Link:	NP_006555 Entrez Gene 80901 Mouse Entrez Gene 10663 Human O00574



[View online »](#)

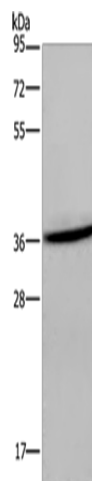
Background: Bonzo (also designated STRL33.3) and BOB (brother of Bonzo; also designated GRP15) are seven-transmembrane, G protein-coupled receptors that are closely related to chemokine receptor family members. In conjunction with CD4, several chemokine receptors are known to serve as receptors for HIV-1 entry into cells. Bonzo and BOB are utilized by simian immunodeficiency virus (SIV), HIV-2 and M-tropic HIV-1 for cell entry. Bonzo and BOB are both expressed in lymphoid tissues, and BOB is also expressed in colon.

Synonyms: BONZO; CD186; STRL33; TYMSTR

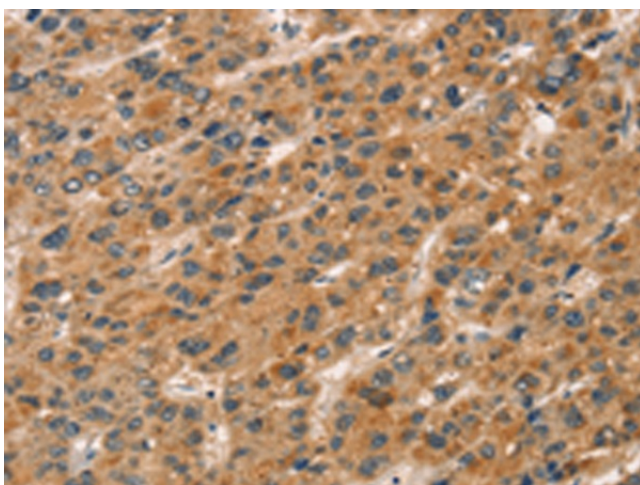
Protein Families: Druggable Genome, GPCR, Transmembrane

Protein Pathways: Chemokine signaling pathway, Cytokine-cytokine receptor interaction

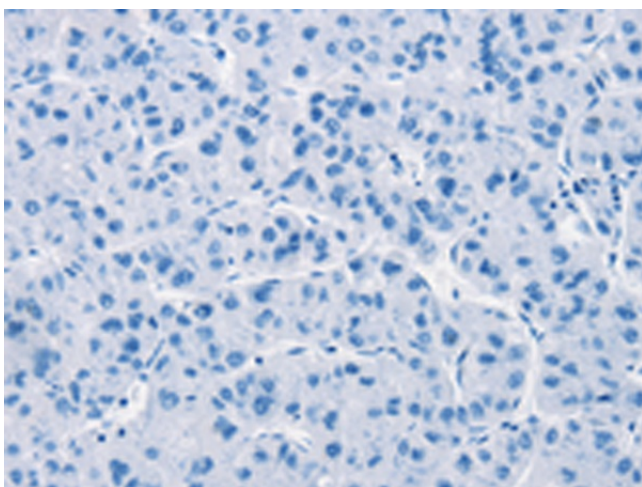
Product images:



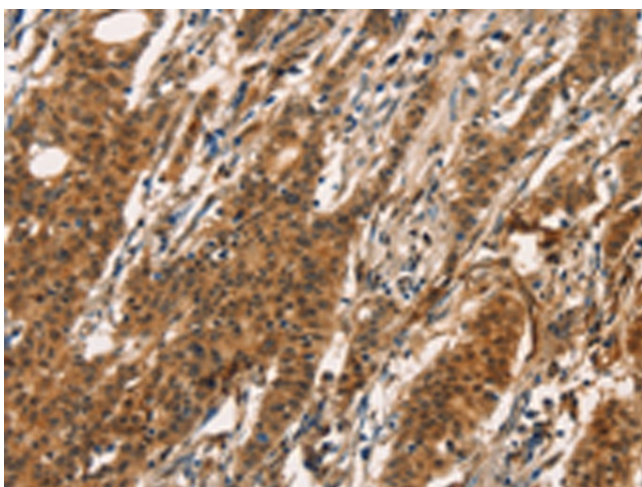
Gel: 8%SDS-PAGE
Lysate: 40 µg
Lane: Mouse brain tissue
Primary antibody: TA349839 (CXCR6 Antibody) at dilution 1/400
Secondary antibody: Goat anti rabbit IgG at 1/8000 dilution
Exposure time: 2 minutes



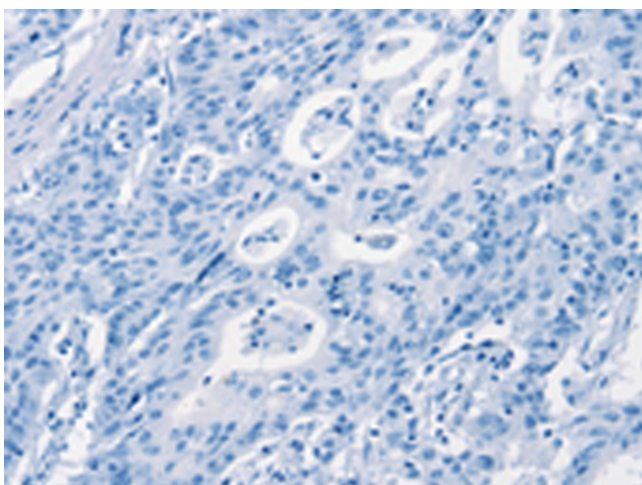
Immunohistochemistry of paraffin-embedded Human liver cancer tissue using TA349839 (CXCR6 Antibody) at dilution 1/20 (Original magnification: ×200)



Immunohistochemistry of paraffin-embedded Human liver cancer tissue using TA349839 (CXCR6 Antibody) at dilution 1/20, treated with fusion protein. (Original magnification: ×200)



Immunohistochemistry of paraffin-embedded Human gastric cancer tissue using TA349839 (CXCR6 Antibody) at dilution 1/20 (Original magnification: ×200)



Immunohistochemistry of paraffin-embedded Human gastric cancer tissue using TA349839 (CXCR6 Antibody) at dilution 1/20, treated with fusion protein. (Original magnification: ×200)