

Product datasheet for **TA349838**

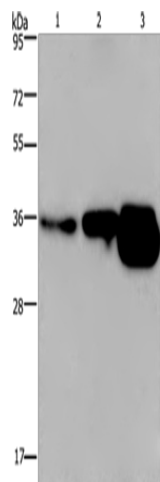
CUEDC2 Rabbit Polyclonal Antibody

Product data:

Product Type:	Primary Antibodies
Applications:	IHC, WB
Recommended Dilution:	WB: 500-2000 WB positive control: Human breast infiltrative duct and fetal brain tissue, mouse brain tissue IHC: 100-300 Positive control: Human breast cancer Predicted cell location: Cytoplasm
Reactivity:	Human, Mouse
Host:	Rabbit
Isotype:	IgG
Clonality:	Polyclonal
Immunogen:	Fusion protein of human CUEDC2
Formulation:	pH7.4 PBS, 0.05% NaN ₃ , 40% Glycerol
Concentration:	lot specific
Purification:	Antigen affinity purification
Conjugation:	Unconjugated
Storage:	Store at -20°C as received.
Stability:	Stable for 12 months from date of receipt.
Predicted Protein Size:	32 kDa
Gene Name:	CUE domain containing 2
Database Link:	NP_076945 Entrez Gene 67116 Mouse Entrez Gene 79004 Human Q9H467
Background:	CUEDC2 is involved in ubiquitin- and proteasome-mediated degradation of progesterone receptor and estrogen receptor (ER)-alpha. CUEDC2 reduced PRB protein content and promoted progesterone-induced PRB degradation via the ubiquitin-proteasome pathway.
Synonyms:	bA18114.5; C10orf66



[View online »](#)

Product images:

Gel: 8%SDS-PAGE

Lysate: 40 μ g

Lane 1-3: Human breast infiltrative duct tissue

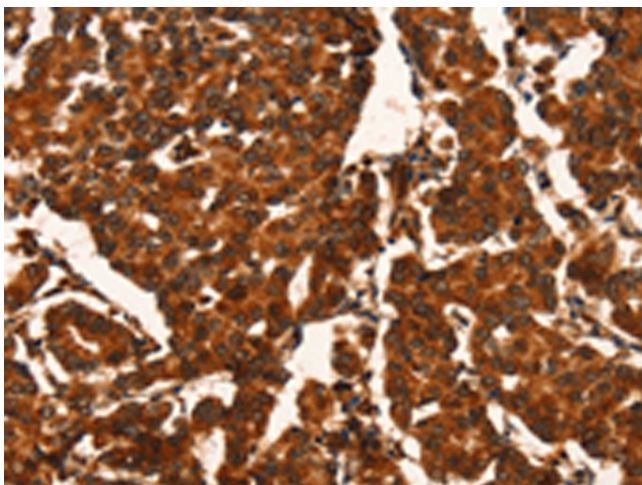
Human fetal brain tissue

mouse brain tissue

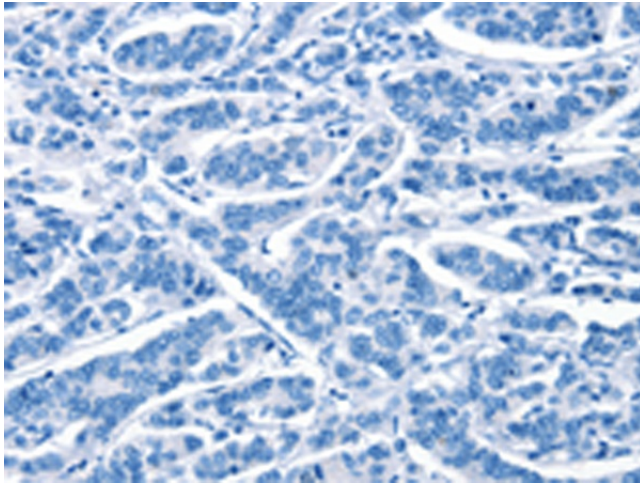
Primary antibody: TA349838 (CUEDC2 Antibody)
at dilution 1/600

Secondary antibody: Goat anti rabbit IgG at
1/8000 dilution

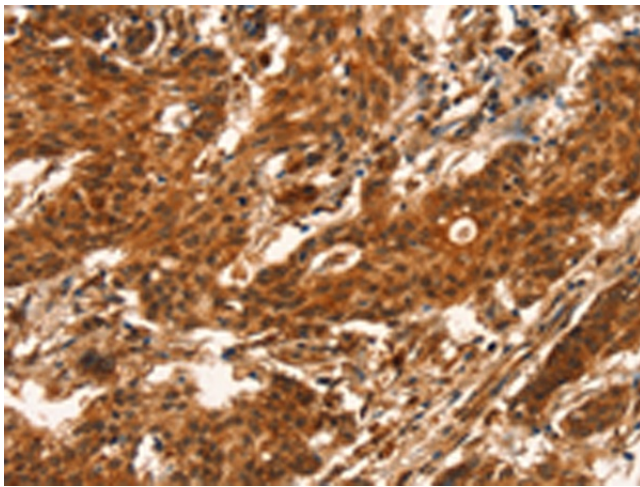
Exposure time: 2 minutes



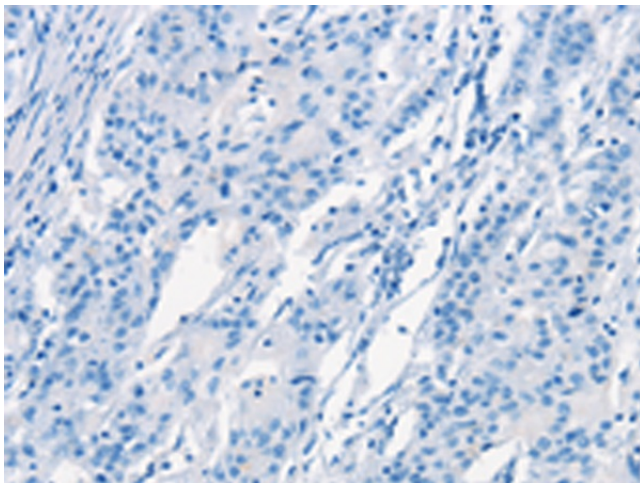
Immunohistochemistry of paraffin-embedded
Human breast cancer tissue using TA349838
(CUEDC2 Antibody) at dilution 1/50 (Original
magnification: \times 200)



Immunohistochemistry of paraffin-embedded Human breast cancer tissue using TA349838 (CUEDC2 Antibody) at dilution 1/50, treated with fusion protein. (Original magnification: ×200)



Immunohistochemistry of paraffin-embedded Human gastric cancer tissue using TA349838 (CUEDC2 Antibody) at dilution 1/50 (Original magnification: ×200)



Immunohistochemistry of paraffin-embedded Human gastric cancer tissue using TA349838 (CUEDC2 Antibody) at dilution 1/50, treated with fusion protein. (Original magnification: ×200)