

## Product datasheet for **TA349837S**

### CTNNBL1 Rabbit Polyclonal Antibody

#### Product data:

Product Type:	Primary Antibodies
Applications:	IHC, WB
Recommended Dilution:	WB: 200-1000 WB positive control: Hepg2□A431 and SKOV3 cell IHC: 100-300 Positive control: Human gastric cancer Predicted cell location: nucleus and cytoplasm
Reactivity:	Human, Mouse, Rat
Host:	Rabbit
Isotype:	IgG
Clonality:	Polyclonal
Immunogen:	Fusion protein of human CTNNBL1
Formulation:	pH7.4 PBS, 0.05% NaN <sub>3</sub> , 40% Glycerol
Purification:	Antigen affinity purification
Conjugation:	Unconjugated
Storage:	Store at -20°C as received.
Stability:	Stable for 12 months from date of receipt.
Gene Name:	catenin beta like 1
Database Link:	<a href="#">NP_110517</a> <a href="#">Entrez Gene 66642 Mouse</a> <a href="#">Entrez Gene 296320 Rat</a> <a href="#">Entrez Gene 56259 Human</a> <a href="#">Q8WYA6</a>

**Background:** The protein encoded by this gene is a component of the pre-mRNA-processing factor 19-cell division cycle 5-like (PRP19-CDC5L) protein complex, which activates pre-mRNA splicing and is an integral part of the spliceosome. The encoded protein is also a nuclear localization sequence binding protein, and binds to activation-induced deaminase and is important for antibody diversification. This gene may also be associated with the development of obesity. Alternative splicing results in multiple transcript variants. A pseudogene of this gene has been defined on the X chromosome.

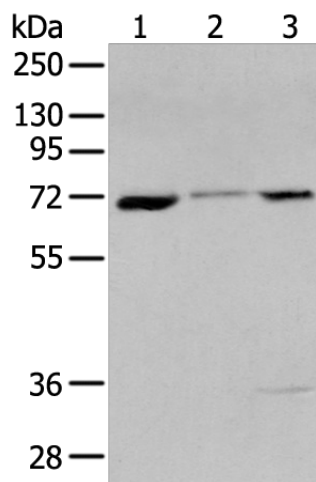


[View online »](#)

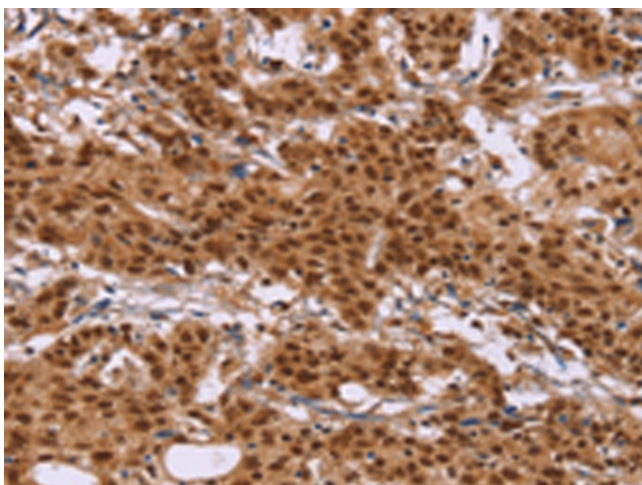
Synonyms: C20orf33; dj633O20.1; NAP; P14L; PP8304

Protein Pathways: Spliceosome

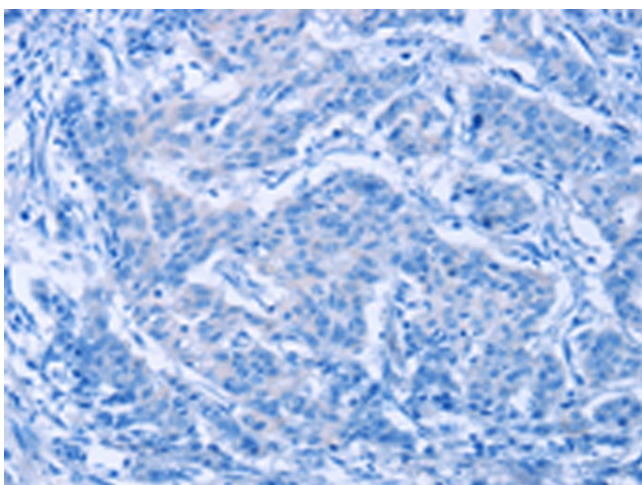
### Product images:



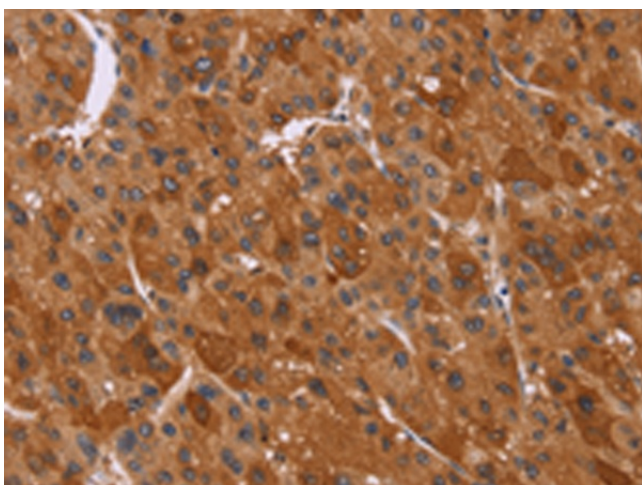
Gel: 8%SDS-PAGE  
Lysate: 40  $\mu$ g  
Lane 1-3: Hepg2  
A431 and SKOV3 cell  
Primary antibody: [TA349837] (CTNNB1  
Antibody) at dilution 1/200  
Secondary antibody: Goat anti rabbit IgG at  
1/8000 dilution  
Exposure time: 5 seconds



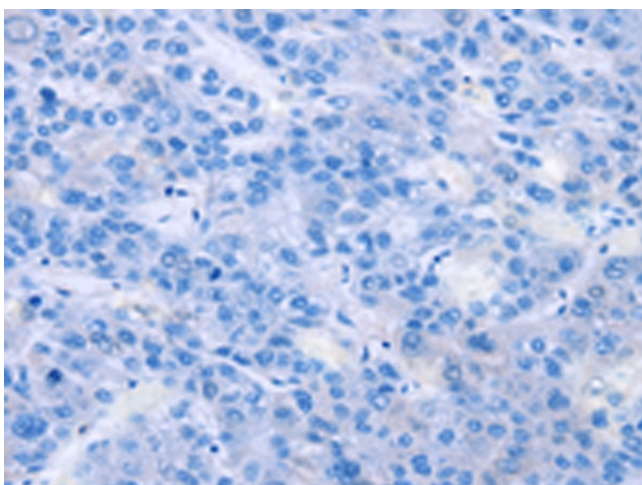
Immunohistochemistry of paraffin-embedded  
Human gastric cancer tissue using [TA349837]  
(CTNNB1 Antibody) at dilution 1/50 (Original  
magnification:  $\times 200$ )



Immunohistochemistry of paraffin-embedded Human gastric cancer tissue using [TA349837] (CTNNB1 Antibody) at dilution 1/50, treated with fusion protein. (Original magnification: ×200)



Immunohistochemistry of paraffin-embedded Human liver cancer tissue using [TA349837] (CTNNB1 Antibody) at dilution 1/50 (Original magnification: ×200)



Immunohistochemistry of paraffin-embedded Human liver cancer tissue using [TA349837] (CTNNB1 Antibody) at dilution 1/50, treated with fusion protein. (Original magnification: ×200)