

Product datasheet for **TA349837**

CTNNBL1 Rabbit Polyclonal Antibody

Product data:

Product Type:	Primary Antibodies
Applications:	IHC, WB
Recommended Dilution:	WB: 200-1000 WB positive control: Hepg2□A431 and SKOV3 cell IHC: 100-300 Positive control: Human gastric cancer Predicted cell location: nucleus and cytoplasm
Reactivity:	Human, Mouse, Rat
Host:	Rabbit
Isotype:	IgG
Clonality:	Polyclonal
Immunogen:	Fusion protein of human CTNNBL1
Formulation:	pH7.4 PBS, 0.05% NaN ₃ , 40% Glycerol
Concentration:	lot specific
Purification:	Antigen affinity purification
Conjugation:	Unconjugated
Storage:	Store at -20°C as received.
Stability:	Stable for 12 months from date of receipt.
Gene Name:	catenin beta like 1
Database Link:	NP_110517 Entrez Gene 66642 Mouse Entrez Gene 296320 Rat Entrez Gene 56259 Human Q8WYA6



[View online »](#)

Background:

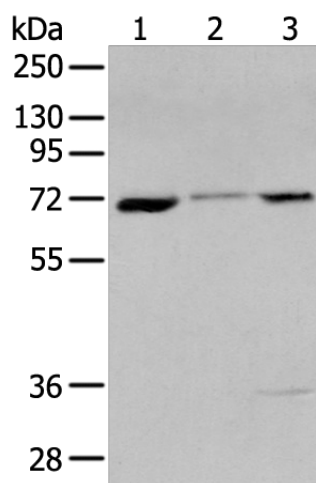
The protein encoded by this gene is a component of the pre-mRNA-processing factor 19-cell division cycle 5-like (PRP19-CDC5L) protein complex, which activates pre-mRNA splicing and is an integral part of the spliceosome. The encoded protein is also a nuclear localization sequence binding protein, and binds to activation-induced deaminase and is important for antibody diversification. This gene may also be associated with the development of obesity. Alternative splicing results in multiple transcript variants. A pseudogene of this gene has been defined on the X chromosome.

Synonyms:

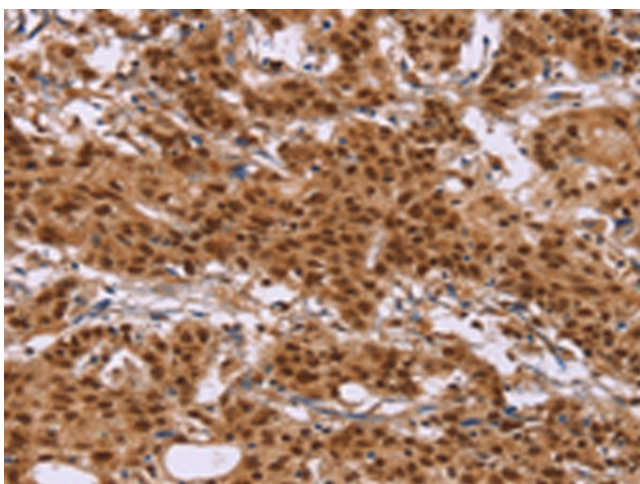
C20orf33; dj633020.1; NAP; P14L; PP8304

Protein Pathways:

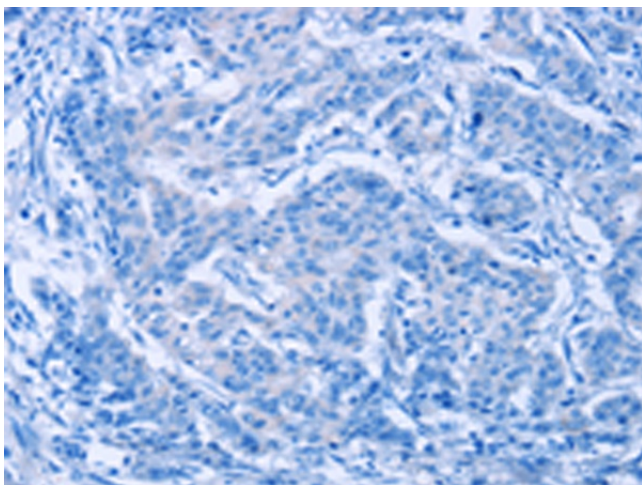
Spliceosome

Product images:

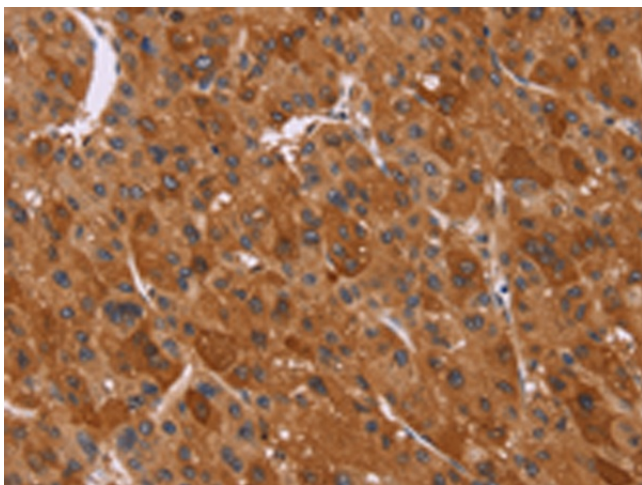
Gel: 8%SDS-PAGE
Lysate: 40 µg
Lane 1-3: Hepg2
A431 and SKOV3 cell
Primary antibody: TA349837 (CTNNBL1 Antibody)
at dilution 1/200
Secondary antibody: Goat anti rabbit IgG at
1/8000 dilution
Exposure time: 5 seconds



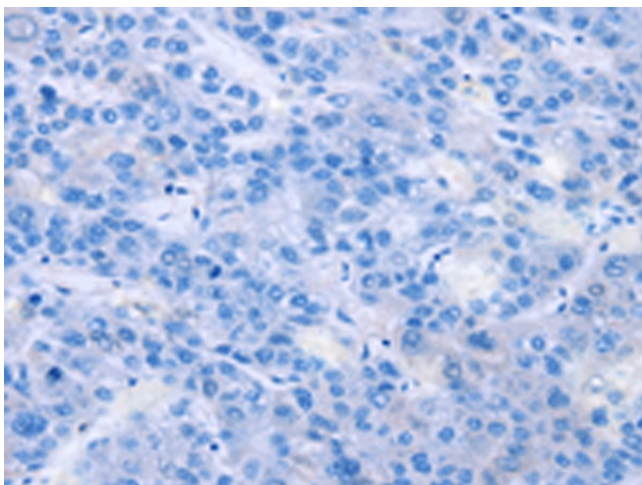
Immunohistochemistry of paraffin-embedded
Human gastric cancer tissue using TA349837
(CTNNBL1 Antibody) at dilution 1/50 (Original
magnification: ×200)



Immunohistochemistry of paraffin-embedded Human gastric cancer tissue using TA349837 (CTNNB1 Antibody) at dilution 1/50, treated with fusion protein. (Original magnification: ×200)



Immunohistochemistry of paraffin-embedded Human liver cancer tissue using TA349837 (CTNNB1 Antibody) at dilution 1/50 (Original magnification: ×200)



Immunohistochemistry of paraffin-embedded Human liver cancer tissue using TA349837 (CTNNB1 Antibody) at dilution 1/50, treated with fusion protein. (Original magnification: ×200)