

## Product datasheet for **TA349833**

### Casein Kinase 1 delta (CSNK1D) Rabbit Polyclonal Antibody

#### Product data:

Product Type:	Primary Antibodies
Applications:	IHC, WB
Recommended Dilution:	WB: 200-1000 WB positive control: 293T cells IHC: 50-200 Positive control: Human liver cancer Predicted cell location: Cytoplasm
Reactivity:	Human, Mouse, Rat
Host:	Rabbit
Isotype:	IgG
Clonality:	Polyclonal
Immunogen:	Fusion protein of human CSNK1D
Formulation:	pH7.4 PBS, 0.05% NaN <sub>3</sub> , 40% Glycerol
Concentration:	lot specific
Purification:	Antigen affinity purification
Conjugation:	Unconjugated
Storage:	Store at -20°C as received.
Stability:	Stable for 12 months from date of receipt.
Predicted Protein Size:	47 kDa
Gene Name:	casein kinase 1 delta
Database Link:	<a href="#">NP_001884</a> <a href="#">Entrez Gene 64462 Rat</a> <a href="#">Entrez Gene 104318 Mouse</a> <a href="#">Entrez Gene 1453 Human</a> <a href="#">P48730</a>
Background:	This gene is a member of the casein kinase I (CKI) gene family whose members have been implicated in the control of cytoplasmic and nuclear processes, including DNA replication and repair. The encoded protein is highly similar to the mouse and rat CK1 delta homologs. Two transcript variants encoding different isoforms have been found for this gene
Synonyms:	ASPS; CKIdelta; FASPS2; HCKID

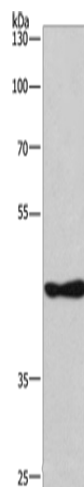


[View online »](#)

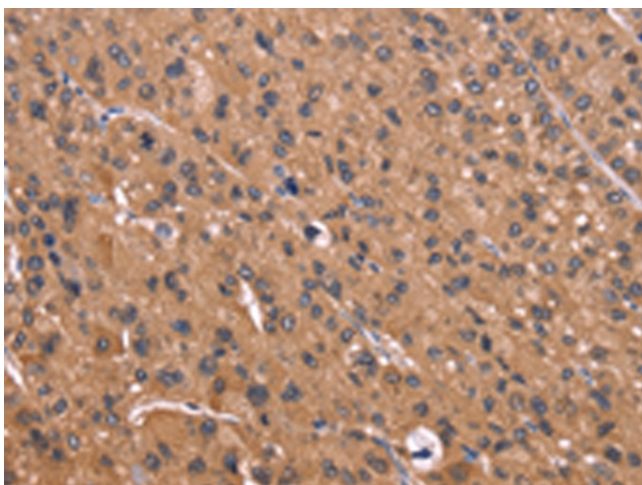
**Protein Families:** Druggable Genome, Protein Kinase

**Protein Pathways:** Circadian rhythm - mammal, Gap junction, Hedgehog signaling pathway

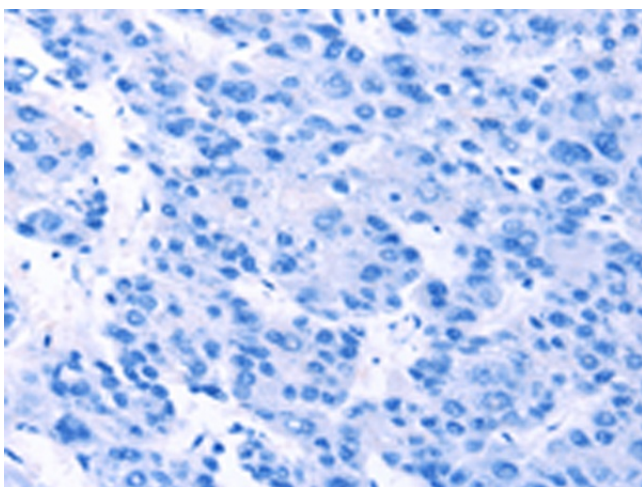
**Product images:**



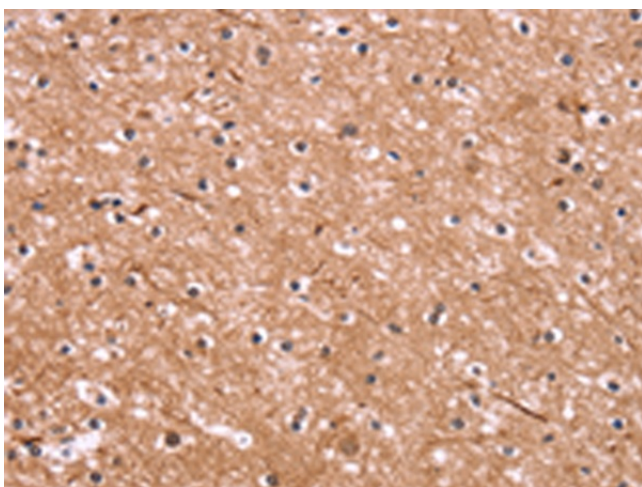
Gel: 8%SDS-PAGE  
Lysate: 40  $\mu$ g  
Lane: 293T cells  
Primary antibody: TA349833 (CSNK1D Antibody)  
at dilution 1/270  
Secondary antibody: Goat anti rabbit IgG at  
1/8000 dilution  
Exposure time: 5 minutes



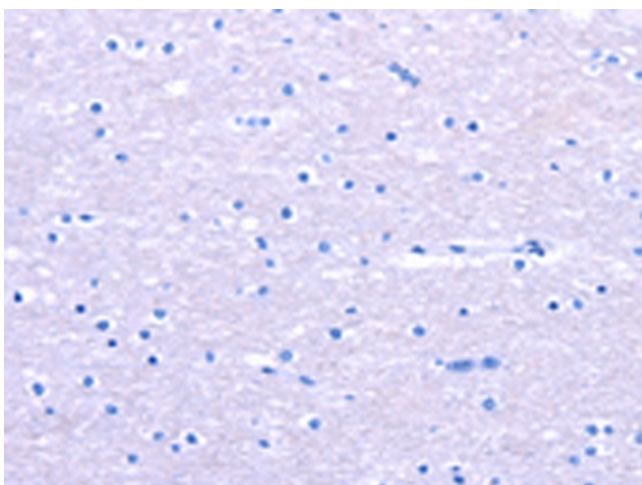
Immunohistochemistry of paraffin-embedded  
Human liver cancer tissue using TA349833  
(CSNK1D Antibody) at dilution 1/50 (Original  
magnification:  $\times$ 200)



Immunohistochemistry of paraffin-embedded Human liver cancer tissue using TA349833 (CSNK1D Antibody) at dilution 1/50, treated with fusion protein. (Original magnification:  $\times 200$ )



Immunohistochemistry of paraffin-embedded Human brain tissue using TA349833 (CSNK1D Antibody) at dilution 1/50 (Original magnification:  $\times 200$ )



Immunohistochemistry of paraffin-embedded Human brain tissue using TA349833 (CSNK1D Antibody) at dilution 1/50, treated with fusion protein. (Original magnification:  $\times 200$ )