

## Product datasheet for **TA349832**

### CROT Rabbit Polyclonal Antibody

#### Product data:

Product Type:	Primary Antibodies
Applications:	IHC, WB
Recommended Dilution:	WB: 1000-5000 WB positive control: Mouse kidney tissue, Mouse liver tissue lysates IHC: 150-300 Positive control: Human colorectal cancer Predicted cell location: Cytoplasm
Reactivity:	Human, Mouse, Rat
Host:	Rabbit
Isotype:	IgG
Clonality:	Polyclonal
Immunogen:	Fusion protein of human CROT
Formulation:	pH7.4 PBS, 0.05% NaN <sub>3</sub> , 40% Glycerol
Concentration:	lot specific
Purification:	Antigen affinity purification
Conjugation:	Unconjugated
Storage:	Store at -20°C as received.
Stability:	Stable for 12 months from date of receipt.
Predicted Protein Size:	70 kDa
Gene Name:	carnitine O-octanoyltransferase
Database Link:	<a href="#">NP_066974</a> <a href="#">Entrez Gene 74114 Mouse</a> <a href="#">Entrez Gene 83842 Rat</a> <a href="#">Entrez Gene 54677 Human</a> <a href="#">Q9UKG9</a>



[View online »](#)

**Background:**

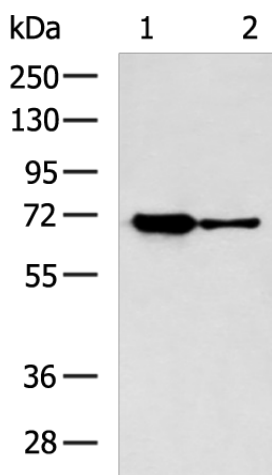
This gene encodes a member of the carnitine/choline acetyltransferase family. The encoded protein converts 4,8-dimethylnonanoyl-CoA to its corresponding carnitine ester. This transesterification occurs in the peroxisome and is necessary for transport of medium- and long- chain acyl-CoA molecules out of the peroxisome to the cytosol and mitochondria. The protein thus plays a role in lipid metabolism and fatty acid beta-oxidation. Alternatively spliced transcript variants have been described

**Synonyms:**

COT

**Protein Families:**

Druggable Genome

**Product images:**

Gel: 8%SDS-PAGE

Lysate: 40 µg

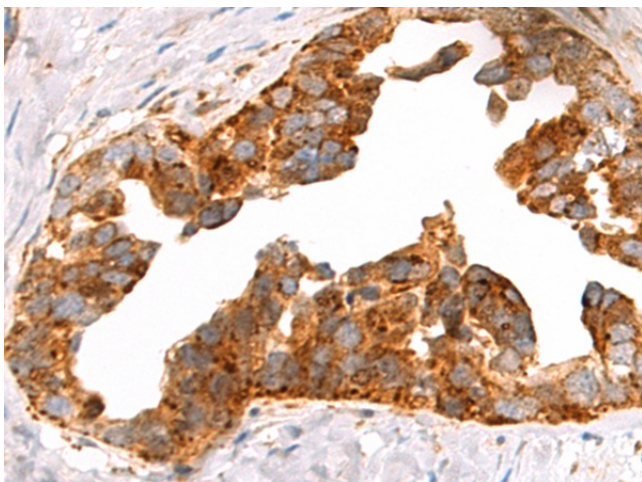
Lane 1-2: Mouse kidney tissue

Mouse liver tissue lysates

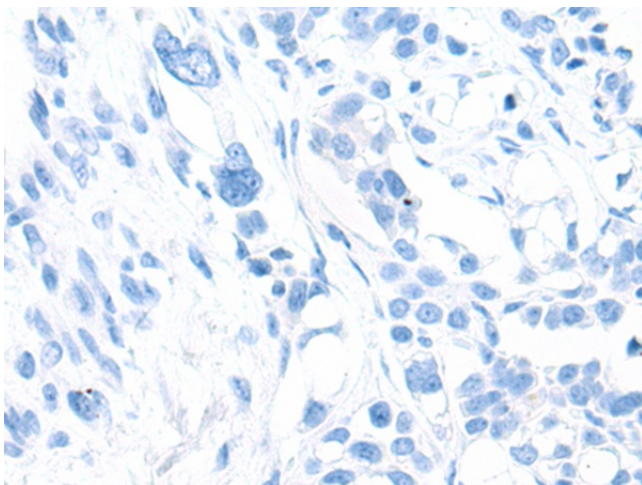
Primary antibody: TA349832 (CROT Antibody) at dilution 1/1000

Secondary antibody: Goat anti rabbit IgG at 1/5000 dilution

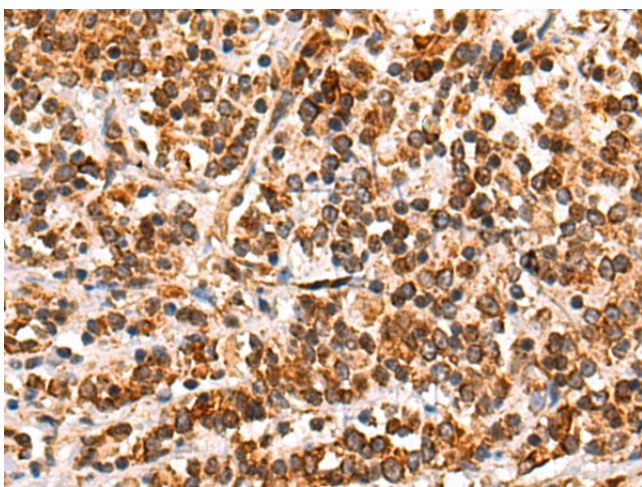
Exposure time: 30 seconds



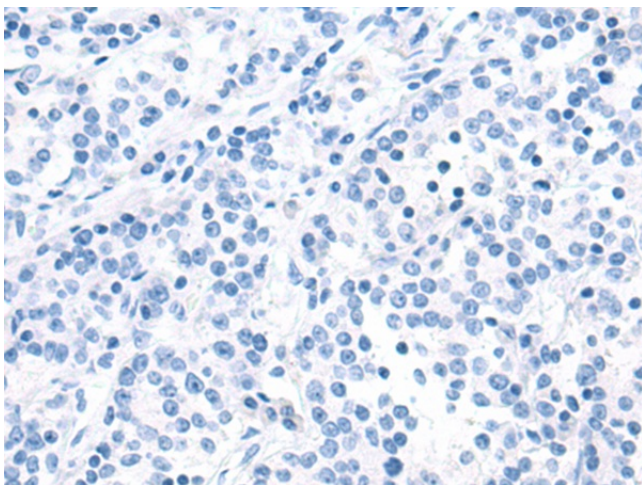
Immunohistochemistry of paraffin-embedded Human colorectal cancer tissue using TA349832 (CROT Antibody) at dilution 1/140 (Original magnification: x200)



Immunohistochemistry of paraffin-embedded Human colorectal cancer tissue using TA349832 (CROT Antibody) at dilution 1/140, treated with fusion protein. (Original magnification: ×200)



Immunohistochemistry of paraffin-embedded Human gastric cancer tissue using TA349832 (CROT Antibody) at dilution 1/140 (Original magnification: ×200)



Immunohistochemistry of paraffin-embedded Human gastric cancer tissue using TA349832 (CROT Antibody) at dilution 1/140, treated with fusion protein. (Original magnification: ×200)