

## Product datasheet for **TA349831**

### p38 (CRK) Rabbit Polyclonal Antibody

#### Product data:

Product Type:	Primary Antibodies
Applications:	IHC
Recommended Dilution:	IHC: 50-200 Positive control: Human colon cancer Predicted cell location: Cytoplasm
Reactivity:	Human, Mouse, Rat
Host:	Rabbit
Isotype:	IgG
Clonality:	Polyclonal
Immunogen:	Fusion protein of human CRK
Formulation:	pH7.4 PBS, 0.05% NaN3, 40% GlycerolIn
Concentration:	lot specific
Purification:	Antigen affinity purification
Conjugation:	Unconjugated
Storage:	Store at -20°C as received.
Stability:	Stable for 12 months from date of receipt.
Gene Name:	v-crk avian sarcoma virus CT10 oncogene homolog
Database Link:	<a href="#">NP_058431</a> <a href="#">Entrez Gene 12928 Mouse</a> <a href="#">Entrez Gene 54245 Rat</a> <a href="#">Entrez Gene 1398 Human</a> <a href="#">P46108</a>

**Background:** This gene encodes a member of an adapter protein family that binds to several tyrosine-phosphorylated proteins. The product of this gene has several SH2 and SH3 domains (src-homology domains) and is involved in several signaling pathways, recruiting cytoplasmic proteins in the vicinity of tyrosine kinase through SH2-phosphotyrosine interaction. The N-terminal SH2 domain of this protein functions as a positive regulator of transformation whereas the C-terminal SH3 domain functions as a negative regulator of transformation. Two alternative transcripts encoding different isoforms with distinct biological activity have been described.



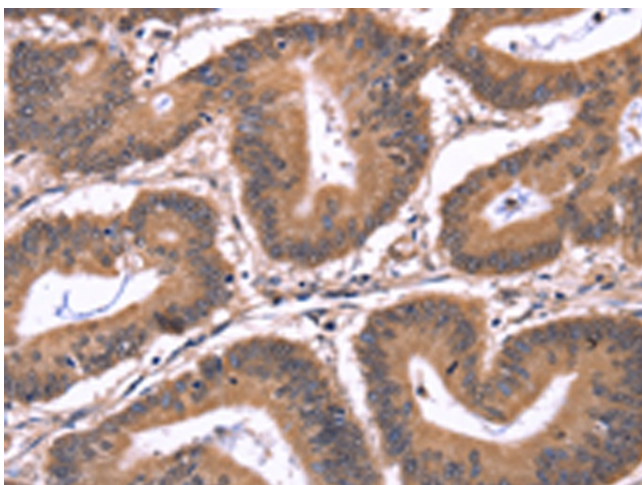
[View online »](#)

**Synonyms:** CRKII; p38

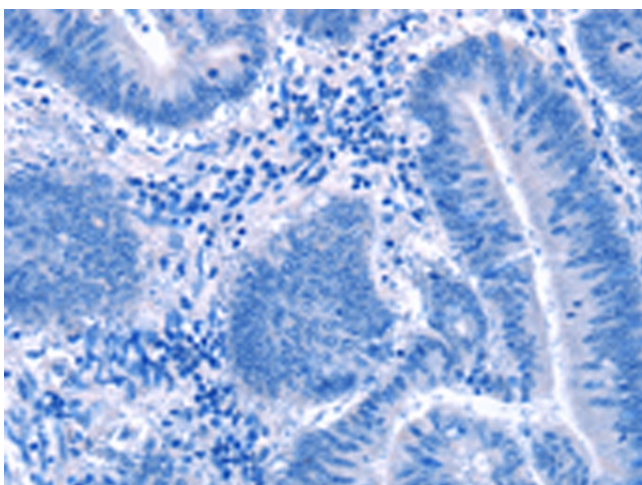
**Protein Families:** Druggable Genome, Transcription Factors

**Protein Pathways:** Chemokine signaling pathway, Chronic myeloid leukemia, ErbB signaling pathway, Fc gamma R-mediated phagocytosis, Focal adhesion, Insulin signaling pathway, MAPK signaling pathway, Neurotrophin signaling pathway, Pathways in cancer, Regulation of actin cytoskeleton, Renal cell carcinoma

### Product images:



Immunohistochemistry of paraffin-embedded Human colon cancer tissue using TA349831 (CRK Antibody) at dilution 1/50 (Original magnification: ×200)



Immunohistochemistry of paraffin-embedded Human colon cancer tissue using TA349831 (CRK Antibody) at dilution 1/50, treated with fusion protein. (Original magnification: ×200)