

Product datasheet for **TA349829**

CRELD2 Rabbit Polyclonal Antibody

Product data:

Product Type:	Primary Antibodies
Applications:	IHC, WB
Recommended Dilution:	WB: 500-2000 WB positive control: Human normal colon tissue IHC: 50-200 Positive control: Human thyroid cancer Predicted cell location: Cytoplasm
Reactivity:	Human
Host:	Rabbit
Isotype:	IgG
Clonality:	Polyclonal
Immunogen:	Fusion protein of human CRELD2
Formulation:	pH7.4 PBS, 0.05% NaN ₃ , 40% Glycerol
Concentration:	lot specific
Purification:	Antigen affinity purification
Conjugation:	Unconjugated
Storage:	Store at -20°C as received.
Stability:	Stable for 12 months from date of receipt.
Predicted Protein Size:	38 kDa
Gene Name:	cysteine rich with EGF like domains 2
Database Link:	NP_077300 Entrez Gene 79174 Human Q6UXH1



[View online »](#)

Background:

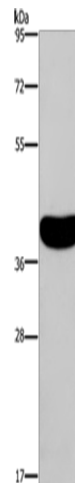
The epidermal growth factor (EGF) repeat-containing proteins constitute an expanding family of proteins that are involved in several cellular activities, such as blood coagulation, fibrinolysis, cell adhesion and neural and vertebrate development. CRELD2 (cysteine-rich with EGF-like domains 2) is a 353 amino acid protein that is ubiquitously expressed and contains two FU domains and two EGF-like domains. Localized to the endoplasmic reticulum and secreted into the cell, CRELD2 interacts with AChR α 4, possibly regulating its transport. Human CRELD2 shares 69% amino acid identity with its mouse counterpart, suggesting a conserved role between species. Multiple isoforms of CRELD2 exist due to alternative splicing events. The gene encoding CRELD2 maps to human chromosome 22, which houses over 500 genes and is the second smallest human chromosome. Mutations in several of the genes that map to chromosome 22 are involved in the development of Phelan-McDermid syndrome, Neurofibromatosis type 2, autism and schizophrenia.

Synonyms:

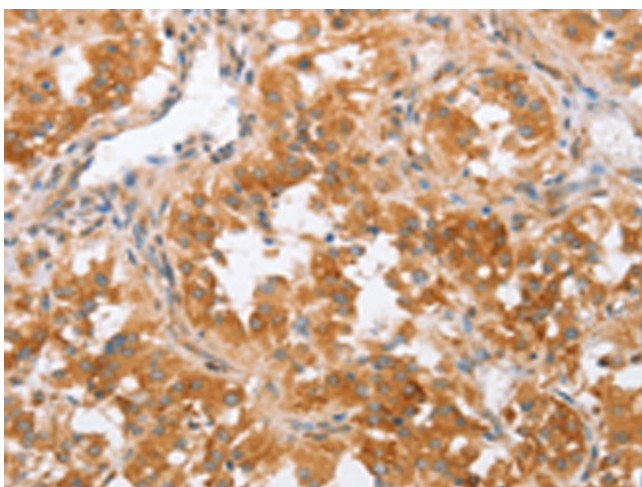
DKFZp667O055; MGC11256

Protein Families:

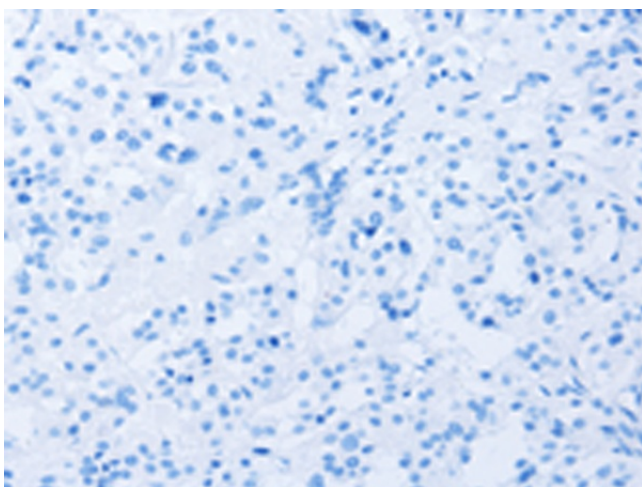
Druggable Genome, Secreted Protein

Product images:

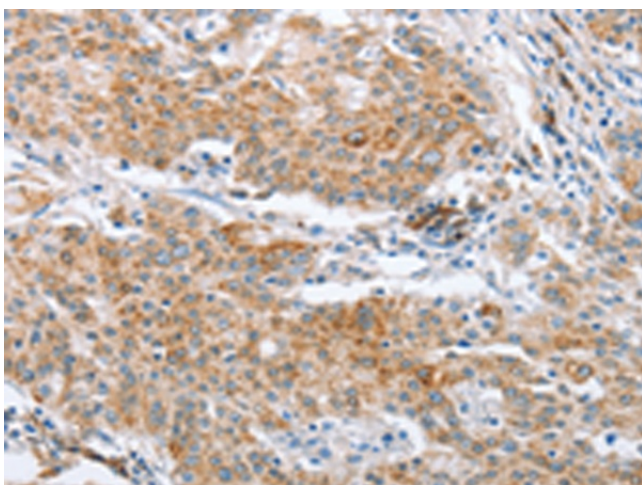
Gel: 8%SDS-PAGE
Lysate: 40 μ g
Lane: Human normal colon tissue
Primary antibody: TA349829 (CRELD2 Antibody)
at dilution 1/550
Secondary antibody: Goat anti rabbit IgG at
1/8000 dilution
Exposure time: 2 minutes



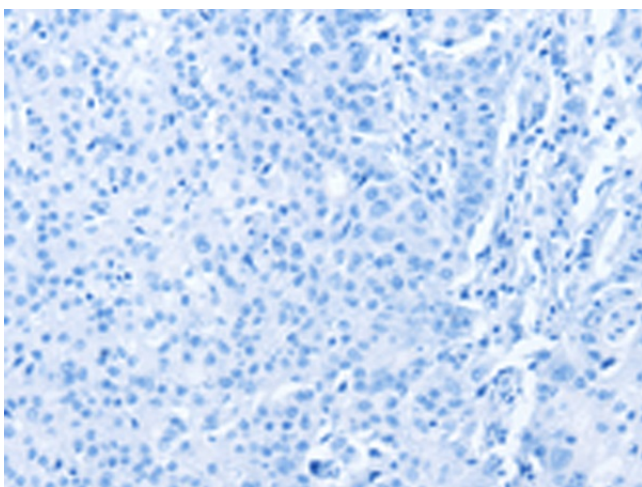
Immunohistochemistry of paraffin-embedded Human thyroid cancer tissue using TA349829 (CRELD2 Antibody) at dilution 1/50 (Original magnification: $\times 200$)



Immunohistochemistry of paraffin-embedded Human thyroid cancer tissue using TA349829 (CRELD2 Antibody) at dilution 1/50, treated with fusion protein. (Original magnification: $\times 200$)



Immunohistochemistry of paraffin-embedded Human gastric cancer tissue using TA349829 (CRELD2 Antibody) at dilution 1/50 (Original magnification: $\times 200$)



Immunohistochemistry of paraffin-embedded Human gastric cancer tissue using TA349829 (CRELD2 Antibody) at dilution 1/50, treated with fusion protein. (Original magnification: $\times 200$)