

Product datasheet for **TA349828S**

c Rel (REL) Rabbit Polyclonal Antibody

Product data:

Product Type:	Primary Antibodies
Applications:	IHC, WB
Recommended Dilution:	WB: 1000-5000 WB positive control: Hela and 293T cells IHC: 100-300 Positive control: Human cervical cancer Predicted cell location: Nucleus or Cytoplasm
Reactivity:	Human
Host:	Rabbit
Isotype:	IgG
Clonality:	Polyclonal
Immunogen:	Fusion protein of human REL
Formulation:	pH7.4 PBS, 0.05% NaN ₃ , 40% Glycerol
Purification:	Antigen affinity purification
Conjugation:	Unconjugated
Storage:	Store at -20°C as received.
Stability:	Stable for 12 months from date of receipt.
Predicted Protein Size:	69 kDa
Gene Name:	REL proto-oncogene, NF-kB subunit
Database Link:	NP_002899 Entrez Gene 5966 Human Q04864

Background: The REL gene encodes c-Rel, a transcription factor that is a member of the Rel/NFkB family, which also includes RELA (MIM 164014), RELB (604758), NFkB1 (MIM 164011), and NFkB2 (MIM 164012). These proteins are related through a highly conserved N-terminal region termed the 'Rel domain,' which is responsible for DNA binding, dimerization, nuclear localization, and binding to the NFkB inhibitor

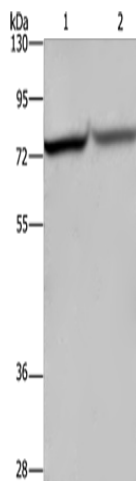
Synonyms: C-Rel



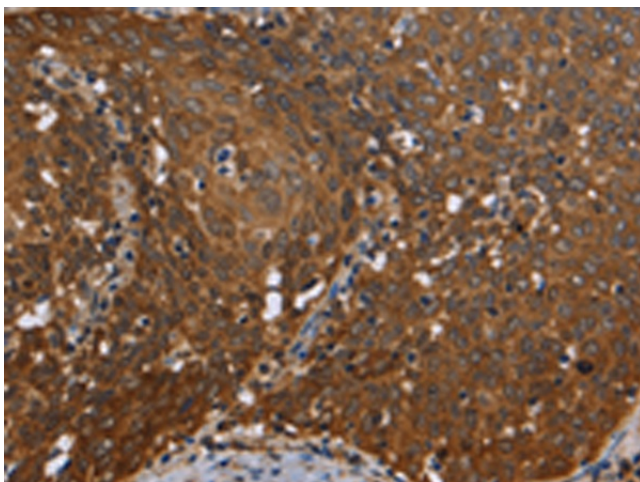
[View online »](#)

Protein Families: Druggable Genome, Transcription Factors

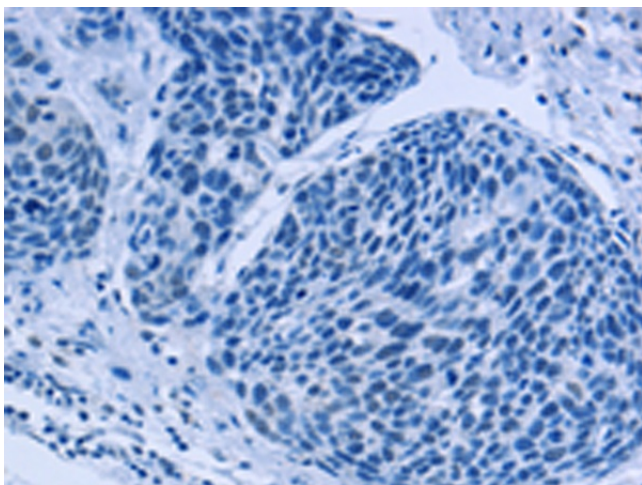
Product images:



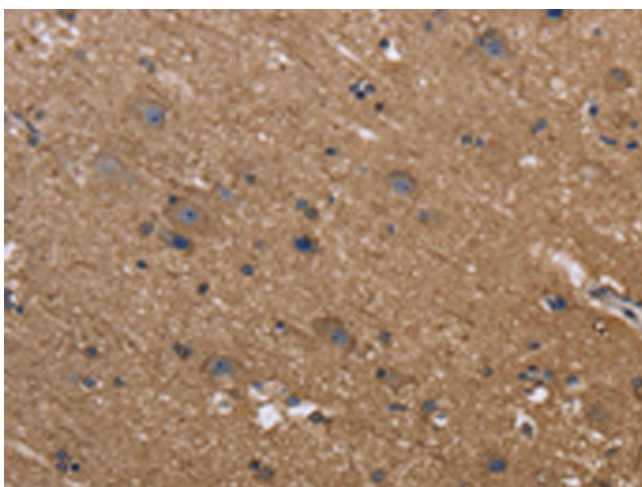
Gel: 6%SDS-PAGE
Lysate: 40 μ g
Lane 1-2: HeLa cells
293T cells
Primary antibody: [TA349828] (REL Antibody) at dilution 1/1050
Secondary antibody: Goat anti rabbit IgG at 1/8000 dilution
Exposure time: 5 seconds



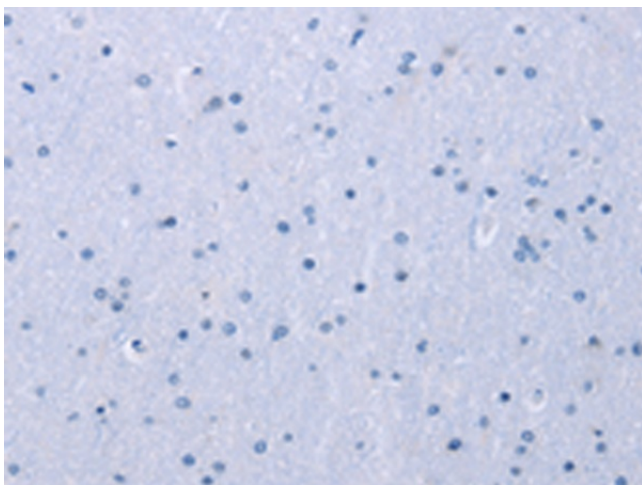
Immunohistochemistry of paraffin-embedded Human cervical cancer tissue using [TA349828] (REL Antibody) at dilution 1/50 (Original magnification: \times 200)



Immunohistochemistry of paraffin-embedded Human cervical cancer tissue using [TA349828] (REL Antibody) at dilution 1/50, treated with fusion protein. (Original magnification: $\times 200$)



Immunohistochemistry of paraffin-embedded Human brain tissue using [TA349828] (REL Antibody) at dilution 1/50 (Original magnification: $\times 200$)



Immunohistochemistry of paraffin-embedded Human brain tissue using [TA349828] (REL Antibody) at dilution 1/50, treated with fusion protein. (Original magnification: $\times 200$)