

Product datasheet for **TA349828**

c Rel (REL) Rabbit Polyclonal Antibody

Product data:

Product Type:	Primary Antibodies
Applications:	IHC, WB
Recommended Dilution:	WB: 1000-5000 WB positive control: Hela and 293T cells IHC: 100-300 Positive control: Human cervical cancer Predicted cell location: Nucleus or Cytoplasm
Reactivity:	Human
Host:	Rabbit
Isotype:	IgG
Clonality:	Polyclonal
Immunogen:	Fusion protein of human REL
Formulation:	pH7.4 PBS, 0.05% NaN ₃ , 40% Glycerol
Concentration:	lot specific
Purification:	Antigen affinity purification
Conjugation:	Unconjugated
Storage:	Store at -20°C as received.
Stability:	Stable for 12 months from date of receipt.
Predicted Protein Size:	69 kDa
Gene Name:	REL proto-oncogene, NF-κB subunit
Database Link:	NP_002899 Entrez Gene 5966 Human Q04864
Background:	The REL gene encodes c-Rel, a transcription factor that is a member of the Rel/NFκB family, which also includes RELA (MIM 164014), RELB (604758), NFκB1 (MIM 164011), and NFκB2 (MIM 164012). These proteins are related through a highly conserved N-terminal region termed the 'Rel domain,' which is responsible for DNA binding, dimerization, nuclear localization, and binding to the NFκB inhibitor



[View online »](#)

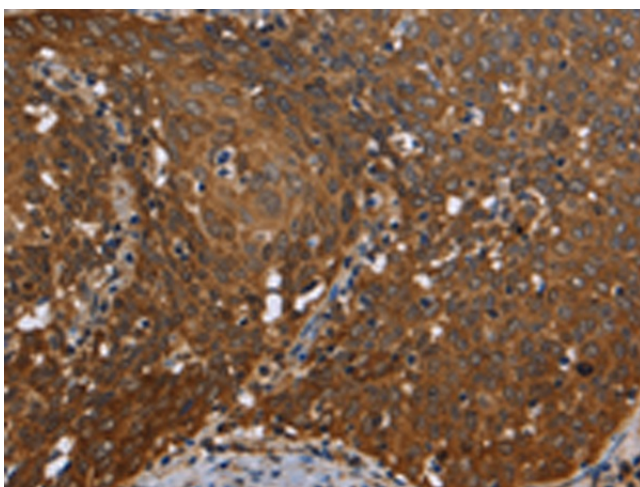
Synonyms: C-Rel

Protein Families: Druggable Genome, Transcription Factors

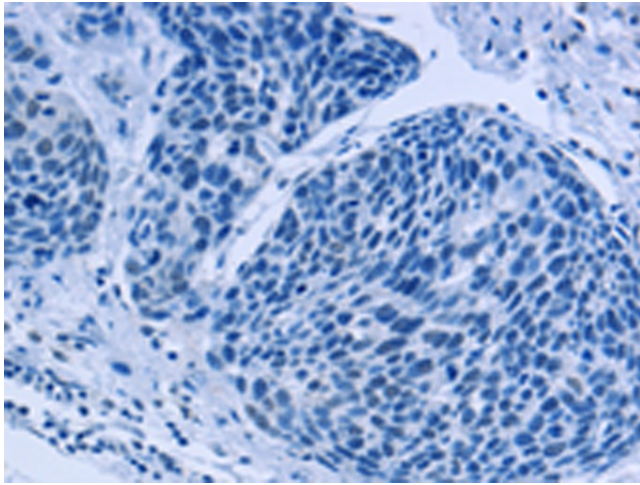
Product images:



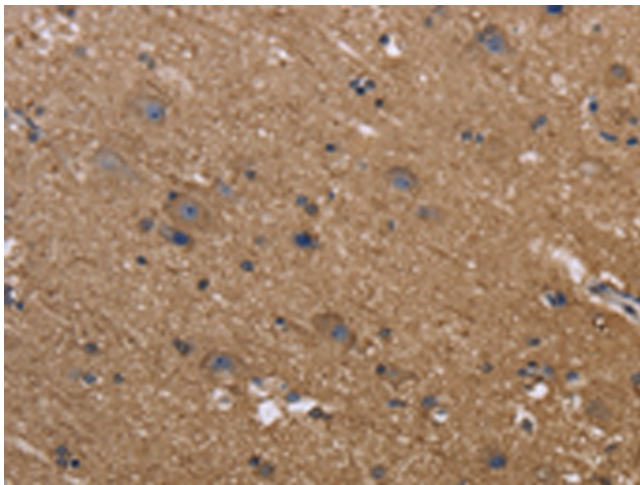
Gel: 6%SDS-PAGE
Lysate: 40 μ g
Lane 1-2: HeLa cells
293T cells
Primary antibody: TA349828 (REL Antibody) at
dilution 1/1050
Secondary antibody: Goat anti rabbit IgG at
1/8000 dilution
Exposure time: 5 seconds



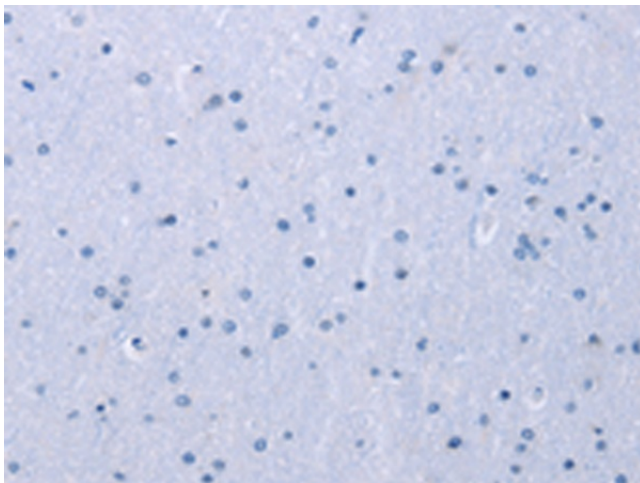
Immunohistochemistry of paraffin-embedded
Human cervical cancer tissue using TA349828
(REL Antibody) at dilution 1/50 (Original
magnification: \times 200)



Immunohistochemistry of paraffin-embedded Human cervical cancer tissue using TA349828 (REL Antibody) at dilution 1/50, treated with fusion protein. (Original magnification: ×200)



Immunohistochemistry of paraffin-embedded Human brain tissue using TA349828 (REL Antibody) at dilution 1/50 (Original magnification: ×200)



Immunohistochemistry of paraffin-embedded Human brain tissue using TA349828 (REL Antibody) at dilution 1/50, treated with fusion protein. (Original magnification: ×200)