

Product datasheet for **TA349821**

Coronin 3 (CORO1C) Rabbit Polyclonal Antibody

Product data:

Product Type:	Primary Antibodies
Applications:	IHC, WB
Recommended Dilution:	WB: 500-2000 WB positive control: Lovo cells IHC: 100-300 Positive control: Human liver cancer Predicted cell location: Cytoplasm
Reactivity:	Human, Mouse
Host:	Rabbit
Isotype:	IgG
Clonality:	Polyclonal
Immunogen:	Fusion protein of human CORO1C
Formulation:	pH7.4 PBS, 0.05% NaN ₃ , 40% Glycerol
Concentration:	lot specific
Purification:	Antigen affinity purification
Conjugation:	Unconjugated
Storage:	Store at -20°C as received.
Stability:	Stable for 12 months from date of receipt.
Predicted Protein Size:	53 kDa
Gene Name:	coronin 1C
Database Link:	NP_055140 Entrez Gene 23790 Mouse Entrez Gene 23603 Human Q9ULV4



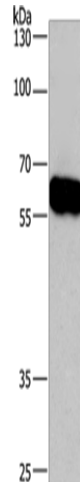
[View online »](#)

Background:

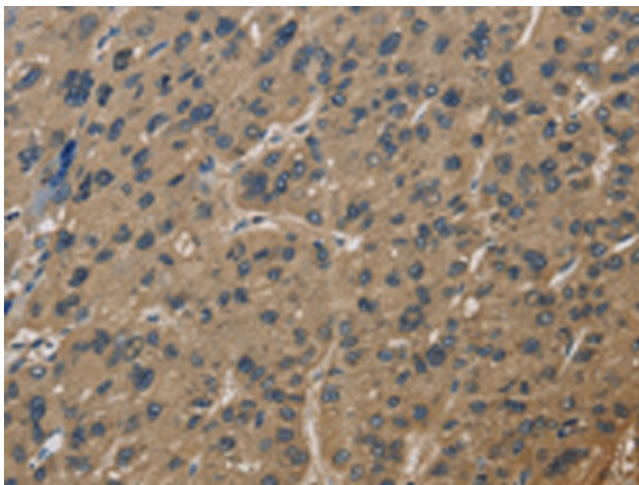
This gene encodes a member of the WD repeat protein family. WD repeats are minimally conserved regions of approximately 40 amino acids typically bracketed by gly-his and trp-asp (GH-WD), which may facilitate formation of heterotrimeric or multiprotein complexes. Members of this family are involved in a variety of cellular processes, including cell cycle progression, signal transduction, apoptosis, and gene regulation. Three transcript variants encoding two different isoforms have been found for this gene.

Synonyms:

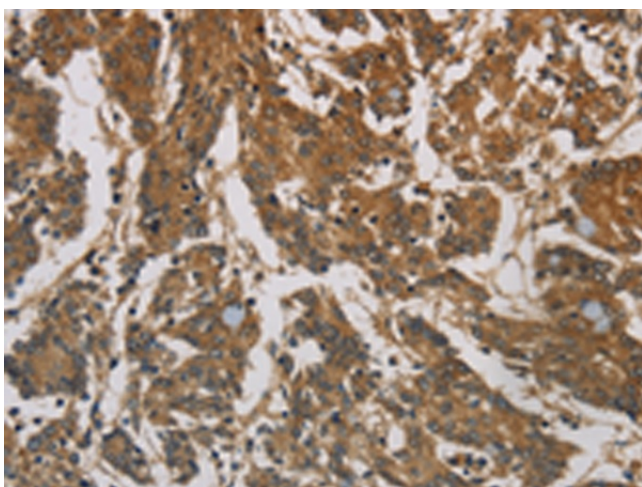
HCRNN4

Product images:


Gel: 8%SDS-PAGE
 Lysate: 40 μ g
 Lane: Lovo cells
 Primary antibody: TA349821 (CORO1C Antibody) at dilution 1/670
 Secondary antibody: Goat anti rabbit IgG at 1/8000 dilution
 Exposure time: 40 seconds



Immunohistochemistry of paraffin-embedded Human liver cancer tissue using TA349821 (CORO1C Antibody) at dilution 1/60. (Original magnification: \times 200)



Immunohistochemistry of paraffin-embedded Human colon cancer tissue using TA349821 (CORO1C Antibody) at dilution 1/60. (Original magnification: $\times 200$)