

Product datasheet for **TA349820**

COMP Rabbit Polyclonal Antibody

Product data:

Product Type:	Primary Antibodies
Applications:	IHC, WB
Recommended Dilution:	WB: 500-2000 WB positive control: PC3 and Hela cells IHC: 50-200 Positive control: Human thyroid cancer Predicted cell location: Cytoplasm
Reactivity:	Human, Mouse, Rat
Host:	Rabbit
Isotype:	IgG
Clonality:	Polyclonal
Immunogen:	Fusion protein of human COMP
Formulation:	pH7.4 PBS, 0.05% NaN ₃ , 40% Glycerol
Concentration:	lot specific
Purification:	Antigen affinity purification
Conjugation:	Unconjugated
Storage:	Store at -20°C as received.
Stability:	Stable for 12 months from date of receipt.
Predicted Protein Size:	83 kDa
Gene Name:	cartilage oligomeric matrix protein
Database Link:	NP_000086 Entrez Gene 12845 Mouse Entrez Gene 25304 Rat Entrez Gene 1311 Human P49747



[View online »](#)

Background:

The protein encoded by this gene is a noncollagenous extracellular matrix (ECM) protein. It consists of five identical glycoprotein subunits, each with EGF-like and calcium-binding (thrombospondin-like) domains. Oligomerization results from formation of a five-stranded coiled coil and disulfides. Binding to other ECM proteins such as collagen appears to depend on divalent cations. Mutations can cause the osteochondrodysplasias pseudochondroplasia (PSACH) and multiple epiphyseal dysplasia (MED).

Synonyms:

EDM1; EPD1; MED; PSACH; THBS5

Protein Families:

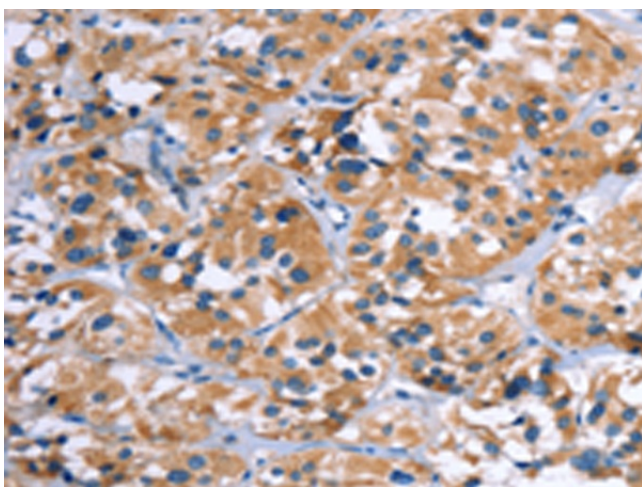
Druggable Genome, Secreted Protein

Protein Pathways:

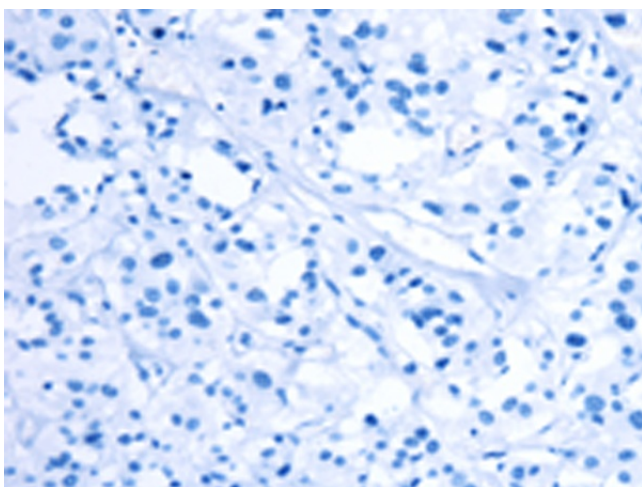
ECM-receptor interaction, Focal adhesion, TGF-beta signaling pathway

Product images:

Gel: 6%SDS-PAGE
Lysate: 40 μ g
Lane 1-2: PC3 cells
Hela cells
Primary antibody: TA349820 (COMP Antibody) at dilution 1/600
Secondary antibody: Goat anti rabbit IgG at 1/8000 dilution
Exposure time: 10 seconds



Immunohistochemistry of paraffin-embedded Human thyroid cancer tissue using TA349820 (COMP Antibody) at dilution 1/50 (Original magnification: \times 200)



Immunohistochemistry of paraffin-embedded Human thyroid cancer tissue using TA349820 (COMP Antibody) at dilution 1/50, treated with fusion protein. (Original magnification: ×200)