

Product datasheet for **TA349816**

Cofilin 1 (CFL1) Rabbit Polyclonal Antibody

Product data:

Product Type:	Primary Antibodies
Applications:	WB
Recommended Dilution:	WB: 500-2000 WB positive control: Raji cells
Reactivity:	Human, Mouse, Rat
Host:	Rabbit
Isotype:	IgG
Clonality:	Polyclonal
Immunogen:	Fusion protein of human CFL1
Formulation:	pH7.4 PBS, 0.05% NaN ₃ , 40% Glycerol
Concentration:	lot specific
Purification:	Antigen affinity purification
Conjugation:	Unconjugated
Storage:	Store at -20°C as received.
Stability:	Stable for 12 months from date of receipt.
Predicted Protein Size:	19 kDa
Gene Name:	cofilin 1
Database Link:	NP_005498 Entrez Gene 12631 MouseEntrez Gene 29271 RatEntrez Gene 1072 Human P23528
Background:	The protein encoded by this gene can polymerize and depolymerize F-actin and G-actin in a pH-dependent manner. Increased phosphorylation of this protein by LIM kinase aids in Rho-induced reorganization of the actin cytoskeleton. Cofilin is a widely distributed intracellular actin-modulating protein that binds and depolymerizes filamentous F-actin and inhibits the polymerization of monomeric G-actin in a pH-dependent manner. It is involved in the translocation of actin-cofilin complex from cytoplasm to nucleus.
Synonyms:	CFL; HEL-S-15

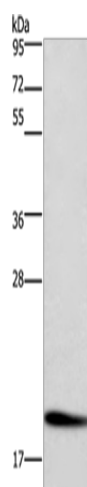


[View online »](#)

Protein Families: Druggable Genome

Protein Pathways: Axon guidance, Fc gamma R-mediated phagocytosis, Regulation of actin cytoskeleton

Product images:



Gel: 10%SDS-PAGE

Lysate: 40 μ g

Lane: Raji cells

Primary antibody: TA349816 (CFL1 Antibody) at dilution 1/600

Secondary antibody: Goat anti rabbit IgG at 1/8000 dilution

Exposure time: 20 seconds