

Product datasheet for **TA349815**

CNTROB Rabbit Polyclonal Antibody

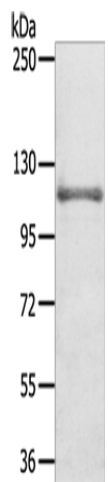
Product data:

Product Type:	Primary Antibodies
Applications:	WB
Recommended Dilution:	WB: 200-1000 WB positive control: Mouse kidney tissue
Reactivity:	Human, Mouse
Host:	Rabbit
Isotype:	IgG
Clonality:	Polyclonal
Immunogen:	Fusion protein of human CNTROB
Formulation:	pH7.4 PBS, 0.05% NaN ₃ , 40% Glycerol
Concentration:	lot specific
Purification:	Antigen affinity purification
Conjugation:	Unconjugated
Storage:	Store at -20°C as received.
Stability:	Stable for 12 months from date of receipt.
Predicted Protein Size:	101 kDa
Gene Name:	centrobin, centriole duplication and spindle assembly protein
Database Link:	NP_444279 Entrez Gene 216846 MouseEntrez Gene 116840 Human Q8N137
Background:	This gene encodes a centrosomal protein that interacts with BRCA2, and is required for centriole duplication and cytokinesis. Alternatively spliced transcript variants encoding different isoforms have been described for this gene.
Synonyms:	LIP8; PP1221



[View online »](#)

Product images:



Gel: 6%SDS-PAGE

Lysate: 40 μ g

Lane: Mouse kidney tissue

Primary antibody: TA349815 (CNTROB Antibody)
at dilution 1/250

Secondary antibody: Goat anti rabbit IgG at
1/8000 dilution

Exposure time: 40 seconds