

## Product datasheet for **TA349814**

### CNDP1 Rabbit Polyclonal Antibody

#### Product data:

Product Type:	Primary Antibodies
Applications:	IHC, WB
Recommended Dilution:	WB: 500-2000 WB positive control: 293T cells IHC: 50-200 Positive control: Human gastric cancer Predicted cell location: Cytoplasm
Reactivity:	Human, Mouse, Rat
Host:	Rabbit
Isotype:	IgG
Clonality:	Polyclonal
Immunogen:	Fusion protein of human CNDP1
Formulation:	pH7.4 PBS, 0.05% NaN <sub>3</sub> , 40% Glycerol
Concentration:	lot specific
Purification:	Antigen affinity purification
Conjugation:	Unconjugated
Storage:	Store at -20°C as received.
Stability:	Stable for 12 months from date of receipt.
Predicted Protein Size:	57 kDa
Gene Name:	carnosine dipeptidase 1
Database Link:	<a href="#">NP_116038</a> <a href="#">Entrez Gene 307212 Rat</a> <a href="#">Entrez Gene 338403 Mouse</a> <a href="#">Entrez Gene 84735 Human</a> <a href="#">Q96KN2</a>
Background:	This gene encodes a member of the M20 metalloprotease family. The encoded protein is specifically expressed in the brain, is a homodimeric dipeptidase which was identified as human carnosinase. This gene contains trinucleotide (CTG) repeat length polymorphism in the coding region.
Synonyms:	CN1; CPGL2; HsT2308

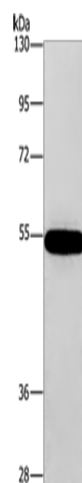


[View online »](#)

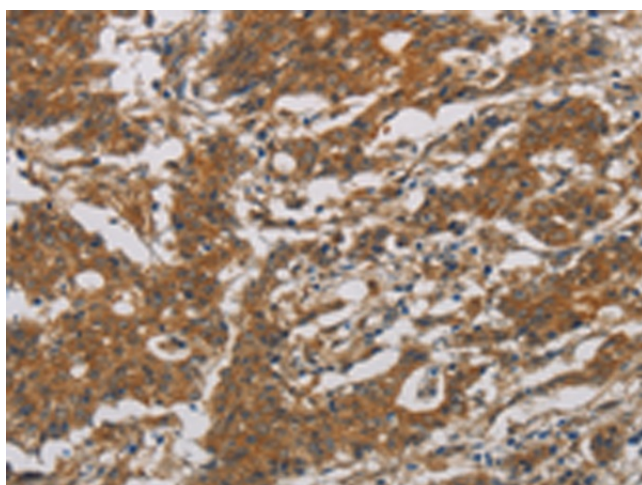
**Protein Families:** Protease, Secreted Protein

**Protein Pathways:** beta-Alanine metabolism, Histidine metabolism, Metabolic pathways

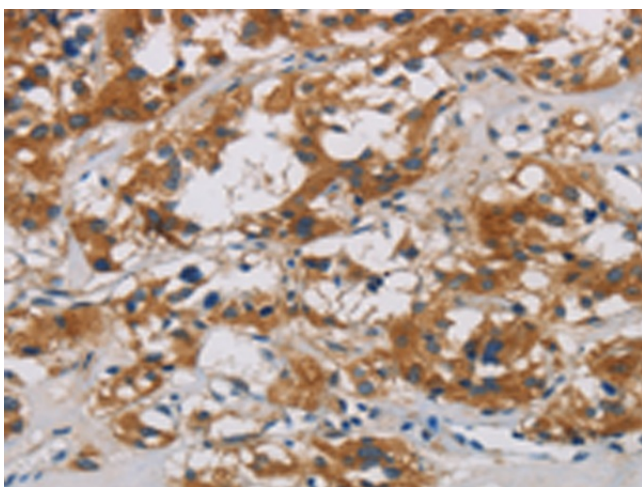
**Product images:**



Gel: 8%SDS-PAGE  
Lysate: 40 µg  
Lane: 293T cells  
Primary antibody: TA349814 (CNDP1 Antibody) at dilution 1/320  
Secondary antibody: Goat anti rabbit IgG at 1/8000 dilution  
Exposure time: 10 seconds



Immunohistochemistry of paraffin-embedded Human gastric cancer tissue using TA349814 (CNDP1 Antibody) at dilution 1/30. (Original magnification: ×200)



Immunohistochemistry of paraffin-embedded Human thyroid cancer tissue using TA349814 (CNDP1 Antibody) at dilution 1/30. (Original magnification: x200)