

Product datasheet for **TA349809**

PLEKHO1 Rabbit Polyclonal Antibody

Product data:

Product Type:	Primary Antibodies
Applications:	IHC, WB
Recommended Dilution:	WB: 200-1000 WB positive control: Hela cells, mouse muscle and kidney tissue IHC: 100-300 Positive control: Human thyroid cancer Predicted cell location: Cytoplasm
Reactivity:	Human, Mouse, Rat
Host:	Rabbit
Isotype:	IgG
Clonality:	Polyclonal
Immunogen:	Fusion protein of human PLEKHO1
Formulation:	pH7.4 PBS, 0.05% NaN ₃ , 40% Glycerol
Concentration:	lot specific
Purification:	Antigen affinity purification
Conjugation:	Unconjugated
Storage:	Store at -20°C as received.
Stability:	Stable for 12 months from date of receipt.
Predicted Protein Size:	46 kDa
Gene Name:	pleckstrin homology domain containing O1
Database Link:	NP_057358 Entrez Gene 67220 Mouse Entrez Gene 310674 Rat Entrez Gene 51177 Human Q53GL0



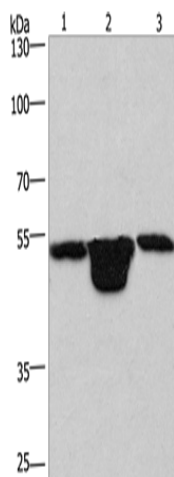
[View online »](#)

Background:

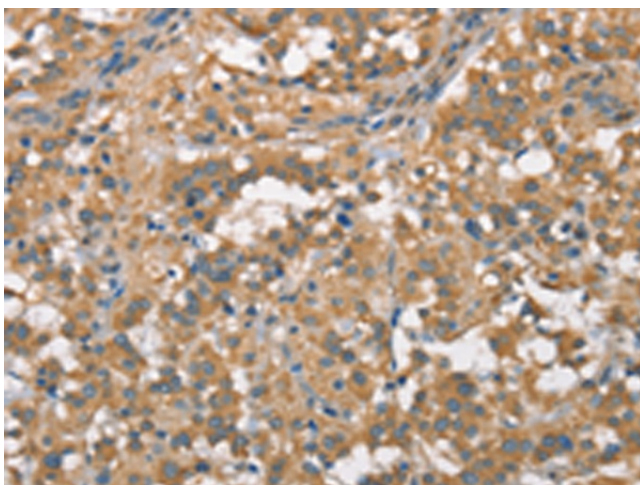
Pleckstrin homology domain-containing family O member 1 is a protein that in humans is encoded by the PLEKHO1 gene. Plays a role in the regulation of the actin cytoskeleton through its interactions with actin capping protein (CP). May function to target CK2 to the plasma membrane thereby serving as an adapter to facilitate the phosphorylation of CP by protein kinase 2 (CK2). Appears to target ATM to the plasma membrane. Appears to also inhibit tumor cell growth by inhibiting AKT-mediated cell-survival.

Synonyms:

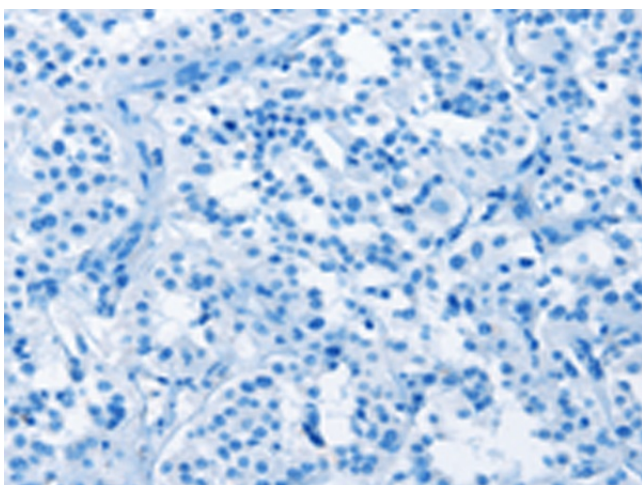
CKIP-1; CKIP1; JBP; OC120

Product images:

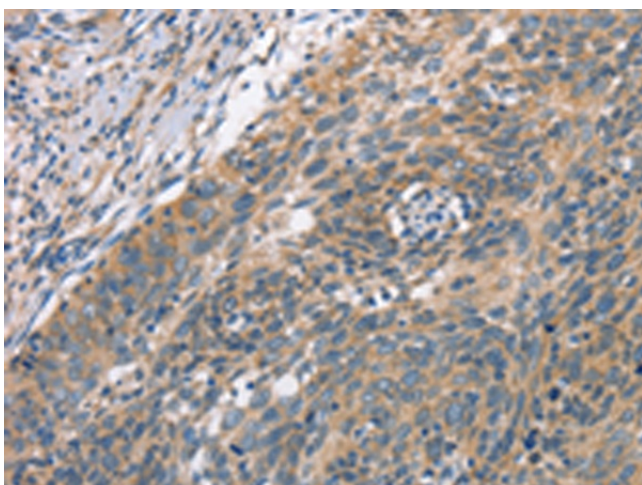
Gel: 8%SDS-PAGE
Lysate: 40 μ g
Lane 1-3: HeLa cells
mouse muscle tissue
Mouse kidney tissue
Primary antibody: TA349809 (PLEKHO1 Antibody)
at dilution 1/200
Secondary antibody: Goat anti rabbit IgG at
1/8000 dilution
Exposure time: 1 minute



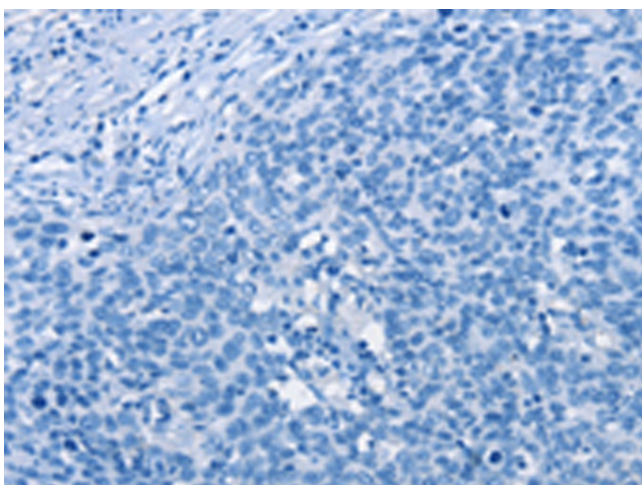
Immunohistochemistry of paraffin-embedded
Human thyroid cancer tissue using TA349809
(PLEKHO1 Antibody) at dilution 1/70 (Original
magnification: \times 200)



Immunohistochemistry of paraffin-embedded Human thyroid cancer tissue using TA349809 (PLEKHO1 Antibody) at dilution 1/70, treated with fusion protein. (Original magnification: $\times 200$)



Immunohistochemistry of paraffin-embedded Human cervical cancer tissue using TA349809 (PLEKHO1 Antibody) at dilution 1/70 (Original magnification: $\times 200$)



Immunohistochemistry of paraffin-embedded Human cervical cancer tissue using TA349809 (PLEKHO1 Antibody) at dilution 1/70, treated with fusion protein. (Original magnification: $\times 200$)