

Product datasheet for **TA349808**

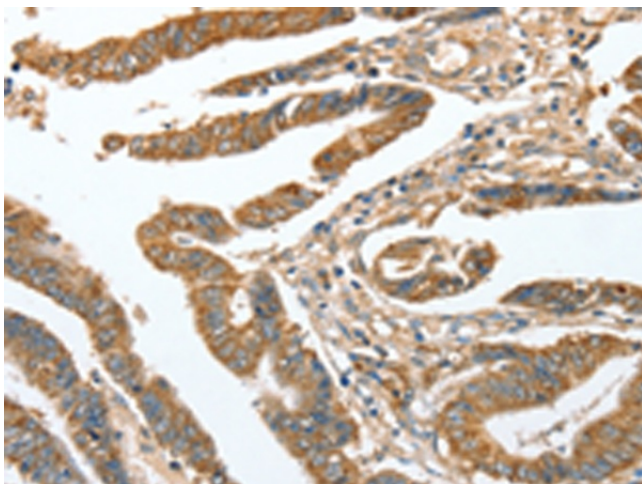
CKAP2 Rabbit Polyclonal Antibody

Product data:

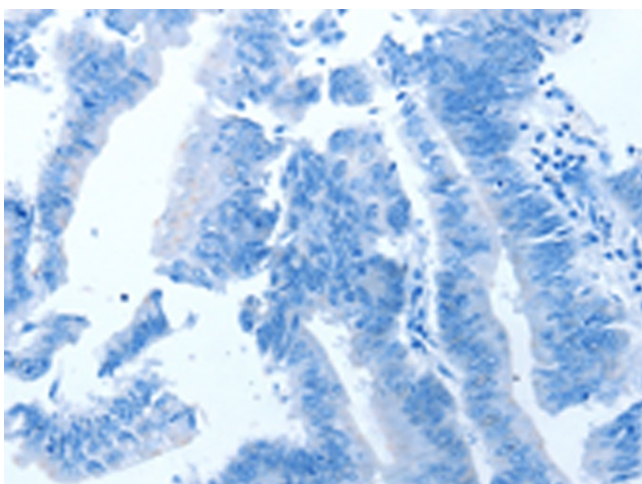
Product Type:	Primary Antibodies
Applications:	IHC
Recommended Dilution:	IHC: 50-200 Positive control: Human colon cancer Predicted cell location: Cytoplasm
Reactivity:	Human
Host:	Rabbit
Isotype:	IgG
Clonality:	Polyclonal
Immunogen:	Fusion protein of human CKAP2
Formulation:	pH7.4 PBS, 0.05% NaN3, 40% GlycerolIn
Concentration:	lot specific
Purification:	Antigen affinity purification
Conjugation:	Unconjugated
Storage:	Store at -20°C as received.
Stability:	Stable for 12 months from date of receipt.
Gene Name:	cytoskeleton associated protein 2
Database Link:	NP_060674 Entrez Gene 26586 Human Q8WWK9
Background:	This gene encodes a cytoskeleton-associated protein that stabilizes microtubules and plays a role in the regulation of cell division. The encoded protein is itself regulated through phosphorylation at multiple serine and threonine residues. There is a pseudogene of this gene on chromosome 14. Alternative splicing results in multiple transcript variations.
Synonyms:	LB1; se20-10; TMAP
Protein Families:	Druggable Genome



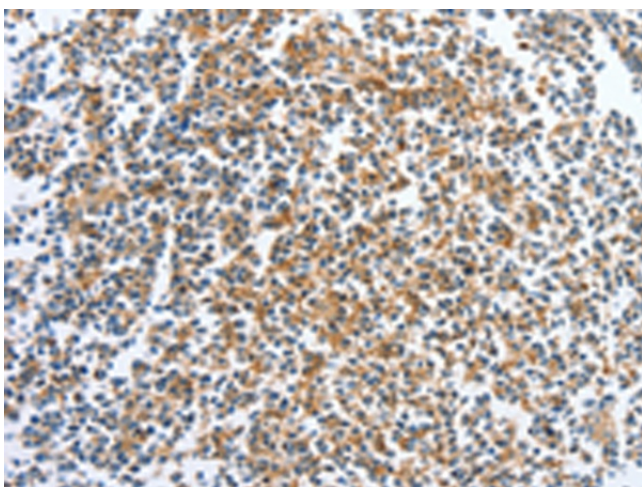
[View online »](#)

Product images:

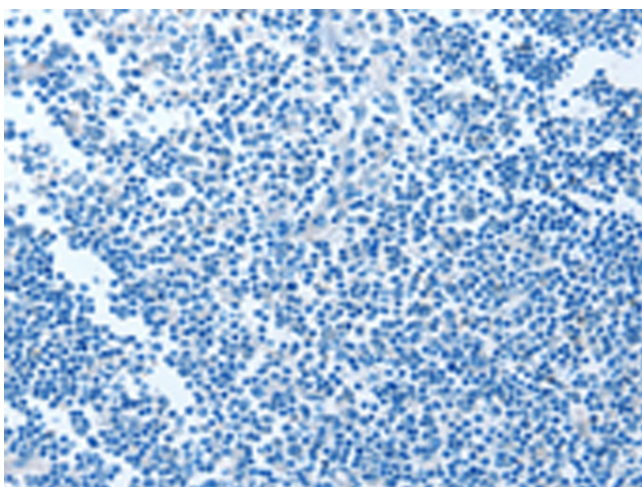
Immunohistochemistry of paraffin-embedded Human colon cancer tissue using TA349808 (CKAP2 Antibody) at dilution 1/70 (Original magnification: $\times 200$)



Immunohistochemistry of paraffin-embedded Human colon cancer tissue using TA349808 (CKAP2 Antibody) at dilution 1/70, treated with fusion protein. (Original magnification: $\times 200$)



Immunohistochemistry of paraffin-embedded Human tonsil tissue using TA349808 (CKAP2 Antibody) at dilution 1/70 (Original magnification: ×200)



Immunohistochemistry of paraffin-embedded Human tonsil tissue using TA349808 (CKAP2 Antibody) at dilution 1/70, treated with fusion protein. (Original magnification: ×200)