

Product datasheet for **TA349807**

p90 Autoantigen (KIAA1524) Rabbit Polyclonal Antibody

Product data:

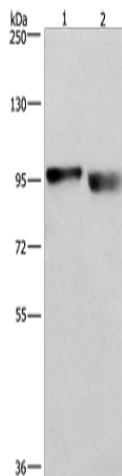
| | |
|-------------------------|---|
| Product Type: | Primary Antibodies |
| Applications: | WB |
| Recommended Dilution: | WB: 500-2000 WB positive control: A431 and lovo cells |
| Reactivity: | Human, Mouse |
| Host: | Rabbit |
| Isotype: | IgG |
| Clonality: | Polyclonal |
| Immunogen: | Fusion protein of human KIAA1524 |
| Formulation: | pH7.4 PBS, 0.05% NaN ₃ , 40% Glycerol |
| Concentration: | lot specific |
| Purification: | Antigen affinity purification |
| Conjugation: | Unconjugated |
| Storage: | Store at -20°C as received. |
| Stability: | Stable for 12 months from date of receipt. |
| Predicted Protein Size: | 102 kDa |
| Gene Name: | KIAA1524 |
| Database Link: | NP_065941 Entrez Gene 57650 Human Q8TCG1 |
| Background: | Protein CIP2A also known as cancerous inhibitor of PP2A (CIP2A) is a protein that in humans is encoded by the KIAA1524 gene. Protein phosphatase 2A (PP2A) is a cellular tumor suppressor which inhibits cell proliferation and transformation of normal cells to malignant cancer cells. Inhibition of PP2A activity is a prerequisite for human cell transformation. However, the in vivo mechanisms by which PP2A activity is inhibited in spontaneously transformed human cancer cells have been unclear. |
| Synonyms: | CIP2A; p90 |



[View online »](#)

Protein Families: Druggable Genome

Product images:



Gel: 6%SDS-PAGE

Lysate: 40 μ g

Lane 1-2: A431 cells
lovo cells

Primary antibody: TA349807 (CIP2A Antibody) at
dilution 1/597

Secondary antibody: Goat anti rabbit IgG at
1/8000 dilution

Exposure time: 1 second