

## Product datasheet for **TA349806**

### CIDE C (CIDE C) Rabbit Polyclonal Antibody

#### Product data:

|                         |  |
|-------------------------|--|
| Product Type:           | Primary Antibodies   |
| Applications:           | IHC, WB  |
| Recommended Dilution:   | WB: 500-2000<br>WB positive control: Mouse fetal tissue, LOVO cell, HT-29 cell lysates<br>IHC: 50-100<br>Positive control: Human colorectal cancer<br>Predicted cell location: Cytoplasm |
| Reactivity:             | Human, Mouse, Rat  |
| Host:                   | Rabbit   |
| Isotype:                | IgG  |
| Clonality:              | Polyclonal   |
| Immunogen:              | Fusion protein of human CIDE C   |
| Formulation:            | pH7.4 PBS, 0.05% NaN <sub>3</sub> , 40% Glycerol   |
| Concentration:          | lot specific   |
| Purification:           | Antigen affinity purification  |
| Conjugation:            | Unconjugated   |
| Storage:                | Store at -20°C as received.  |
| Stability:              | Stable for 12 months from date of receipt.   |
| Predicted Protein Size: | 27 kDa   |
| Gene Name:              | cell death inducing DFFA like effector c   |
| Database Link:          | <a href="#">NP_071377</a><br><a href="#">Entrez Gene 63924 Human</a><br><a href="#">Q96AQ7</a>   |



[View online »](#)

**Background:**

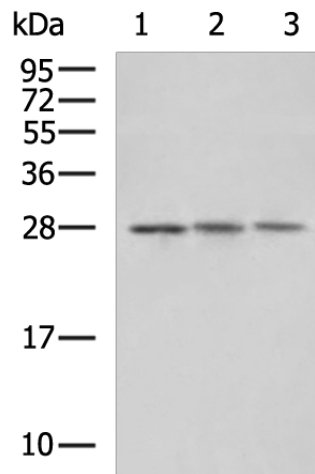
This gene encodes a member of the cell death-inducing DNA fragmentation factor-like effector family. Members of this family play important roles in apoptosis. The encoded protein promotes lipid droplet formation in adipocytes and may mediate adipocyte apoptosis. This gene is regulated by insulin and its expression is positively correlated with insulin sensitivity. Mutations in this gene may contribute to insulin resistant diabetes. A pseudogene of this gene is located on the short arm of chromosome 3. Alternatively spliced transcript variants that encode different isoforms have been observed for this gene.

**Synonyms:**

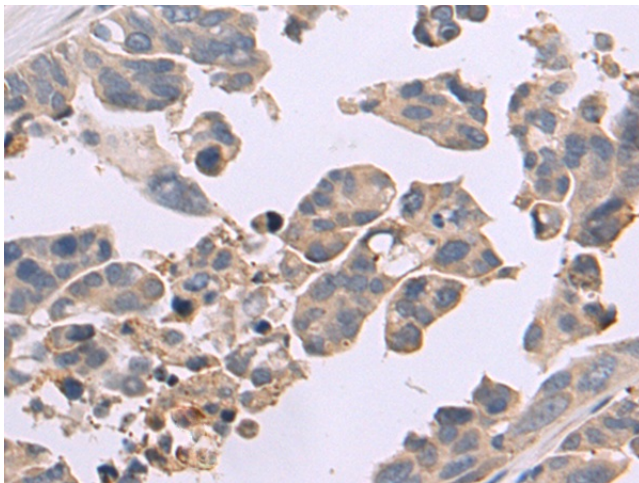
CIDE-3; CIDE3; FPLD5; FSP27

**Protein Families:**

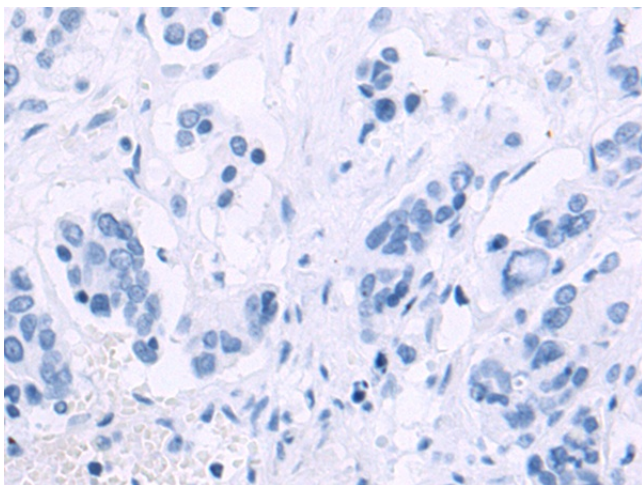
Druggable Genome

**Product images:**

Gel: 12%SDS-PAGE  
Lysate: 40 µg  
Lane 1-3: Mouse fetal tissue  
LOVO cell  
HT-29 cell lysates  
Primary antibody: TA349806 (CIDE C Antibody) at dilution 1/300  
Secondary antibody: Goat anti rabbit IgG at 1/5000 dilution  
Exposure time: 10 seconds



Immunohistochemistry of paraffin-embedded Human colorectal cancer tissue using TA349806 (CIDE C Antibody) at dilution 1/50 (Original magnification: ×200)



Immunohistochemistry of paraffin-embedded Human colorectal cancer tissue using TA349806 (CIDE C Antibody) at dilution 1/50, treated with fusion protein. (Original magnification: ×200)