

## Product datasheet for **TA349802**

### CHMP1A Rabbit Polyclonal Antibody

#### Product data:

Product Type:	Primary Antibodies
Applications:	IHC, WB
Recommended Dilution:	WB: 500-2000 WB positive control: Mouse lung tissue IHC: 50-200 Positive control: Human gastric cancer Predicted cell location: Cytoplasm
Reactivity:	Human, Mouse
Host:	Rabbit
Isotype:	IgG
Clonality:	Polyclonal
Immunogen:	Fusion protein of human CHMP1A
Formulation:	pH7.4 PBS, 0.05% NaN <sub>3</sub> , 40% Glycerol
Concentration:	lot specific
Purification:	Antigen affinity purification
Conjugation:	Unconjugated
Storage:	Store at -20°C as received.
Stability:	Stable for 12 months from date of receipt.
Predicted Protein Size:	22 kDa
Gene Name:	charged multivesicular body protein 1A
Database Link:	<a href="#">NP_002759</a> <a href="#">Entrez Gene 5119 Human</a> <a href="#">Q9HD42</a>



[View online »](#)

**Background:**

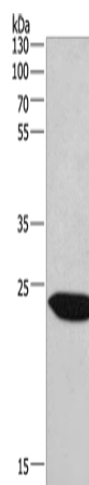
This gene encodes a member of the CHMP/Chmp family of proteins which are involved in multivesicular body sorting of proteins to the interiors of lysosomes. The initial prediction of the protein sequence encoded by this gene suggested that the encoded protein was a metallopeptidase. The nomenclature has been updated recently to reflect the correct biological function of this encoded protein. Several transcripts encoding different isoforms have been found for this gene.

**Synonyms:**

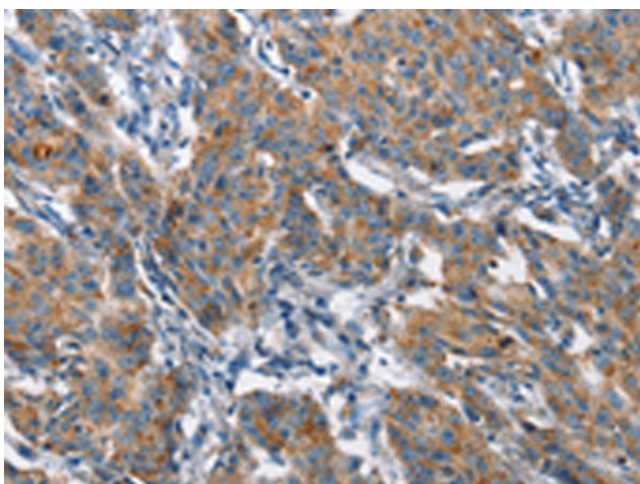
CHMP1; PCH8; PCOLN3; PRSM1; VPS46-1; VPS46A

**Protein Families:**

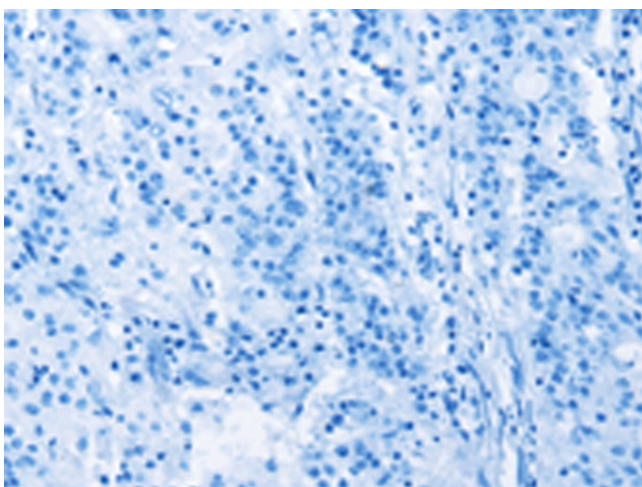
Druggable Genome, Transcription Factors

**Product images:**

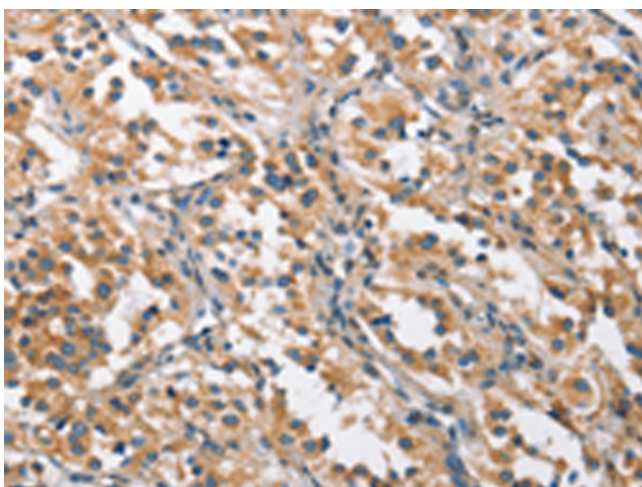
Gel: 12%SDS-PAGE  
Lysate: 40 µg  
Lane: Mouse lung tissue  
Primary antibody: TA349802 (CHMP1A Antibody) at dilution 1/530  
Secondary antibody: Goat anti rabbit IgG at 1/8000 dilution  
Exposure time: 40 seconds



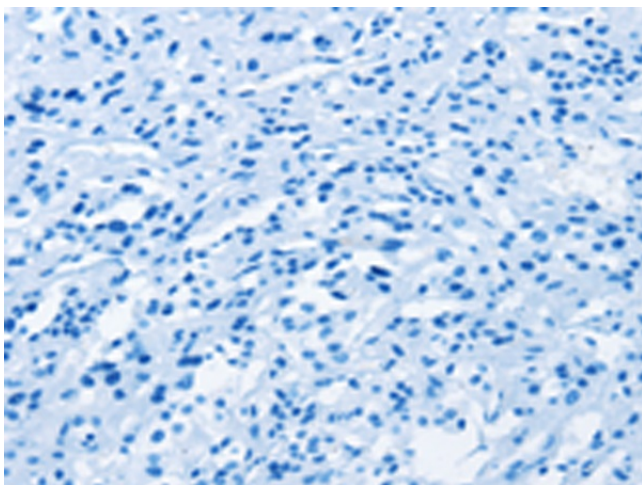
Immunohistochemistry of paraffin-embedded Human gastric cancer tissue using TA349802 (CHMP1A Antibody) at dilution 1/60 (Original magnification: ×200)



Immunohistochemistry of paraffin-embedded Human gastric cancer tissue using TA349802 (CHMP1A Antibody) at dilution 1/60, treated with fusion protein. (Original magnification:  $\times 200$ )



Immunohistochemistry of paraffin-embedded Human thyroid cancer tissue using TA349802 (CHMP1A Antibody) at dilution 1/60 (Original magnification:  $\times 200$ )



Immunohistochemistry of paraffin-embedded Human thyroid cancer tissue using TA349802 (CHMP1A Antibody) at dilution 1/60, treated with fusion protein. (Original magnification:  $\times 200$ )