

## Product datasheet for **TA349800**

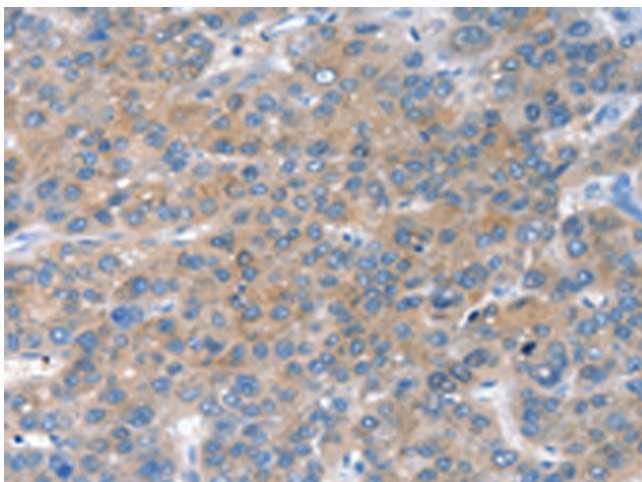
### CHAC1 Rabbit Polyclonal Antibody

#### Product data:

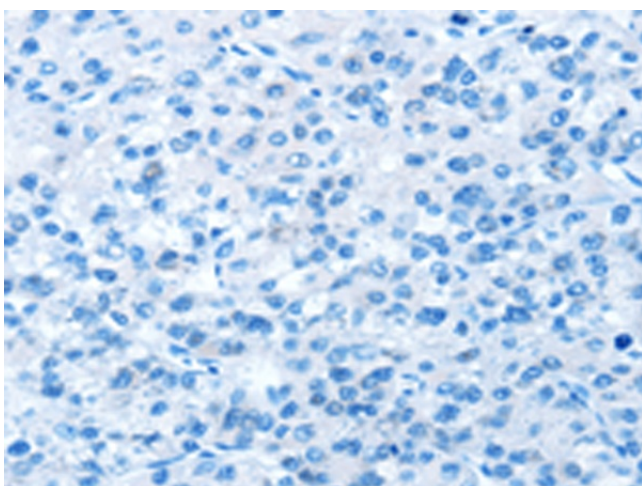
Product Type:	Primary Antibodies
Applications:	IHC
Recommended Dilution:	IHC: 25-100 Positive control: Human liver cancer Predicted cell location: Cytoplasm
Reactivity:	Human, Mouse, Rat
Host:	Rabbit
Isotype:	IgG
Clonality:	Polyclonal
Immunogen:	Fusion protein of human CHAC1
Formulation:	pH7.4 PBS, 0.05% NaN <sub>3</sub> , 40% Glycerol
Concentration:	lot specific
Purification:	Antigen affinity purification
Conjugation:	Unconjugated
Storage:	Store at -20°C as received.
Stability:	Stable for 12 months from date of receipt.
Gene Name:	ChaC glutathione specific gamma-glutamylcyclotransferase 1
Database Link:	<a href="#">NP_077016</a> <a href="#">Entrez Gene 79094 Human</a> <a href="#">Q9BUX1</a>
Background:	CHAC1 (ChaC, cation transport regulator homolog 1 (E. coli)) is a 264 amino acid cytoplasmic protein that belongs to the ChaC family. Induced by chemical activators of the unfolded protein response (UPR) pathway, including DTT, tunicamycin and thapsigargin, CHAC1 is a pro-apoptotic member of this pathway and may mediate the pro-apoptotic effects of the ATF4-ATF3-DDIT3/CHOP cascade. Overexpression of CHAC1 may lead to an increase in apoptosis, while suppression of CHAC1 results in subdued apoptosis.
Synonyms:	MGC4504



[View online »](#)

**Product images:**

Immunohistochemistry of paraffin-embedded Human liver cancer tissue using TA349800 (CHAC1 Antibody) at dilution 1/40 (Original magnification:  $\times 200$ )



Immunohistochemistry of paraffin-embedded Human liver cancer tissue using TA349800 (CHAC1 Antibody) at dilution 1/40, treated with fusion protein. (Original magnification:  $\times 200$ )