

## Product datasheet for **TA349797S**

### CEP97 Rabbit Polyclonal Antibody

#### Product data:

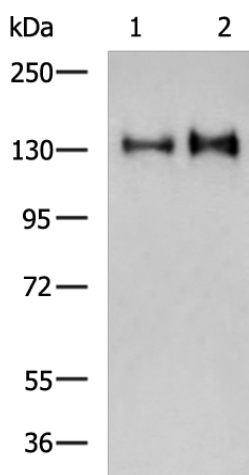
Product Type:	Primary Antibodies
Applications:	IHC, WB
Recommended Dilution:	WB: 500-2000 WB positive control: 293T and Hela cell lysates IHC: 50-100 Positive control: Human breast cancer Predicted cell location: Cytoplasm
Reactivity:	Human
Host:	Rabbit
Isotype:	IgG
Clonality:	Polyclonal
Immunogen:	Fusion protein of human CEP97
Formulation:	pH7.4 PBS, 0.05% NaN <sub>3</sub> , 40% Glycerol
Purification:	Antigen affinity purification
Conjugation:	Unconjugated
Storage:	Store at -20°C as received.
Stability:	Stable for 12 months from date of receipt.
Predicted Protein Size:	97 kDa
Gene Name:	centrosomal protein 97
Database Link:	<a href="#">NP_078824</a> <a href="#">Entrez Gene 79598 Human</a> <a href="#">Q8IW35</a>

**Background:** Centrosomal protein of 97 kDa (Cep97), also known as leucine-rich repeat and IQ domain-containing protein 2 (LRRIQ2), is a protein that in humans is encoded by the CEP97 gene. Acts as a key negative regulator of ciliogenesis in collaboration with CCP110 by capping the mother centriole thereby preventing cilia formation. Required for recruitment of CCP110 to the centrosome. Interacts with CALM1, CEP76 and CCP110. Via its interaction with CCP110, may indirectly interact with HERC2 and NEURL4. Interacts with KIF24.

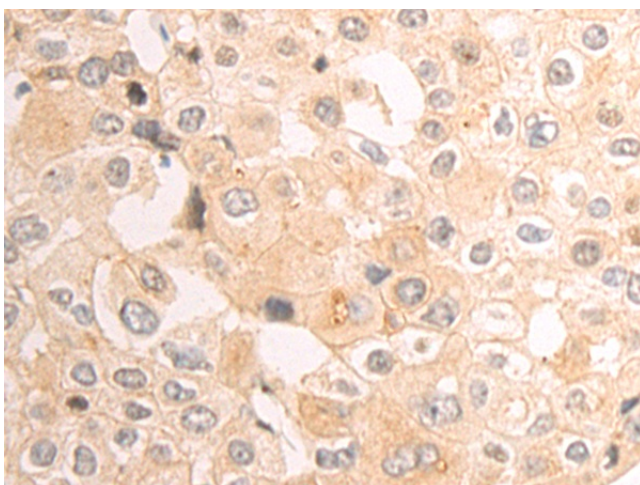

[View online »](#)

Synonyms: 2810403B08Rik; LRRIQ2

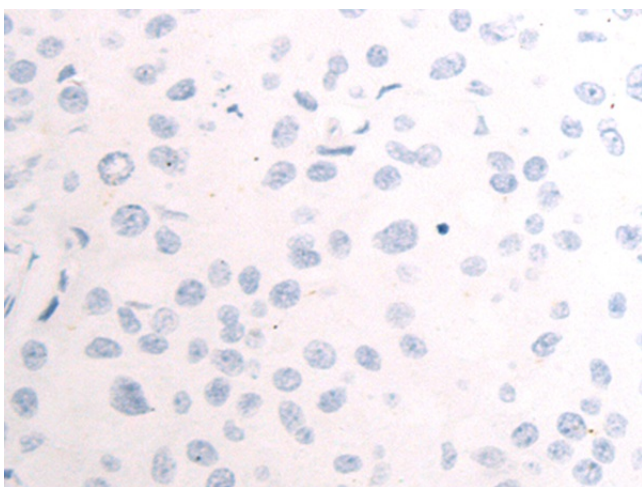
## Product images:



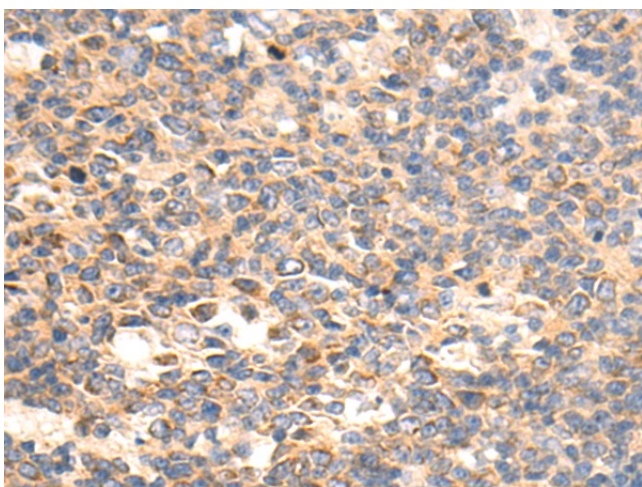
Gel: 6%SDS-PAGE  
Lysate: 40 µg  
Lane 1-2: 293T and Hela cell lysates  
Primary antibody: [TA349797] (CEP97 Antibody)  
at dilution 1/250  
Secondary antibody: Goat anti rabbit IgG at  
1/5000 dilution  
Exposure time: 7 seconds



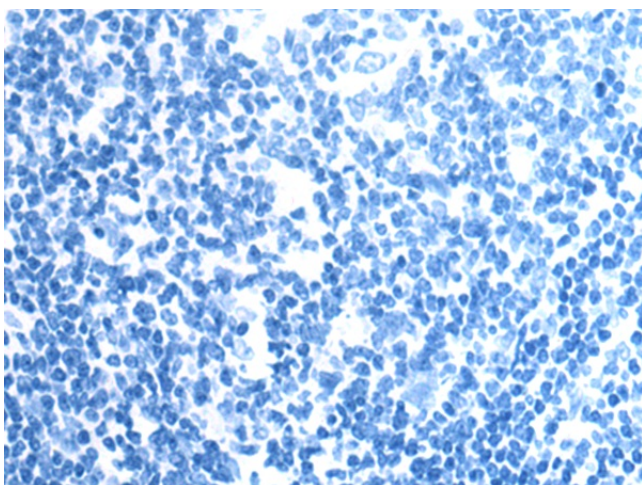
Immunohistochemistry of paraffin-embedded  
Human breast cancer tissue using [TA349797]  
(CEP97 Antibody) at dilution 1/50 (Original  
magnification: ×200)



Immunohistochemistry of paraffin-embedded Human breast cancer tissue using [TA349797] (CEP97 Antibody) at dilution 1/50, treated with fusion protein. (Original magnification: ×200)



Immunohistochemistry of paraffin-embedded Human tonsil tissue using [TA349797] (CEP97 Antibody) at dilution 1/50 (Original magnification: ×200)



Immunohistochemistry of paraffin-embedded Human tonsil tissue using [TA349797] (CEP97 Antibody) at dilution 1/50, treated with fusion protein. (Original magnification: ×200)