

## Product datasheet for **TA349796**

### CEP55 Rabbit Polyclonal Antibody

#### Product data:

Product Type:	Primary Antibodies
Applications:	WB
Recommended Dilution:	WB: 200-1000 WB positive control: Hela cells
Reactivity:	Human, Rat
Host:	Rabbit
Isotype:	IgG
Clonality:	Polyclonal
Immunogen:	Fusion protein of human CEP55
Formulation:	pH7.4 PBS, 0.05% NaN <sub>3</sub> , 40% Glycerol
Concentration:	lot specific
Purification:	Antigen affinity purification
Conjugation:	Unconjugated
Storage:	Store at -20°C as received.
Stability:	Stable for 12 months from date of receipt.
Predicted Protein Size:	54 kDa
Gene Name:	centrosomal protein 55
Database Link:	<a href="#">NP_060601</a> <a href="#">Entrez Gene 294074 Rat</a> <a href="#">Entrez Gene 55165 Human</a> <a href="#">Q53EZ4</a>

**Background:** Centrosomal protein of 55 kDa is a protein that in humans is encoded by the CEP55 gene. CEP55 is a mitotic phosphoprotein that plays a key role in cytokinesis, the final stage of cell division. Interacts (phosphorylated on Ser-425 and Ser-428) with PLK1. Interacts with AKAP9; the interaction occurs in interphase and is lost upon mitotic entry. Interacts with PCNT; the interaction occurs in interphase and is lost upon mitotic entry. Interacts with PDCD6IP; the interaction is direct; CEP55 binds PDCD6IP in a 2:1 stoichiometry; PDCD6IP competes with TSG101 for the same binding site.

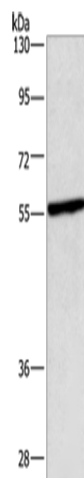
**Synonyms:** C10orf3; CT111; URCC6



[View online »](#)

Protein Families: Druggable Genome

### Product images:



Gel: 10%SDS-PAGE  
Lysate: 40  $\mu$ g  
Lane: Hela cells  
Primary antibody: TA349796 (CEP55 Antibody) at dilution 1/550  
Secondary antibody: Goat anti rabbit IgG at 1/8000 dilution  
Exposure time: 3 minutes