

## Product datasheet for **TA349792S**

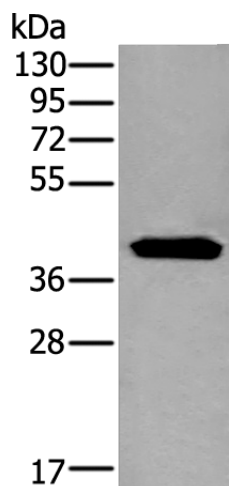
### CENPN Rabbit Polyclonal Antibody

#### Product data:

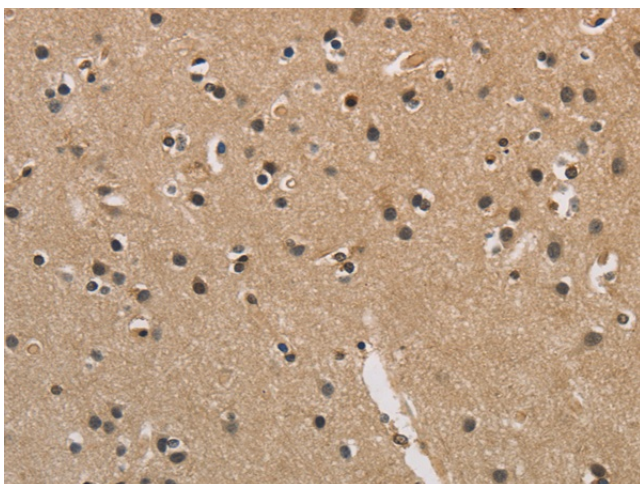
Product Type:	Primary Antibodies
Applications:	IHC, WB
Recommended Dilution:	WB: 1000-5000 WB positive control: Human left kidney tissue lysate IHC: 100-300 Positive control: Human brain Predicted cell location: Nucleus and Cytoplasm
Reactivity:	Human
Host:	Rabbit
Isotype:	IgG
Clonality:	Polyclonal
Immunogen:	Fusion protein of human CENPN
Formulation:	pH7.4 PBS, 0.05% NaN <sub>3</sub> , 40% Glycerol
Purification:	Antigen affinity purification
Conjugation:	Unconjugated
Storage:	Store at -20°C as received.
Stability:	Stable for 12 months from date of receipt.
Gene Name:	centromere protein N
Database Link:	<a href="#">NP_060925</a> <a href="#">Entrez Gene 55839 Human</a> <a href="#">Q96H22</a>
Background:	The protein encoded by this gene forms part of the nucleosome-associated complex and is important for kinetochore assembly. It is bound to kinetochores during S phase and G2 and recruits other proteins to the centromere. Pseudogenes of this gene are located on chromosome 2. Alternative splicing results in multiple transcript variants that encode different protein isoforms.
Synonyms:	BM039; C16orf60; CENP-N; ICEN32
Protein Families:	Druggable Genome

[View online »](#)

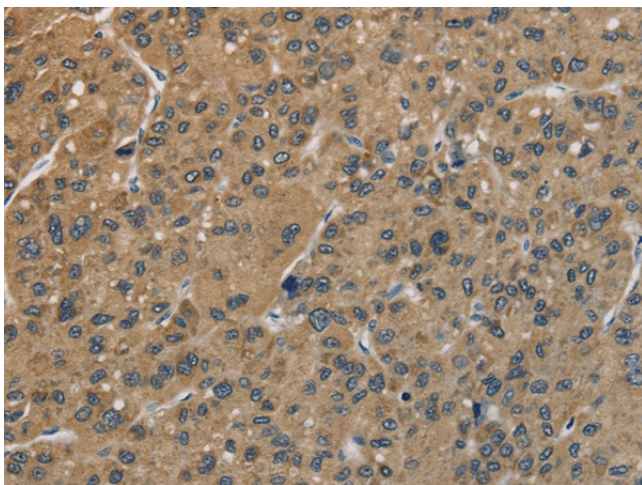
## Product images:



Gel: 8%SDS-PAGE  
 Lysate: 40 µg  
 Lane: Human left kidney tissue lysate  
 Primary antibody: [TA349792] (CENPN Antibody)  
 at dilution 1/800  
 Secondary antibody: Goat anti rabbit IgG at  
 1/8000 dilution  
 Exposure time: 10 seconds



Immunohistochemistry of paraffin-embedded  
 Human brain tissue using [TA349792] (CENPN  
 Antibody) at dilution 1/70. (Original  
 magnification: ×200)



Immunohistochemistry of paraffin-embedded Human liver cancer tissue using [TA349792] (CENPN Antibody) at dilution 1/70. (Original magnification: ×200)