

Product datasheet for **TA349792**

CENPN Rabbit Polyclonal Antibody

Product data:

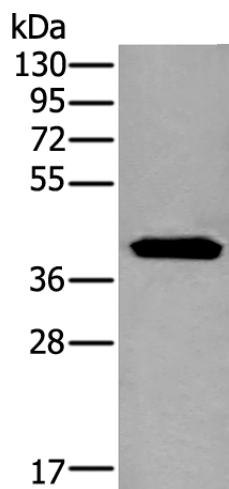
Product Type:	Primary Antibodies
Applications:	IHC, WB
Recommended Dilution:	WB: 1000-5000 WB positive control: Human left kidney tissue lysate IHC: 100-300 Positive control: Human brain Predicted cell location: Nucleus and Cytoplasm
Reactivity:	Human
Host:	Rabbit
Isotype:	IgG
Clonality:	Polyclonal
Immunogen:	Fusion protein of human CENPN
Formulation:	pH7.4 PBS, 0.05% NaN ₃ , 40% Glycerol
Concentration:	lot specific
Purification:	Antigen affinity purification
Conjugation:	Unconjugated
Storage:	Store at -20°C as received.
Stability:	Stable for 12 months from date of receipt.
Gene Name:	centromere protein N
Database Link:	NP_060925 Entrez Gene 55839 Human Q96H22
Background:	The protein encoded by this gene forms part of the nucleosome-associated complex and is important for kinetochore assembly. It is bound to kinetochores during S phase and G2 and recruits other proteins to the centromere. Pseudogenes of this gene are located on chromosome 2. Alternative splicing results in multiple transcript variants that encode different protein isoforms.
Synonyms:	BM039; C16orf60; CENP-N; ICEN32



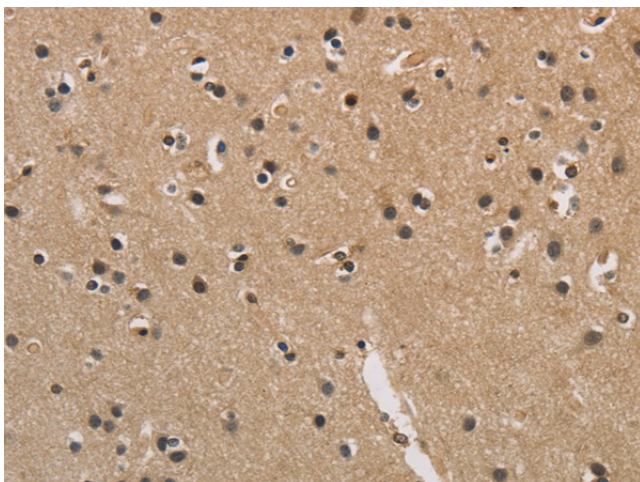
[View online »](#)

Protein Families: Druggable Genome

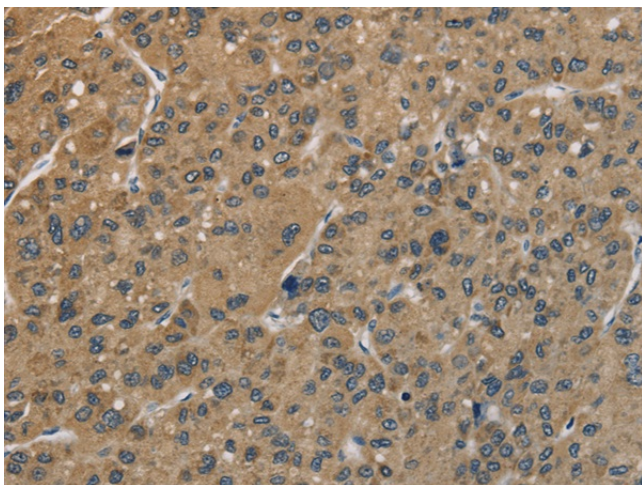
Product images:



Gel: 8%SDS-PAGE
Lysate: 40 μ g
Lane: Human left kidney tissue lysate
Primary antibody: TA349792 (CENPN Antibody) at dilution 1/800
Secondary antibody: Goat anti rabbit IgG at 1/8000 dilution
Exposure time: 10 seconds



Immunohistochemistry of paraffin-embedded Human brain tissue using TA349792 (CENPN Antibody) at dilution 1/70. (Original magnification: \times 200)



Immunohistochemistry of paraffin-embedded Human liver cancer tissue using TA349792 (CENPN Antibody) at dilution 1/70. (Original magnification: x200)