

Product datasheet for **TA349791S**

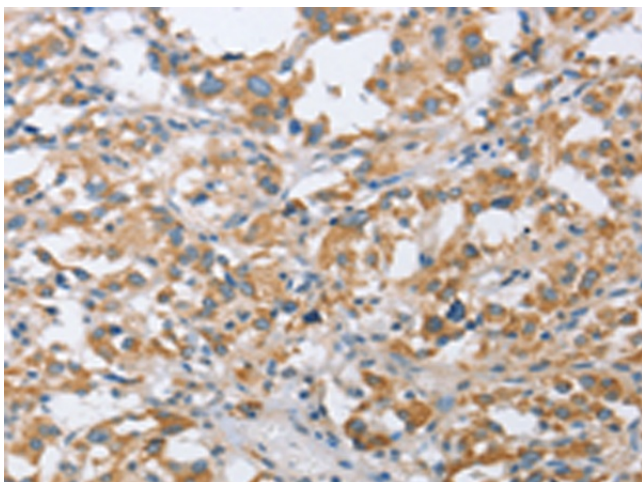
CENPO Rabbit Polyclonal Antibody

Product data:

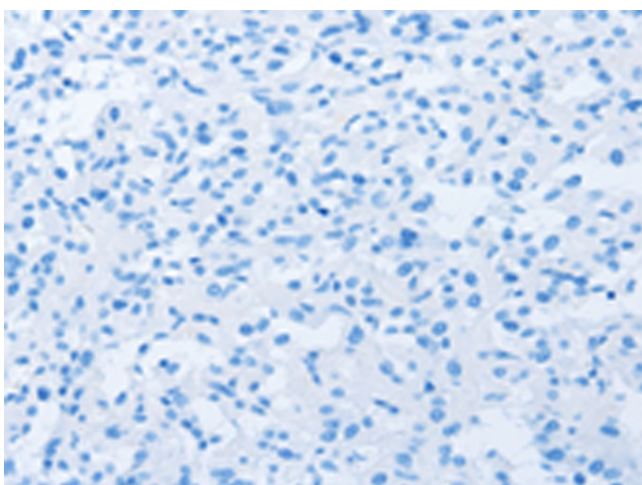
Product Type:	Primary Antibodies
Applications:	IHC
Recommended Dilution:	IHC: 25-100 Positive control: Human thyroid cancer Predicted cell location: Cytoplasm
Reactivity:	Human
Host:	Rabbit
Isotype:	IgG
Clonality:	Polyclonal
Immunogen:	Fusion protein of human CENPO
Formulation:	pH7.4 PBS, 0.05% NaN ₃ , 40% Glycerol
Purification:	Antigen affinity purification
Conjugation:	Unconjugated
Storage:	Store at -20°C as received.
Stability:	Stable for 12 months from date of receipt.
Gene Name:	centromere protein O
Database Link:	NP_077298 Entrez Gene 79172 Human Q9BU64
Background:	This gene encodes a component of the interphase centromere complex. The encoded protein is localized to the centromere throughout the cell cycle and is required for bipolar spindle assembly, chromosome segregation and checkpoint signaling during mitosis. Alternatively spliced transcript variants encoding multiple protein isoforms have been observed for this gene.
Synonyms:	CENP-O; ICEN-36; MCM21R



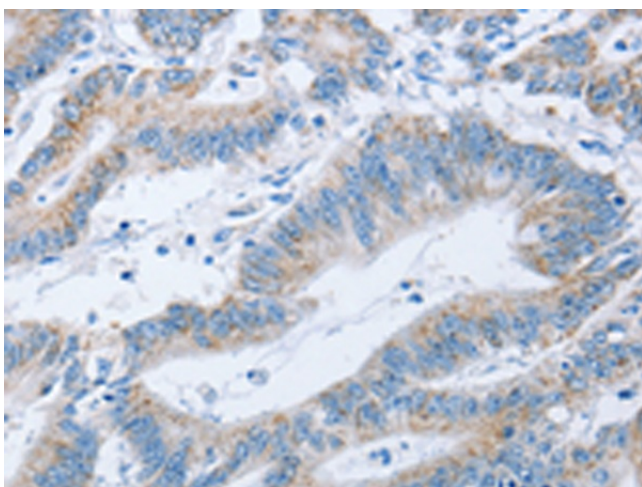
[View online »](#)

Product images:

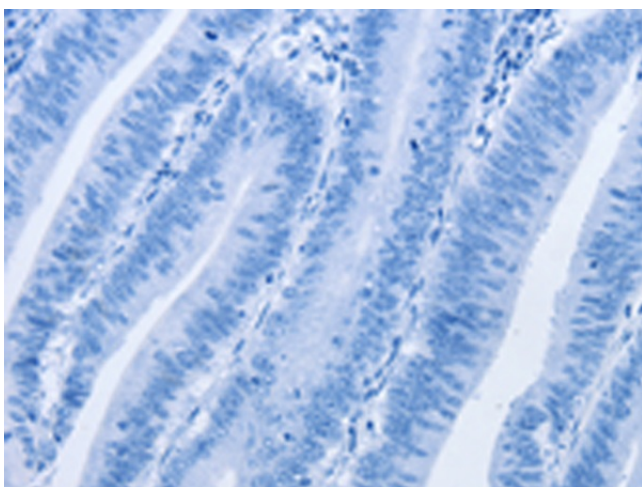
Immunohistochemistry of paraffin-embedded Human thyroid cancer tissue using [TA349791] (CENPO Antibody) at dilution 1/40 (Original magnification: ×200)



Immunohistochemistry of paraffin-embedded Human thyroid cancer tissue using [TA349791] (CENPO Antibody) at dilution 1/40, treated with fusion protein. (Original magnification: ×200)



Immunohistochemistry of paraffin-embedded Human colon cancer tissue using [TA349791] (CENPO Antibody) at dilution 1/40 (Original magnification: $\times 200$)



Immunohistochemistry of paraffin-embedded Human colon cancer tissue using [TA349791] (CENPO Antibody) at dilution 1/40, treated with fusion protein. (Original magnification: $\times 200$)