

## Product datasheet for **TA349790**

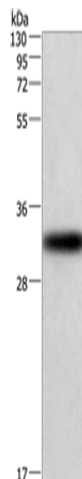
### CENPP Rabbit Polyclonal Antibody

#### Product data:

Product Type:	Primary Antibodies
Applications:	WB
Recommended Dilution:	WB: 200-1000 WB positive control: 293T cells
Reactivity:	Human
Host:	Rabbit
Isotype:	IgG
Clonality:	Polyclonal
Immunogen:	Fusion protein of human CENPP
Formulation:	pH7.4 PBS, 0.05% NaN <sub>3</sub> , 40% Glycerol
Concentration:	lot specific
Purification:	Antigen affinity purification
Conjugation:	Unconjugated
Storage:	Store at -20°C as received.
Stability:	Stable for 12 months from date of receipt.
Predicted Protein Size:	33 kDa
Gene Name:	centromere protein P
Database Link:	<a href="#">NP_001012267</a> <a href="#">Entrez Gene 401541 Human</a> <a href="#">Q6IPU0</a>
Background:	CENPP is a subunit of a CENPH (MIM 605607)-CENPI (MIM 300065)-associated centromeric complex that targets CENPA (MIM 117139) to centromeres and is required for proper kinetochore function and mitotic progression. Component of the CENPA-CAD (nucleosome distal) complex, a complex recruited to centromeres which is involved in assembly of kinetochore proteins, mitotic progression and chromosome segregation. May be involved in incorporation of newly synthesized CENPA into centromeres via its interaction with the CENPA-NAC complex.
Synonyms:	CENP-P



[View online »](#)

**Product images:**


Gel: 6%SDS-PAGE

Lysate: 40 µg

Lane: 293T cells

Primary antibody: TA349790 (CENPP Antibody) at dilution 1/449

Secondary antibody: Goat anti rabbit IgG at 1/8000 dilution

Exposure time: 2 minutes