

## Product datasheet for **TA349777S**

### CD33 Rabbit Polyclonal Antibody

#### Product data:

Product Type:	Primary Antibodies
Applications:	IHC, WB
Recommended Dilution:	WB: 500-2000 WB positive control: HepG2 cell, Mouse liver tissue, Jurkat cell lysates IHC: 50-100 Positive control: Human gastric cancer Predicted cell location: Cytoplasm and Cell membrane
Reactivity:	Human, Mouse
Host:	Rabbit
Isotype:	IgG
Clonality:	Polyclonal
Immunogen:	Fusion protein of human CD33
Formulation:	pH7.4 PBS, 0.05% NaN <sub>3</sub> , 40% Glycerol
Purification:	Antigen affinity purification
Conjugation:	Unconjugated
Storage:	Store at -20°C as received.
Stability:	Stable for 12 months from date of receipt.
Predicted Protein Size:	40 kDa
Gene Name:	CD33 molecule
Database Link:	<a href="#">NP_001763</a> <a href="#">Entrez Gene 12489 Mouse</a> <a href="#">Entrez Gene 945 Human</a> <a href="#">P20138</a>



[View online »](#)

**Background:**

CD33 or Siglec-3 is a transmembrane receptor expressed on cells of myeloid lineage. It is usually considered myeloid-specific, but it can also be found on some lymphoid cells. Putative adhesion molecule of myelomonocytic-derived cells that mediates sialic-acid dependent binding to cells. Preferentially binds to alpha-2,6-linked sialic acid. The sialic acid recognition site may be masked by cis interactions with sialic acids on the same cell surface. In the immune response, may act as an inhibitory receptor upon ligand induced tyrosine phosphorylation by recruiting cytoplasmic phosphatase(s) via their SH2 domain(s) that block signal transduction through dephosphorylation of signaling molecules.

**Synonyms:**

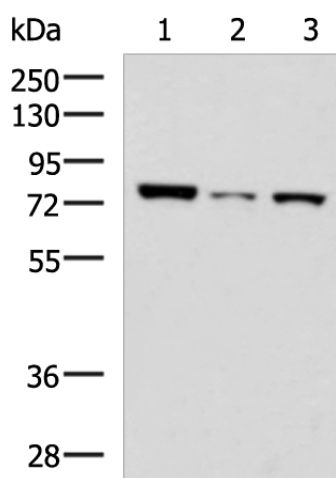
p67; SIGLEC-3; SIGLEC3

**Protein Families:**

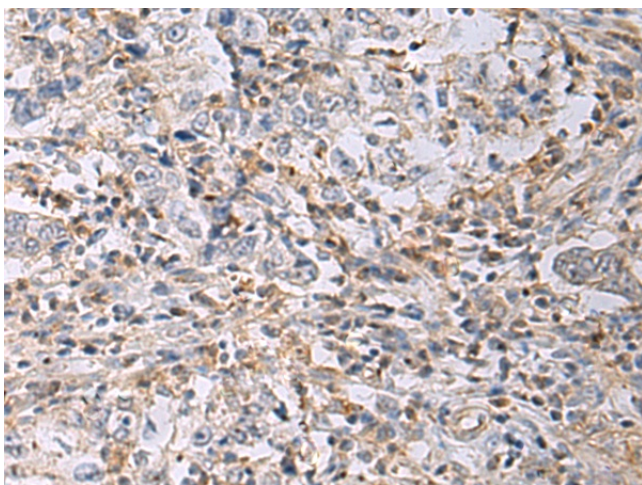
Druggable Genome, Transmembrane

**Protein Pathways:**

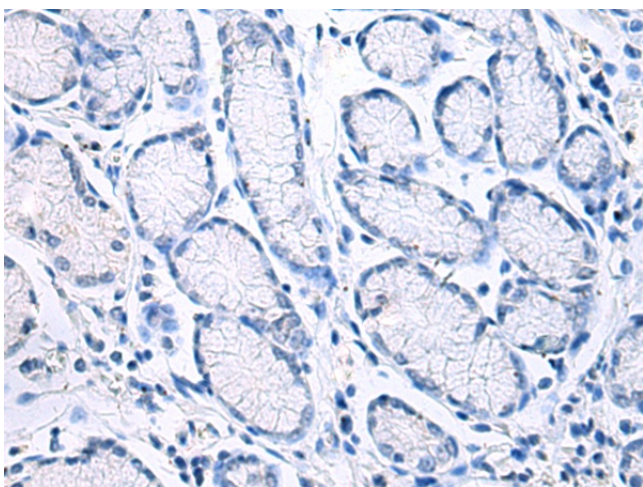
Hematopoietic cell lineage

**Product images:**


Gel: 8%SDS-PAGE  
 Lysate: 40 µg  
 Lane 1-3: HepG2 cell  
 Mouse liver tissue  
 Jurkat cell lysates  
 Primary antibody: [TA349777] (CD33 Antibody) at dilution 1/750  
 Secondary antibody: Goat anti rabbit IgG at 1/5000 dilution  
 Exposure time: 3 minutes



Immunohistochemistry of paraffin-embedded Human gastric cancer tissue using [TA349777] (CD33 Antibody) at dilution 1/30 (Original magnification: ×200)



Immunohistochemistry of paraffin-embedded Human gastric cancer tissue using [TA349777] (CD33 Antibody) at dilution 1/30, treated with fusion protein. (Original magnification: ×200)