

## Product datasheet for **TA349776**

### SIGLEC9 Rabbit Polyclonal Antibody

#### Product data:

Product Type:	Primary Antibodies
Applications:	IHC, WB
Recommended Dilution:	WB: 500-2000 WB positive control: Human plasma solution IHC: 50-100 Positive control: Human gastric cancer Predicted cell location: Cytoplasm
Reactivity:	Human
Host:	Rabbit
Isotype:	IgG
Clonality:	Polyclonal
Immunogen:	Fusion protein of human SIGLEC9
Formulation:	pH7.4 PBS, 0.05% NaN <sub>3</sub> , 40% Glycerol
Concentration:	lot specific
Purification:	Antigen affinity purification
Conjugation:	Unconjugated
Storage:	Store at -20°C as received.
Stability:	Stable for 12 months from date of receipt.
Predicted Protein Size:	50 kDa
Gene Name:	sialic acid binding Ig like lectin 9
Database Link:	<a href="#">NP_055256</a> <a href="#">Entrez Gene 27180 Human</a> <a href="#">Q9Y336</a>

**Background:** Sialic acid-binding Ig-like lectin 9 is a protein that in humans is encoded by the SIGLEC9 gene. Putative adhesion molecule that mediates sialic-acid dependent binding to cells. Preferentially binds to alpha-2,3- or alpha-2,6-linked sialic acid. The sialic acid recognition site may be masked by cis interactions with sialic acids on the same cell surface. Expressed by peripheral blood leukocytes (neutrophils and monocytes but not eosinophils).

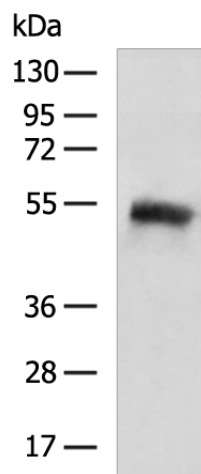


[View online »](#)

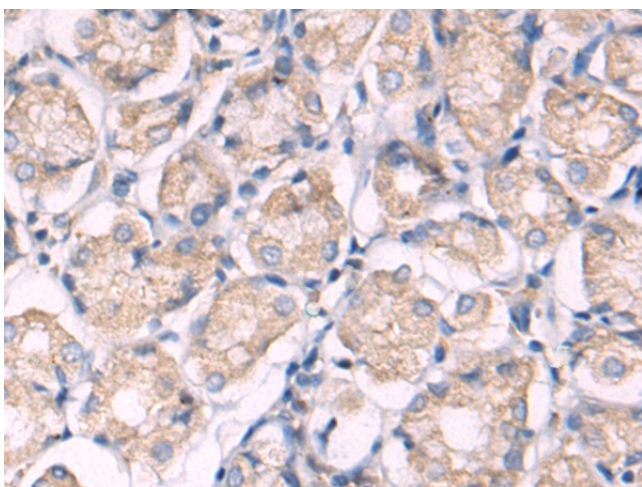
**Synonyms:** CD329; CDw329; FOAP-9; OBBP-LIKE; siglec-9

**Protein Families:** Druggable Genome, Transmembrane

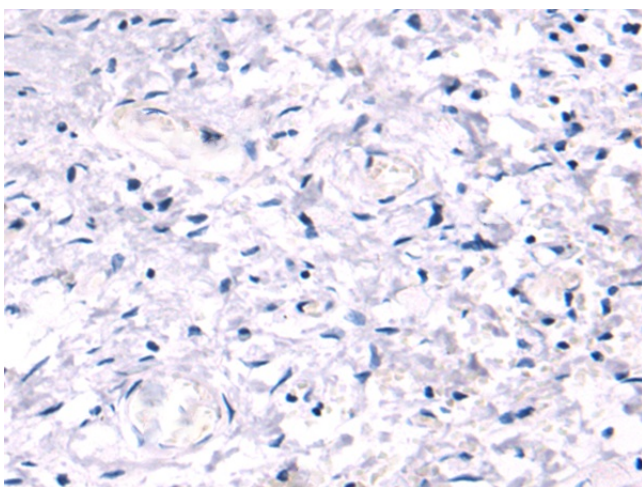
**Product images:**



Gel: 8%SDS-PAGE  
Lysate: 40 µg  
Lane: Human plasma solution  
Primary antibody: TA349776 (SIGLEC9 Antibody)  
at dilution 1/800  
Secondary antibody: Goat anti rabbit IgG at  
1/5000 dilution  
Exposure time: 1 minute



Immunohistochemistry of paraffin-embedded  
Human gastric cancer tissue using TA349776  
(SIGLEC9 Antibody) at dilution 1/60 (Original  
magnification: ×200)



Immunohistochemistry of paraffin-embedded Human gastric cancer tissue using TA349776 (SIGLEC9 Antibody) at dilution 1/60, treated with fusion protein. (Original magnification: ×200)