

## Product datasheet for **TA349772S**

### CD239 (BCAM) Rabbit Polyclonal Antibody

#### Product data:

Product Type:	Primary Antibodies
Applications:	IHC, WB
Recommended Dilution:	WB: 500-2000 WB positive control: NIH/3T3 cells IHC: 25-100 Positive control: Human prostate cancer Predicted cell location: Cytoplasm
Reactivity:	Human, Mouse
Host:	Rabbit
Isotype:	IgG
Clonality:	Polyclonal
Immunogen:	Fusion protein of human BCAM
Formulation:	pH7.4 PBS, 0.05% NaN <sub>3</sub> , 40% Glycerol
Purification:	Antigen affinity purification
Conjugation:	Unconjugated
Storage:	Store at -20°C as received.
Stability:	Stable for 12 months from date of receipt.
Predicted Protein Size:	67 kDa
Gene Name:	basal cell adhesion molecule (Lutheran blood group)
Database Link:	<a href="#">NP_005572</a> <a href="#">Entrez Gene 57278 Mouse</a> <a href="#">Entrez Gene 4059 Human</a> <a href="#">P50895</a>



[View online »](#)

**Background:**

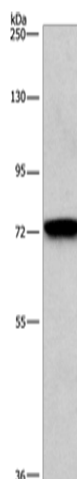
This gene encodes Lutheran blood group glycoprotein, a member of the immunoglobulin superfamily and a receptor for the extracellular matrix protein, laminin. The protein contains five extracellular immunoglobulin domains, a single transmembrane domain, and a short C-terminal cytoplasmic tail. This protein may play a role in epithelial cell cancer and in vaso-occlusion of red blood cells in sickle cell disease. Polymorphisms in this gene define some of the antigens in the Lutheran system and also the Auberger system. Inactivating variants of this gene result in the recessive Lutheran phenotype, Lu(a-b-), of the Lutheran blood group. Two transcript variants encoding different isoforms have been found for this gene.

**Synonyms:**

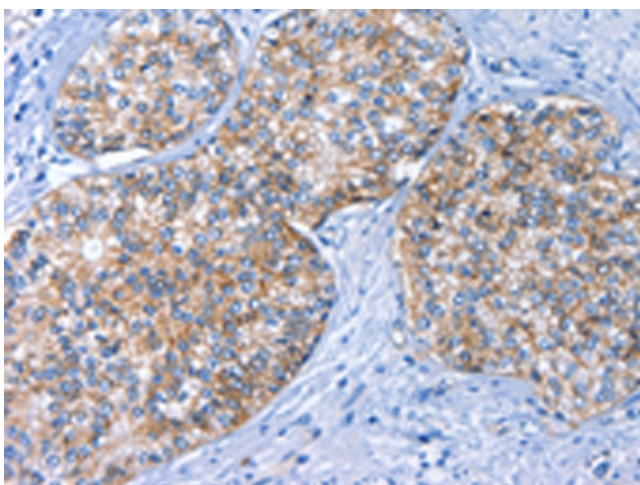
AU; CD239; LU; MSK19

**Protein Families:**

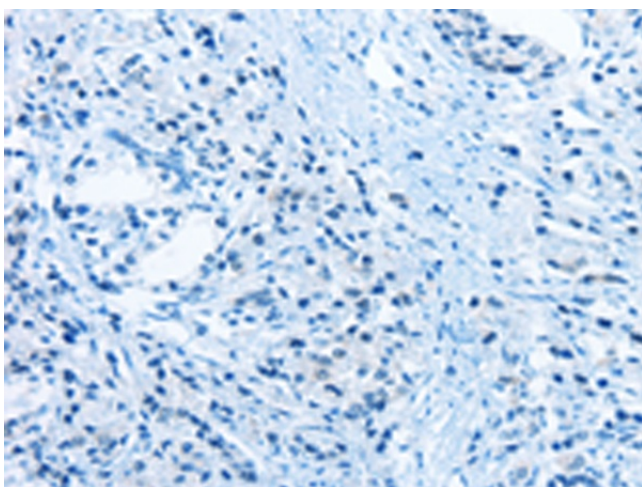
Druggable Genome, Transmembrane

**Product images:**

Gel: 6%SDS-PAGE  
Lysate: 40 µg  
Lane: NIH/3T3 cells  
Primary antibody: [TA349772] (BCAM Antibody) at dilution 1/476  
Secondary antibody: Goat anti rabbit IgG at 1/8000 dilution  
Exposure time: 1 minute



Immunohistochemistry of paraffin-embedded Human prostate cancer tissue using [TA349772] (BCAM Antibody) at dilution 1/40 (Original magnification: ×200)



Immunohistochemistry of paraffin-embedded Human prostate cancer tissue using [TA349772] (BCAM Antibody) at dilution 1/40, treated with fusion protein. (Original magnification: ×200)