

Product datasheet for **TA349772**

CD239 (BCAM) Rabbit Polyclonal Antibody

Product data:

Product Type:	Primary Antibodies
Applications:	IHC, WB
Recommended Dilution:	WB: 500-2000 WB positive control: NIH/3T3 cells IHC: 25-100 Positive control: Human prostate cancer Predicted cell location: Cytoplasm
Reactivity:	Human, Mouse
Host:	Rabbit
Isotype:	IgG
Clonality:	Polyclonal
Immunogen:	Fusion protein of human BCAM
Formulation:	pH7.4 PBS, 0.05% NaN ₃ , 40% Glycerol
Concentration:	lot specific
Purification:	Antigen affinity purification
Conjugation:	Unconjugated
Storage:	Store at -20°C as received.
Stability:	Stable for 12 months from date of receipt.
Predicted Protein Size:	67 kDa
Gene Name:	basal cell adhesion molecule (Lutheran blood group)
Database Link:	NP_005572 Entrez Gene 57278 Mouse Entrez Gene 4059 Human P50895



[View online »](#)

Background:

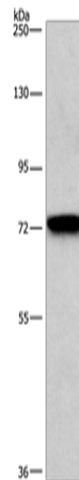
This gene encodes Lutheran blood group glycoprotein, a member of the immunoglobulin superfamily and a receptor for the extracellular matrix protein, laminin. The protein contains five extracellular immunoglobulin domains, a single transmembrane domain, and a short C-terminal cytoplasmic tail. This protein may play a role in epithelial cell cancer and in vaso-occlusion of red blood cells in sickle cell disease. Polymorphisms in this gene define some of the antigens in the Lutheran system and also the Auberger system. Inactivating variants of this gene result in the recessive Lutheran phenotype, Lu(a-b-), of the Lutheran blood group. Two transcript variants encoding different isoforms have been found for this gene.

Synonyms:

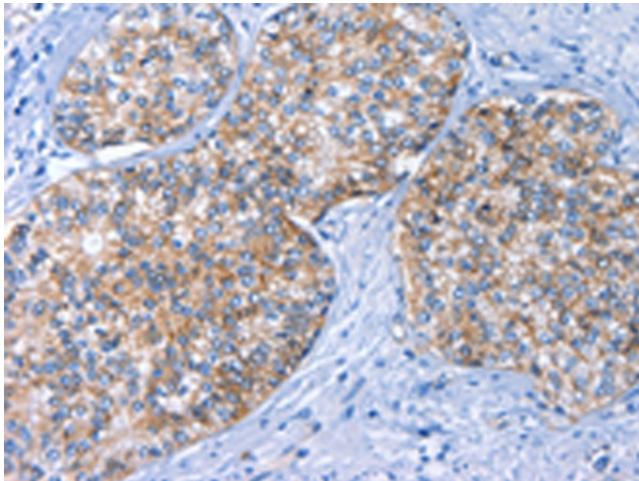
AU; CD239; LU; MSK19

Protein Families:

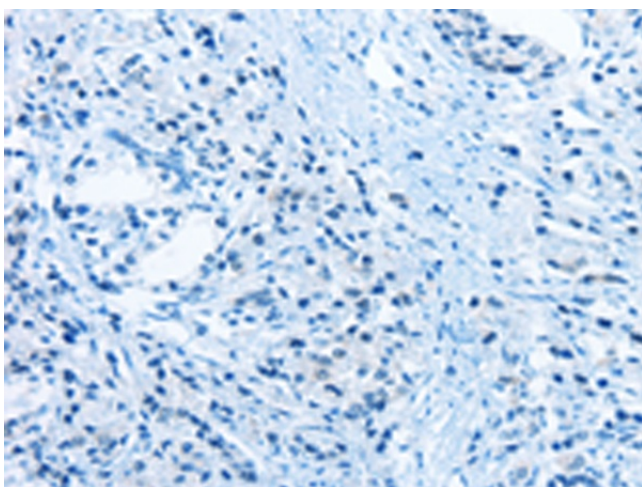
Druggable Genome, Transmembrane

Product images:

Gel: 6%SDS-PAGE
Lysate: 40 µg
Lane: NIH/3T3 cells
Primary antibody: TA349772 (BCAM Antibody) at dilution 1/476
Secondary antibody: Goat anti rabbit IgG at 1/8000 dilution
Exposure time: 1 minute



Immunohistochemistry of paraffin-embedded Human prostate cancer tissue using TA349772 (BCAM Antibody) at dilution 1/40 (Original magnification: ×200)



Immunohistochemistry of paraffin-embedded Human prostate cancer tissue using TA349772 (BCAM Antibody) at dilution 1/40, treated with fusion protein. (Original magnification: ×200)