

Product datasheet for **TA349771S**

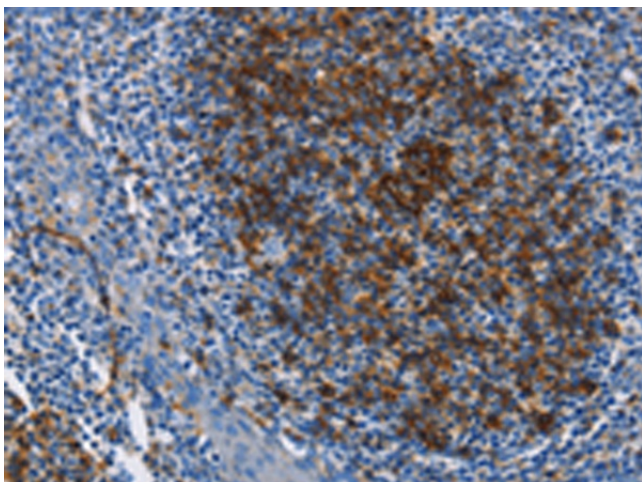
CD23 (FCER2) Rabbit Polyclonal Antibody

Product data:

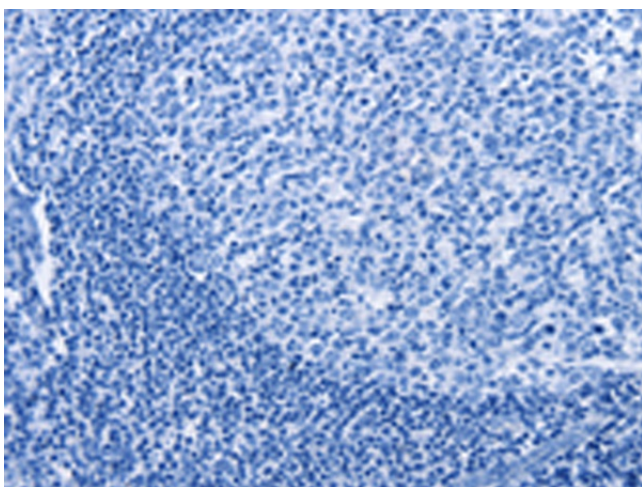
Product Type:	Primary Antibodies
Applications:	IHC
Recommended Dilution:	IHC: 25-100 Positive control: Human tonsil Predicted cell location: Cytoplasm
Reactivity:	Human
Host:	Rabbit
Isotype:	IgG
Clonality:	Polyclonal
Immunogen:	Fusion protein of human FCER2
Formulation:	pH7.4 PBS, 0.05% NaN ₃ , 40% GlycerolIn
Purification:	Antigen affinity purification
Conjugation:	Unconjugated
Storage:	Store at -20°C as received.
Stability:	Stable for 12 months from date of receipt.
Gene Name:	Fc fragment of IgE receptor II
Database Link:	NP_001993 Entrez Gene 2208 Human P06734
Background:	The protein encoded by this gene is a B-cell specific antigen, and a low-affinity receptor for IgE. It has essential roles in B cell growth and differentiation, and the regulation of IgE production. This protein also exists as a soluble secreted form, then functioning as a potent mitogenic growth factor. Alternatively spliced transcript variants encoding different isoforms have been described for this gene.
Synonyms:	BLAST-2; CD23; CD23A; CLEC4J; FCE2; IGEBF
Protein Families:	Secreted Protein, Transmembrane
Protein Pathways:	Hematopoietic cell lineage



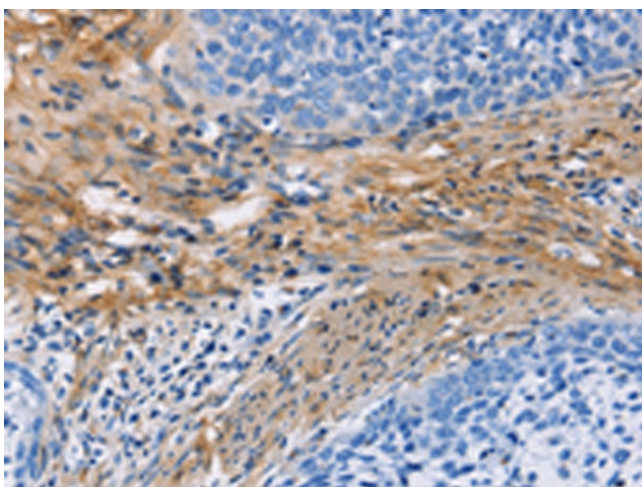
[View online »](#)

Product images:

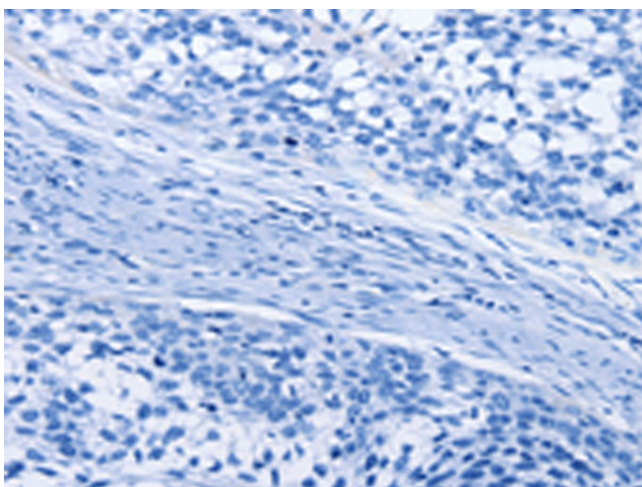
Immunohistochemistry of paraffin-embedded Human tonsil tissue using [TA349771] (FCER2 Antibody) at dilution 1/40 (Original magnification: ×200)



Immunohistochemistry of paraffin-embedded Human tonsil tissue using [TA349771] (FCER2 Antibody) at dilution 1/40, treated with fusion protein. (Original magnification: ×200)



Immunohistochemistry of paraffin-embedded Human cervical cancer tissue using [TA349771] (FCER2 Antibody) at dilution 1/40 (Original magnification: $\times 200$)



Immunohistochemistry of paraffin-embedded Human cervical cancer tissue using [TA349771] (FCER2 Antibody) at dilution 1/40, treated with fusion protein. (Original magnification: $\times 200$)