

Product datasheet for **TA349764**

SIGLEC5 Rabbit Polyclonal Antibody

Product data:

Product Type:	Primary Antibodies
Applications:	IHC, WB
Recommended Dilution:	WB: 200-1000 WB positive control: Mouse liver tissue IHC: 50-200 Positive control: Human gastric cancer Predicted cell location: Cytoplasm
Reactivity:	Human, Mouse
Host:	Rabbit
Isotype:	IgG
Clonality:	Polyclonal
Immunogen:	Fusion protein of human SIGLEC5
Formulation:	pH7.4 PBS, 0.05% NaN ₃ , 40% Glycerol
Concentration:	lot specific
Purification:	Antigen affinity purification
Conjugation:	Unconjugated
Storage:	Store at -20°C as received.
Stability:	Stable for 12 months from date of receipt.
Predicted Protein Size:	61 kDa
Gene Name:	sialic acid binding Ig like lectin 5
Database Link:	NP_003821 Entrez Gene 8778 Human O15389



[View online »](#)

Background:

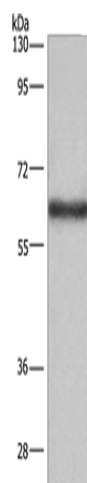
This gene encodes a member of the sialic acid-binding immunoglobulin-like lectin (Siglec) family. These cell surface lectins are characterized by structural motifs in the immunoglobulin (Ig)-like domains and sialic acid recognition sites in the first Ig V set domain. The encoded protein is a member of the CD33-related subset of Siglecs and inhibits the activation of several cell types including monocytes, macrophages and neutrophils. Binding of group B Streptococcus (GBS) to the encoded protein plays a role in GBS immune evasion

Synonyms:

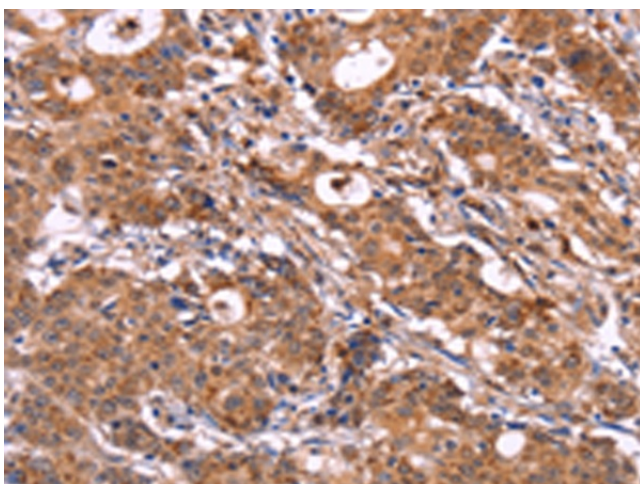
CD33L2; CD170; OB-BP2; OBBP2; SIGLEC-5

Protein Families:

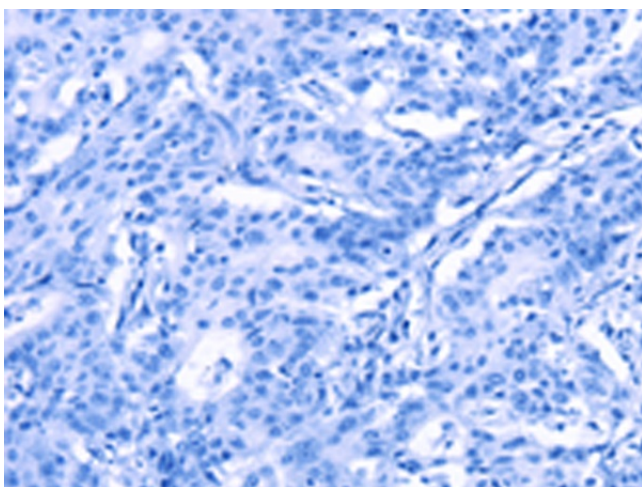
Druggable Genome, Transmembrane

Product images:

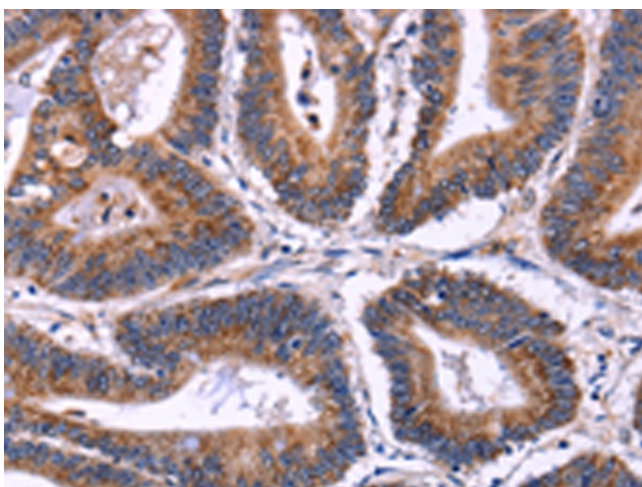
Gel: 6%SDS-PAGE
Lysate: 40 µg
Lane: Mouse liver tissue
Primary antibody: TA349764 (SIGLEC5 Antibody) at dilution 1/350
Secondary antibody: Goat anti rabbit IgG at 1/8000 dilution
Exposure time: 2minutes



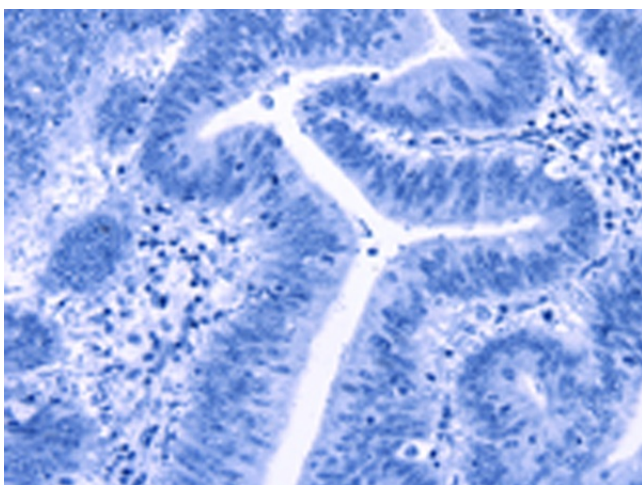
Immunohistochemistry of paraffin-embedded Human gastric cancer tissue using TA349764 (SIGLEC5 Antibody) at dilution 1/30 (Original magnification: x200)



Immunohistochemistry of paraffin-embedded Human gastric cancer tissue using TA349764 (SIGLEC5 Antibody) at dilution 1/30, treated with fusion protein. (Original magnification: $\times 200$)



Immunohistochemistry of paraffin-embedded Human colon cancer tissue using TA349764 (SIGLEC5 Antibody) at dilution 1/30 (Original magnification: $\times 200$)



Immunohistochemistry of paraffin-embedded Human colon cancer tissue using TA349764 (SIGLEC5 Antibody) at dilution 1/30, treated with fusion protein. (Original magnification: $\times 200$)