

## Product datasheet for **TA349758**

### CD147 (BSG) Rabbit Polyclonal Antibody

#### Product data:

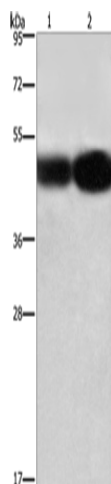
|                         |   |
|-------------------------|---|
| Product Type:           | Primary Antibodies  |
| Applications:           | IHC, WB   |
| Recommended Dilution:   | WB: 500-2000<br>WB positive control: A549 and 231 cells<br>IHC: 50-200<br>Positive control: Human esophagus cancer<br>Predicted cell location: Cell membrane and Cytoplasm  |
| Reactivity:             | Human   |
| Host:                   | Rabbit  |
| Isotype:                | IgG   |
| Clonality:              | Polyclonal  |
| Immunogen:              | Fusion protein of human BSG   |
| Formulation:            | pH7.4 PBS, 0.05% NaN <sub>3</sub> , 40% Glycerol  |
| Concentration:          | lot specific  |
| Purification:           | Antigen affinity purification   |
| Conjugation:            | Unconjugated  |
| Storage:                | Store at -20°C as received.   |
| Stability:              | Stable for 12 months from date of receipt.  |
| Predicted Protein Size: | 42 kDa  |
| Gene Name:              | basigin (Ok blood group)  |
| Database Link:          | <a href="#">NP_940993</a><br><a href="#">Entrez Gene 682 Human</a><br><a href="#">P35613</a>  |
| Background:             | The protein encoded by this gene is a plasma membrane protein that is important in spermatogenesis, embryo implantation, neural network formation, and tumor progression. The encoded protein is also a member of the immunoglobulin superfamily. Multiple transcript variants encoding different isoforms have been found for this gene. |
| Synonyms:               | 5F7; CD147; EMMPRIN; OK; TCSF   |



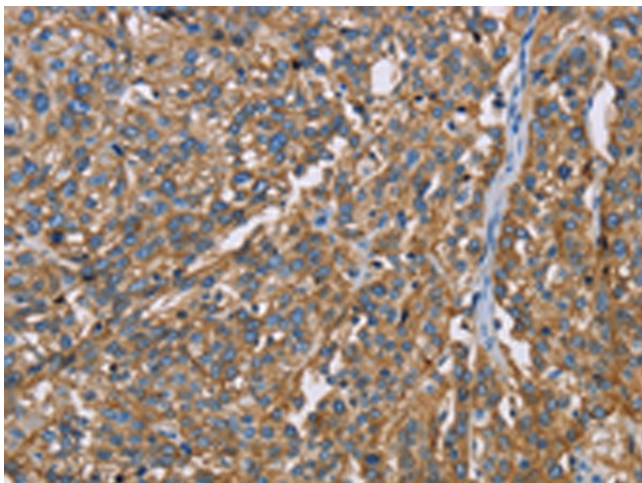
[View online »](#)

**Protein Families:** Druggable Genome, ES Cell Differentiation/IPS, Transmembrane

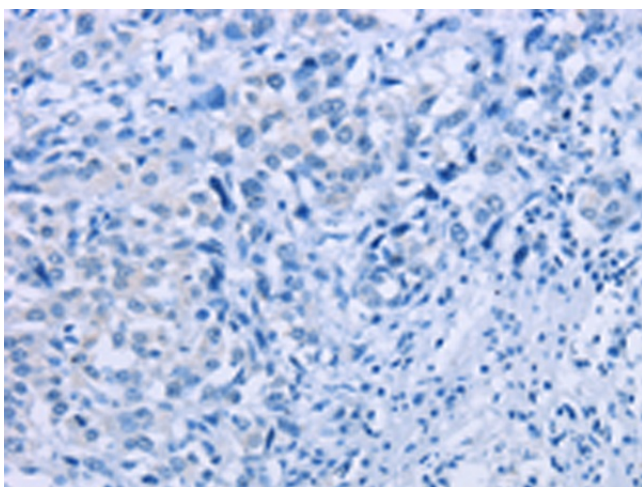
**Product images:**



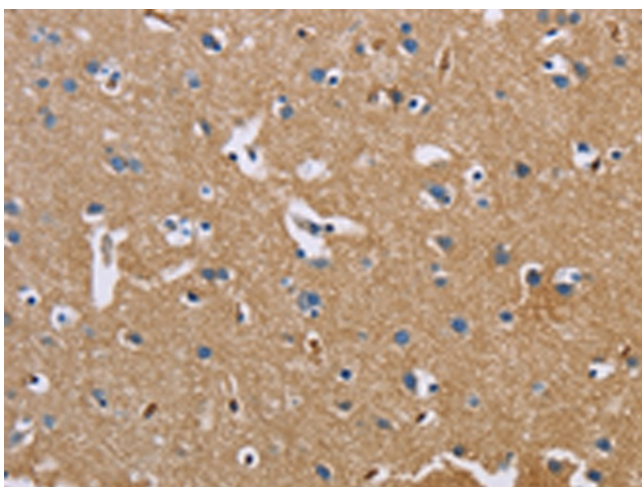
Gel: 8%SDS-PAGE  
Lysate: 40 µg  
Lane 1-2: A549 cells  
231 cells  
Primary antibody: TA349758 (BSG Antibody) at dilution 1/430  
Secondary antibody: Goat anti rabbit IgG at 1/8000 dilution  
Exposure time: 12 seconds



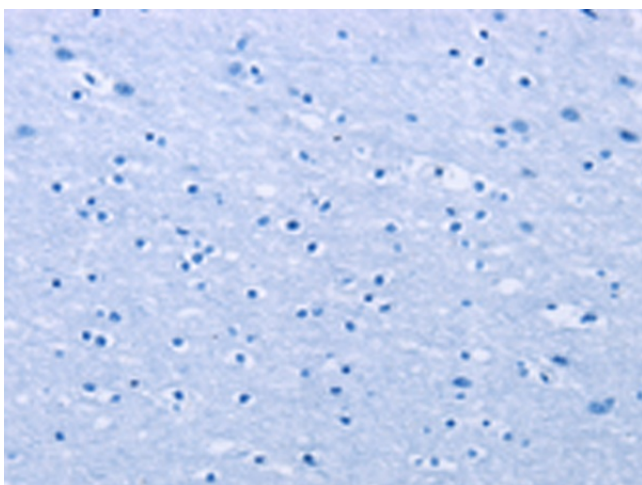
Immunohistochemistry of paraffin-embedded Human esophagus cancer tissue using TA349758 (BSG Antibody) at dilution 1/60 (Original magnification: ×200)



Immunohistochemistry of paraffin-embedded Human esophagus cancer tissue using TA349758 (BSG Antibody) at dilution 1/60, treated with fusion protein. (Original magnification: ×200)



Immunohistochemistry of paraffin-embedded Human brain tissue using TA349758 (BSG Antibody) at dilution 1/60 (Original magnification: ×200)



Immunohistochemistry of paraffin-embedded Human brain tissue using TA349758 (BSG Antibody) at dilution 1/60, treated with fusion protein. (Original magnification: ×200)