

Product datasheet for **TA349756**

IL2 Receptor beta (IL2RB) Rabbit Polyclonal Antibody

Product data:

Product Type:	Primary Antibodies
Applications:	IHC, WB
Recommended Dilution:	WB: 500-2000 WB positive control: HepG2, 231, Raji, 293T cell lysates IHC: 50-200 Positive control: Human liver cancer Predicted cell location: Cytoplasm
Reactivity:	Human
Host:	Rabbit
Isotype:	IgG
Clonality:	Polyclonal
Immunogen:	Fusion protein of human IL2RB
Formulation:	pH7.4 PBS, 0.05% NaN ₃ , 40% Glycerol
Concentration:	lot specific
Purification:	Antigen affinity purification
Conjugation:	Unconjugated
Storage:	Store at -20°C as received.
Stability:	Stable for 12 months from date of receipt.
Predicted Protein Size:	61 kDa
Gene Name:	interleukin 2 receptor subunit beta
Database Link:	NP_000869 Entrez Gene 3560 Human P14784



[View online »](#)

Background:

The interleukin 2 receptor, which is involved in T cell-mediated immune responses, is present in 3 forms with respect to ability to bind interleukin 2. The low affinity form is a monomer of the alpha subunit and is not involved in signal transduction. The intermediate affinity form consists of an alpha/beta subunit heterodimer, while the high affinity form consists of an alpha/beta/gamma subunit heterotrimer. Both the intermediate and high affinity forms of the receptor are involved in receptor-mediated endocytosis and transduction of mitogenic signals from interleukin 2. The protein encoded by this gene represents the beta subunit and is a type I membrane protein.

Synonyms:

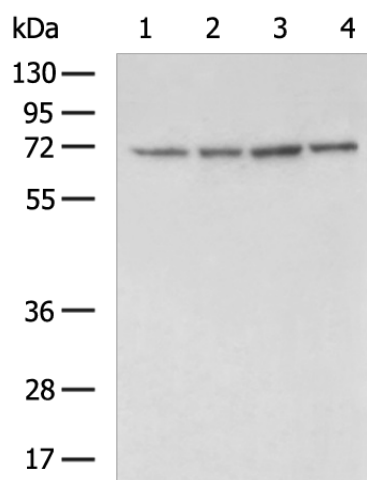
CD122; IL15RB; P70-75

Protein Families:

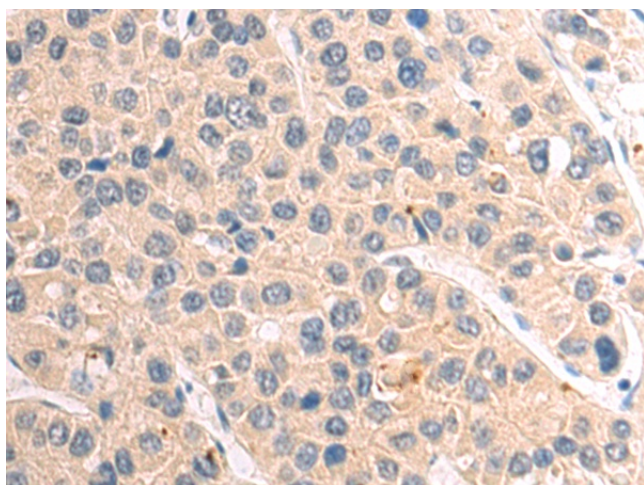
Druggable Genome, Transmembrane

Protein Pathways:

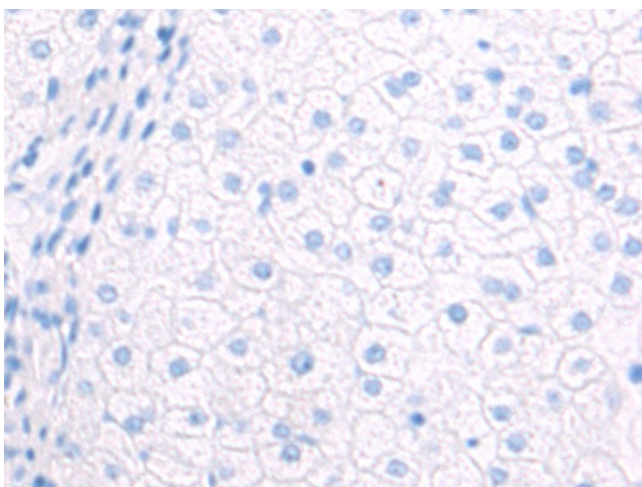
Cytokine-cytokine receptor interaction, Endocytosis, Jak-STAT signaling pathway

Product images:


Gel: 8%SDS-PAGE
 Lysate: 40 µg
 Lane 1-4: HepG2
 231
 Raji
 293T cell lysates
 Primary antibody: TA349756 (IL2RB Antibody) at dilution 1/700
 Secondary antibody: Goat anti rabbit IgG at 1/5000 dilution
 Exposure time: 90 seconds



Immunohistochemistry of paraffin-embedded Human liver cancer tissue using TA349756 (IL2RB Antibody) at dilution 1/95 (Original magnification: ×200)



Immunohistochemistry of paraffin-embedded Human liver cancer tissue using TA349756 (IL2RB Antibody) at dilution 1/95, treated with fusion protein. (Original magnification: ×200)