

## Product datasheet for **TA349755S**

### CCR9 Rabbit Polyclonal Antibody

#### Product data:

Product Type:	Primary Antibodies
Applications:	IHC
Recommended Dilution:	IHC: 50-200 Positive control: Human esophagus cancer Predicted cell location: Cytoplasm
Reactivity:	Human, Mouse
Host:	Rabbit
Isotype:	IgG
Clonality:	Polyclonal
Immunogen:	Fusion protein of human CCR9
Formulation:	pH7.4 PBS, 0.05% NaN <sub>3</sub> , 40% Glycerol
Purification:	Antigen affinity purification
Conjugation:	Unconjugated
Storage:	Store at -20°C as received.
Stability:	Stable for 12 months from date of receipt.
Gene Name:	C-C motif chemokine receptor 9
Database Link:	<a href="#">NP_006632</a> <a href="#">Entrez Gene 12769 Mouse</a> <a href="#">Entrez Gene 10803 Human</a> <a href="#">P51686</a>

**Background:** The protein encoded by this gene is a member of the beta chemokine receptor family. It is predicted to be a seven transmembrane protein similar to G protein-coupled receptors. Chemokines and their receptors are key regulators of the thymocytes migration and maturation in normal and inflammation conditions. The specific ligand of this receptor is CCL25. It has been found that this gene is differentially expressed by T lymphocytes of small intestine and colon, suggested a role in the thymocytes recruitment and development that may permit functional specialization of immune responses in different segment of the gastrointestinal tract. This gene is mapped to the chemokine receptor gene cluster region.

**Synonyms:** CC-CKR-9; CDw199; GPR-9-6; GPR28

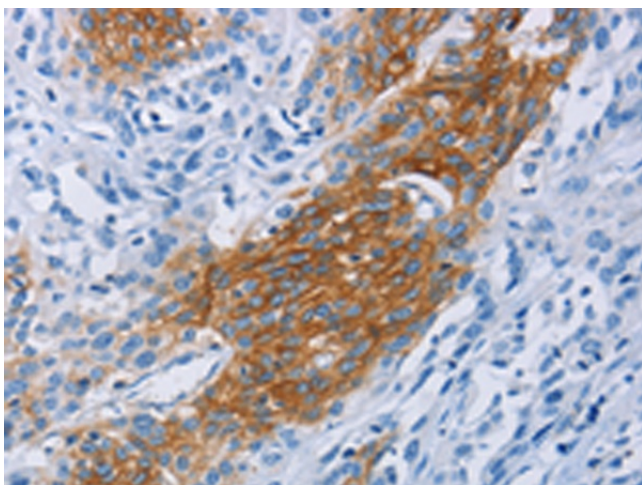


[View online »](#)

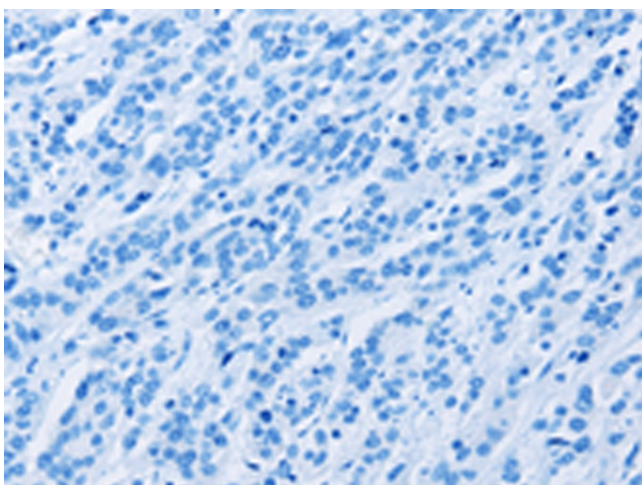
**Protein Families:** Druggable Genome, GPCR, Transmembrane

**Protein Pathways:** Chemokine signaling pathway, Cytokine-cytokine receptor interaction

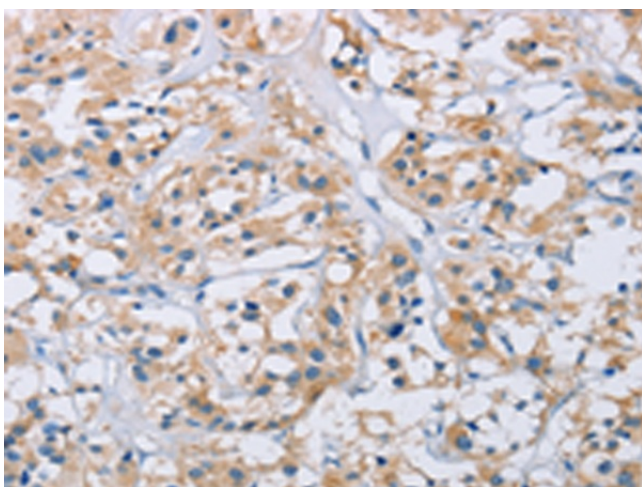
**Product images:**



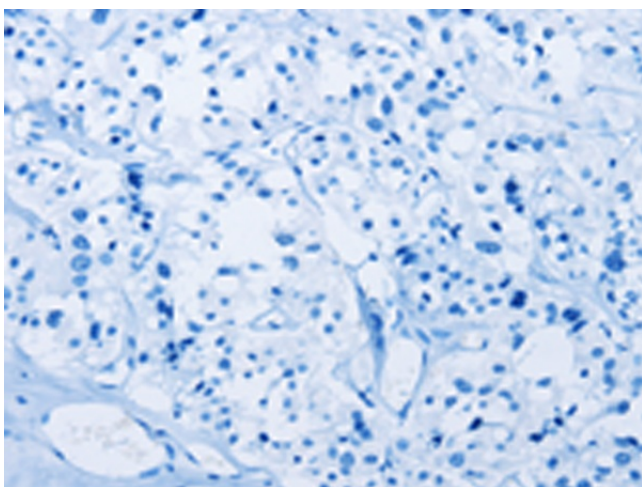
Immunohistochemistry of paraffin-embedded Human esophagus cancer tissue using [TA349755] (CCR9 Antibody) at dilution 1/60 (Original magnification:  $\times 200$ )



Immunohistochemistry of paraffin-embedded Human esophagus cancer tissue using [TA349755] (CCR9 Antibody) at dilution 1/60, treated with fusion protein. (Original magnification:  $\times 200$ )



Immunohistochemistry of paraffin-embedded Human thyroid cancer tissue using [TA349755] (CCR9 Antibody) at dilution 1/60 (Original magnification: ×200)



Immunohistochemistry of paraffin-embedded Human thyroid cancer tissue using [TA349755] (CCR9 Antibody) at dilution 1/60, treated with fusion protein. (Original magnification: ×200)