

Product datasheet for **TA349752**

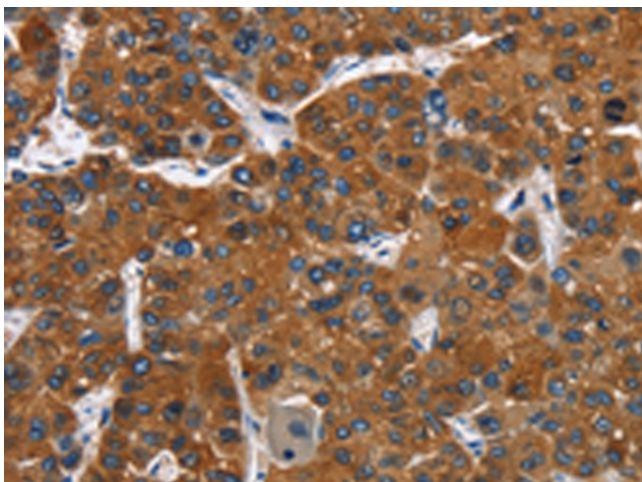
CATSPER3 Rabbit Polyclonal Antibody

Product data:

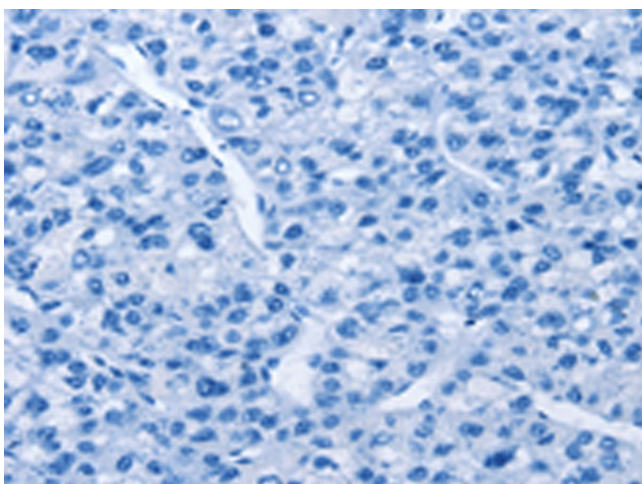
Product Type:	Primary Antibodies
Applications:	IHC
Recommended Dilution:	IHC: 100-300 Positive control: Human liver cancer Predicted cell location: Cytoplasm
Reactivity:	Human
Host:	Rabbit
Isotype:	IgG
Clonality:	Polyclonal
Immunogen:	Fusion protein of human CATSPER3
Formulation:	pH7.4 PBS, 0.05% NaN ₃ , 40% Glycerol
Concentration:	lot specific
Purification:	Antigen affinity purification
Conjugation:	Unconjugated
Storage:	Store at -20°C as received.
Stability:	Stable for 12 months from date of receipt.
Gene Name:	cation channel sperm associated 3
Database Link:	NP_821138 Entrez Gene 347732 Human Q86XQ3
Background:	CatSper3, is a protein which in humans is encoded by the CATSPER3 gene. CatSper3 is a member of the cation channels of sperm family of proteins. The four proteins in this family together form a Ca ²⁺ -permeant ion channel specific essential for the correct function of sperm cells. Voltage-gated calcium channel that plays a central role in calcium-dependent physiological responses essential for successful fertilization, such as sperm hyperactivation, acrosome reaction and chemotaxis towards the oocyte.
Synonyms:	CACRC
Protein Families:	Druggable Genome, Ion Channels: Other, Transmembrane



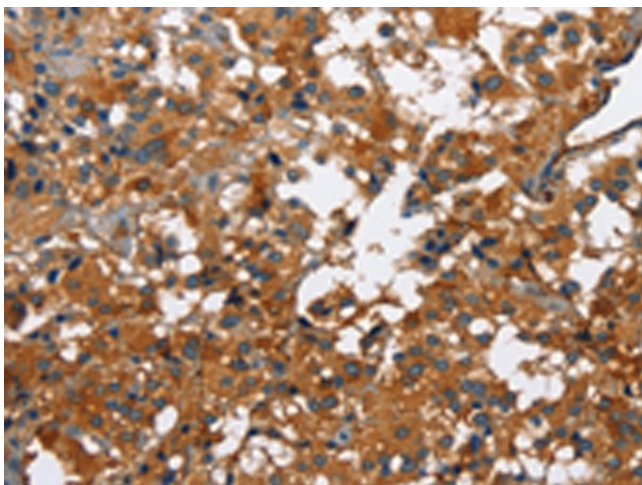
[View online »](#)

Product images:

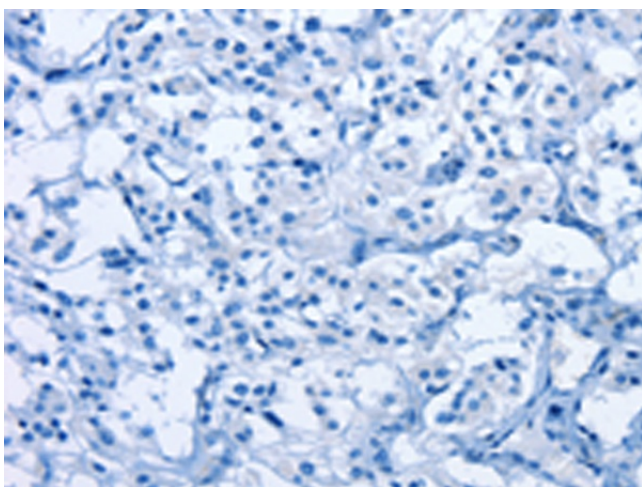
Immunohistochemistry of paraffin-embedded Human liver cancer tissue using TA349752 (CATSPER3 Antibody) at dilution 1/60 (Original magnification: $\times 200$)



Immunohistochemistry of paraffin-embedded Human liver cancer tissue using TA349752 (CATSPER3 Antibody) at dilution 1/60, treated with fusion protein. (Original magnification: $\times 200$)



Immunohistochemistry of paraffin-embedded Human thyroid cancer tissue using TA349752 (CATSPER3 Antibody) at dilution 1/60 (Original magnification: $\times 200$)



Immunohistochemistry of paraffin-embedded Human thyroid cancer tissue using TA349752 (CATSPER3 Antibody) at dilution 1/60, treated with fusion protein. (Original magnification: $\times 200$)