

## Product datasheet for **TA349747**

### CARD8 Rabbit Polyclonal Antibody

#### Product data:

Product Type:	Primary Antibodies
Applications:	IHC
Recommended Dilution:	IHC: 25-100 Positive control: Human thyroid cancer Predicted cell location: Nucleus and Cytoplasm
Reactivity:	Human
Host:	Rabbit
Isotype:	IgG
Clonality:	Polyclonal
Immunogen:	Fusion protein of human CARD8
Formulation:	pH7.4 PBS, 0.05% NaN <sub>3</sub> , 40% Glycerol
Concentration:	lot specific
Purification:	Antigen affinity purification
Conjugation:	Unconjugated
Storage:	Store at -20°C as received.
Stability:	Stable for 12 months from date of receipt.
Gene Name:	caspase recruitment domain family member 8
Database Link:	<a href="#">NP_055774</a> <a href="#">Entrez Gene 22900 Human</a> <a href="#">Q9Y2G2</a>

**Background:** The protein encoded by this gene belongs to the caspase recruitment domain (CARD)-containing family of proteins, which are involved in pathways leading to activation of caspases or nuclear factor kappa-B (NFkB). This protein may be a component of the inflammasome, a protein complex that plays a role in the activation of proinflammatory caspases. It is thought that this protein acts as an adaptor molecule that negatively regulates NFkB activation, CASP1-dependent IL1B secretion, and apoptosis. Polymorphisms in this gene may be associated with a susceptibility to rheumatoid arthritis.

**Synonyms:** CARDINAL; DACAR; DAKAR; NDPP; NDPP1; TUCAN

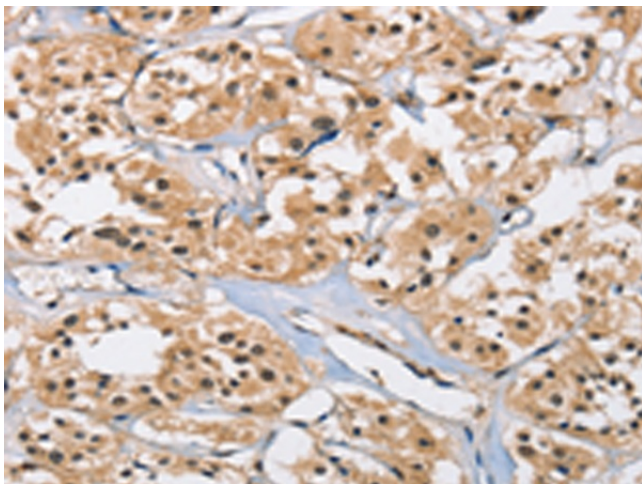


[View online »](#)

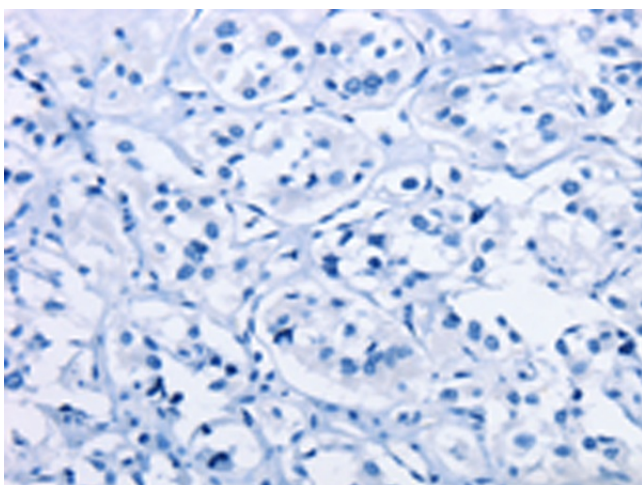
Protein Families: Druggable Genome

Protein Pathways: NOD-like receptor signaling pathway

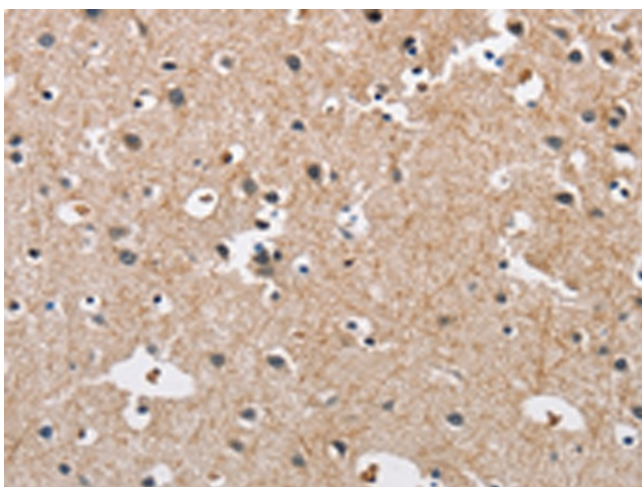
### Product images:



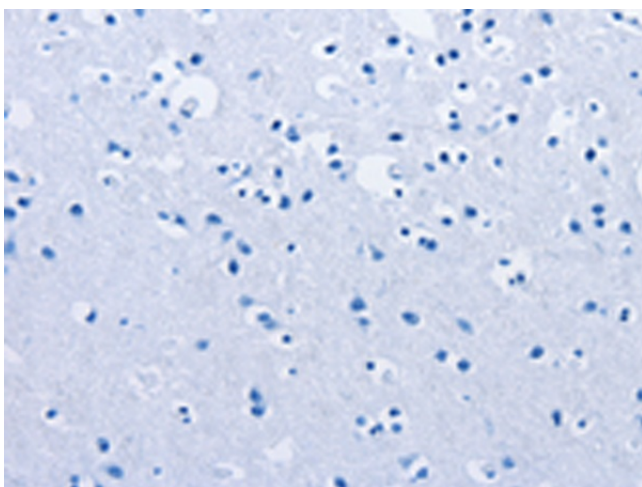
Immunohistochemistry of paraffin-embedded Human thyroid cancer tissue using TA349747 (CARD8 Antibody) at dilution 1/40 (Original magnification:  $\times 200$ )



Immunohistochemistry of paraffin-embedded Human thyroid cancer tissue using TA349747 (CARD8 Antibody) at dilution 1/40, treated with fusion protein. (Original magnification:  $\times 200$ )



Immunohistochemistry of paraffin-embedded Human brain tissue using TA349747 (CARD8 Antibody) at dilution 1/40 (Original magnification: ×200)



Immunohistochemistry of paraffin-embedded Human brain tissue using TA349747 (CARD8 Antibody) at dilution 1/40, treated with fusion protein. (Original magnification: ×200)