

## Product datasheet for **TA349746S**

### CARD14 Rabbit Polyclonal Antibody

#### Product data:

Product Type:	Primary Antibodies
Applications:	IHC, WB
Recommended Dilution:	WB: 200-1000 WB positive control: NIH/3T3 and A172 cells IHC: 25-100 Positive control: Human thyroid cancer Predicted cell location: Cytoplasm
Reactivity:	Human, Mouse
Host:	Rabbit
Isotype:	IgG
Clonality:	Polyclonal
Immunogen:	Fusion protein of human CARD14
Formulation:	pH7.4 PBS, 0.05% NaN <sub>3</sub> , 40% Glycerol
Purification:	Antigen affinity purification
Conjugation:	Unconjugated
Storage:	Store at -20°C as received.
Stability:	Stable for 12 months from date of receipt.
Predicted Protein Size:	113 kDa
Gene Name:	caspase recruitment domain family member 14
Database Link:	<a href="#">NP_438170</a> <a href="#">Entrez Gene 170720 Mouse</a> <a href="#">Entrez Gene 79092 Human</a> <a href="#">Q9BXL6</a>

**Background:** This gene encodes a caspase recruitment domain-containing protein that is a member of the membrane-associated guanylate kinase (MAGUK) family of proteins. Members of this protein family are scaffold proteins that are involved in a diverse array of cellular processes including cellular adhesion, signal transduction and cell polarity control. This protein has been shown to specifically interact with BCL10, a protein known to function as a positive regulator of cell apoptosis and NF-kappaB activation. Alternate splicing results in multiple transcript variants.

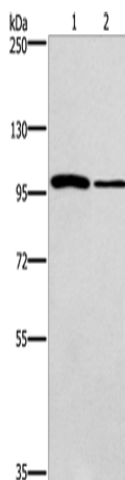


[View online »](#)

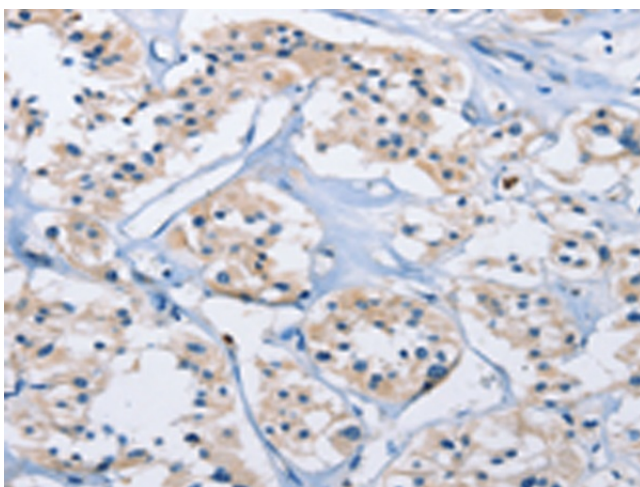
**Synonyms:** BIMP2; CARMA2; PRP; PSORS2; PSS1

**Protein Families:** Druggable Genome

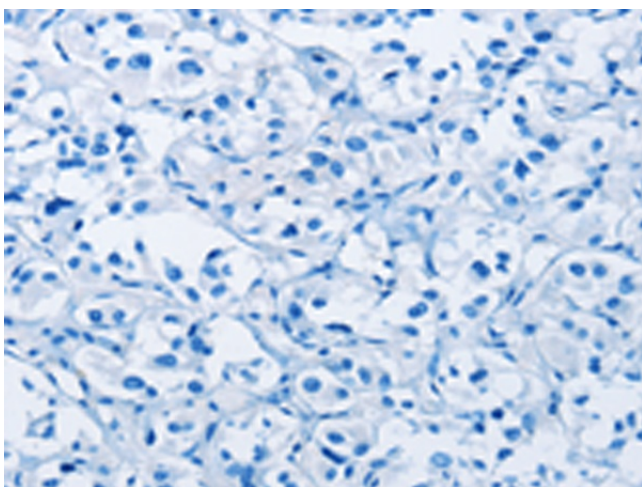
**Product images:**



Gel: 6%SDS-PAGE  
Lysate: 40  $\mu$ g  
Lane 1-2: NIH/3T3 cells  
A172 cells  
Primary antibody: [TA349746] (CARD14 Antibody)  
at dilution 1/800  
Secondary antibody: Goat anti rabbit IgG at  
1/8000 dilution  
Exposure time: 10 minutes



Immunohistochemistry of paraffin-embedded  
Human thyroid cancer tissue using [TA349746]  
(CARD14 Antibody) at dilution 1/30 (Original  
magnification:  $\times$ 200)



Immunohistochemistry of paraffin-embedded Human thyroid cancer tissue using [TA349746] (CARD14 Antibody) at dilution 1/30, treated with fusion protein. (Original magnification: ×200)