

## Product datasheet for **TA349745S**

### CARD9 Rabbit Polyclonal Antibody

#### Product data:

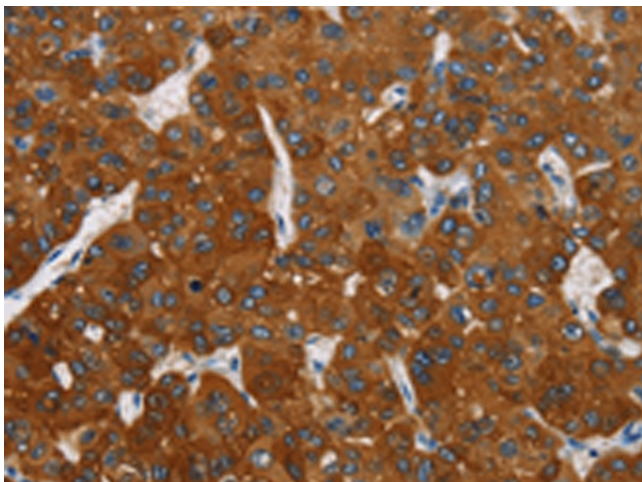
Product Type:	Primary Antibodies
Applications:	IHC
Recommended Dilution:	IHC: 100-300 Positive control: Human liver cancer Predicted cell location: Cytoplasm
Reactivity:	Human
Host:	Rabbit
Isotype:	IgG
Clonality:	Polyclonal
Immunogen:	Fusion protein of human CARD9
Formulation:	pH7.4 PBS, 0.05% NaN <sub>3</sub> , 40% GlycerolIn
Purification:	Antigen affinity purification
Conjugation:	Unconjugated
Storage:	Store at -20°C as received.
Stability:	Stable for 12 months from date of receipt.
Gene Name:	caspase recruitment domain family member 9
Database Link:	<a href="#">NP_434700</a> <a href="#">Entrez Gene 64170 Human</a> <a href="#">Q9H257</a>

**Background:** The protein encoded by this gene is a member of the CARD protein family, which is defined by the presence of a characteristic caspase-associated recruitment domain (CARD). CARD is a protein interaction domain known to participate in activation or suppression of CARD containing members of the caspase family, and thus plays an important regulatory role in cell apoptosis. This protein was identified by its selective association with the CARD domain of BCL10, a positive regulator of apoptosis and NF-kappaB activation, and is thought to function as a molecular scaffold for the assembly of a BCL10 signaling complex that activates NF-kappaB. Several alternatively spliced transcript variants have been observed, but their full-length nature is not clearly defined.

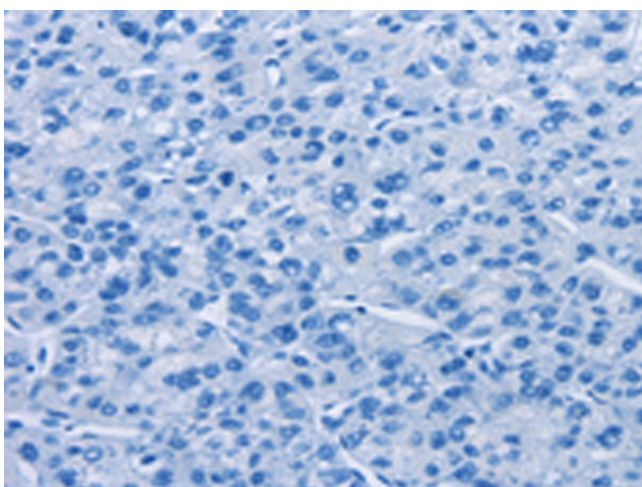


[View online »](#)

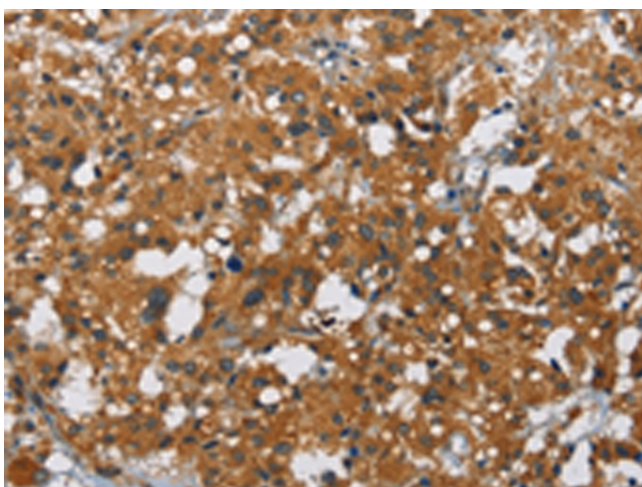
Synonyms: CANDF2; hCARD9  
Protein Families: Druggable Genome  
Protein Pathways: NOD-like receptor signaling pathway

**Product images:**

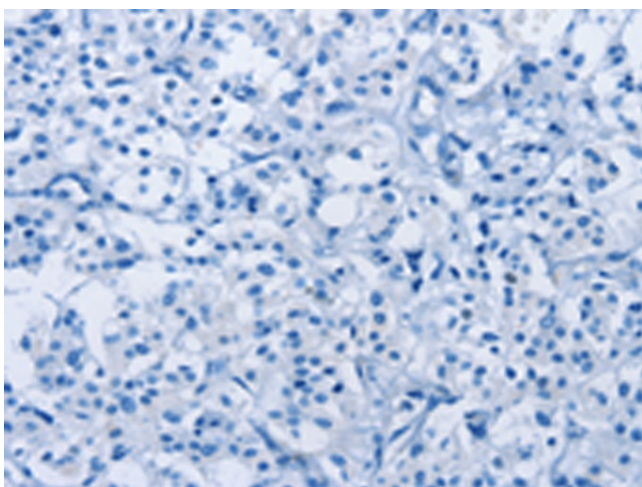
Immunohistochemistry of paraffin-embedded Human liver cancer tissue using [TA349745] (CARD9 Antibody) at dilution 1/70 (Original magnification:  $\times 200$ )



Immunohistochemistry of paraffin-embedded Human liver cancer tissue using [TA349745] (CARD9 Antibody) at dilution 1/70, treated with fusion protein. (Original magnification:  $\times 200$ )



Immunohistochemistry of paraffin-embedded Human thyroid cancer tissue using [TA349745] (CARD9 Antibody) at dilution 1/70 (Original magnification:  $\times 200$ )



Immunohistochemistry of paraffin-embedded Human thyroid cancer tissue using [TA349745] (CARD9 Antibody) at dilution 1/70, treated with fusion protein. (Original magnification:  $\times 200$ )